

PUBLIC ONLINE AUCTION

HAMPTON LUMBER COMPANY - BANKS



Sawmill, Planer Mill & Rolling Stock - Closing Location

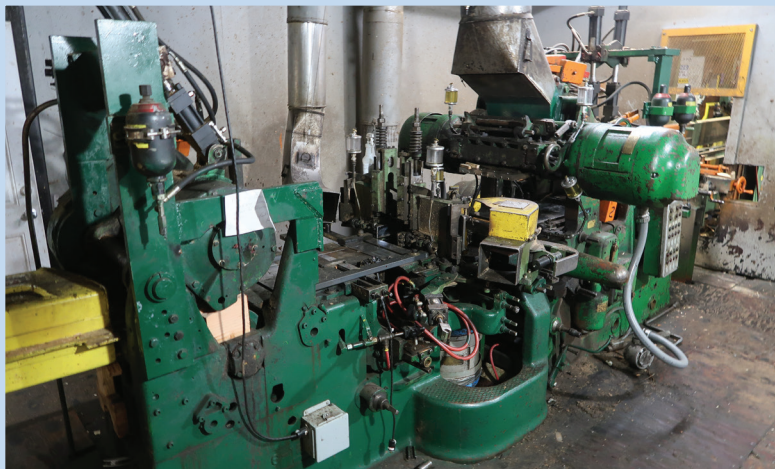
Start Date: 10:00 AM | Wednesday - May 29

End Date: 10:00 AM | Wednesday - June 5



Preview: 8:00 AM to 4:00 PM | Tuesday, June 4 & Available By Appointment

Location: 13620 NW Commerce Street, Banks, OR 97106



**STETSON ROSS 6-12MA-1
PLANER MATCHER**



**SALEM BRUNETTE MARK II
35" 5-ARM RING DEBARKER**



**MONARCH
6' RH VERTICAL HEADRIG BANDMILL**



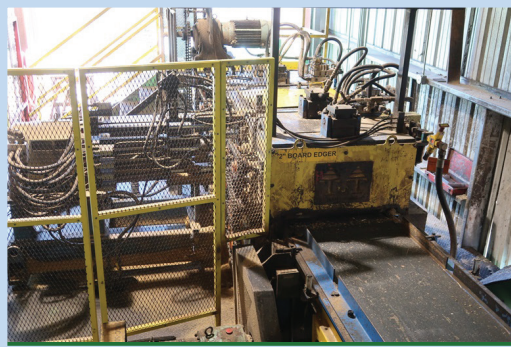
**2006 NELSON BROS
SURROUND SCAN SCANNER OPTIMIZER**



**KOCKUMS CANCAR
6' TWIN HORIZONTAL RESAW**



**2017 LUCIDYNE MARK 5
GRADE MARK READER CAMERA & LIGHTING**



**2004 TMT
2"X42" 5-SAW LINEAR EDGER**



1995 WAGNER L490S LUMBER JACK



FULL PREVIEW AT MURPHYAUCTION.COM



1.800.426.3008 - 425.486.1246 - MURPHYAUCTION.COM

PUBLIC ONLINE AUCTION - BANKS, OR

BARKER - CUT OFF SAW

SALEM BRUNETTE MARK II 35" 5-ARM RING DEBARKER W/EXTENSIVE REBUILD IN MARCH 2022, AIR SEAL, AUTO CENTERING DISC TYPE INFEED, 200 HP RING DRIVE, WEG 50 HP/1,180 RPM FEED DRIVE, IN & OUTFEED HOLD DOWNS, APPROX. 30' DISC TYPE INFEED W/(8) STOP GATES, OUTFEED ROLLS, CONTROLS & ELECTRICS, 30 HP, 10 HP & 5 HP HYDRAULIC UNITS, SPARE PARTS (REBUILD LIST AVAILABLE UPON REQUEST), S/N: 4551
6' BAR TYPE WHOLE LOG CUT OFF SAW W/35 HP MOTOR & HYDRAULIC UNIT, SPARE BARS & CHAIN

LOG DECKS - LOG HAULS

APPROX. 25' 9-STRAND H124 CHAIN SPLIT INFEED LOG DECK, S-DRIVES, SKK APPROX. 20 HP/15 RPM DOUBLE REDUCTION GEARHEAD MOTOR
APPROX. 24' 6-STRAND H124 CHAIN RE-ENTRY LOG DECK, S-DRIVE, MOTOR TO REDUCER DRIVE
APPROX. 36' 4-STRAND H124 CHAIN LOG TRANSFER DECK, S-DRIVE, SKK DOUBLE REDUCTION GEARHEAD MOTOR
APPROX. 18' 4-STRAND H78 LOG TRANSFER DECK
W/APPROX. 9' 4-STRAND LOG TRANSFER DECK W/SKK GEARHEAD MOTOR
APPROX. 50' 6"X12" HD W/FLITES CHAIN INFEED LOG HAUL TO DEBARKER, NEW CHAIN, SPROCKETS, UHMW, OREGON BEND, PLATE (COMPLETELY REBUILT)

HEADRIG - LOG TURNER

MONARCH 6' RH VERTICAL HEADRIG BANDMILL W/MILL AIR STRAIN, 150 HP/1,200 RPM MOTOR, APPROX. 45"X24' OUTFEED ROLLCASE W/8' 5-STRAND JUMP TRANSFER, CONTROLS, ELECTRICS, SPARE PARTS & SAWS (NEW WHEELS IN 2021, REBUILD LIST AVAILABLE UPON REQUEST), S/N: 53801
HYDRAULIC OPERATED LOG TURNER W/5-ARM LS&L & 5-ARM LOG KICKER

CARRIAGE - CARRIAGE DRIVE - SCANNING

2002 SALEM APPROX. 42"X20' 3-KNEE TEMPOSONIC POSITIONED CARRIAGE W/(6) BOARD DOGS, (3) LOG FLIPPERS, PANTOGRAPH, 9"X18' CONTROL CAB, CONTROLS, ELECTRICS, INOVEC 30 HP HYDRAULIC UNIT, SPARE PARTS (NEW WHEELS & RAIL INSTALLED IN SEPTEMBER 2023, REBUILD LIST AVAILABLE UPON REQUEST), S/N: 20446-06
IES 300 HP DC CARRIAGE DRIVE W/300 HP/1,150-2,000 RPM/500V DC MOTOR TO FALK 465A2-5 30 HP RATED REDUCER, 1,170 RPM INFEED, 98 RPM OUTFEED, BUMPERS, IES SAFTRONICS KDC 12-1250-4 DC CARRIAGE DRIVE W/PARKER INTEGRATOR 590+ SERIES 2 DIGITAL 300 HP DRIVE, 440 KVA ISOLATION TRANSFORMER, SPARE 300 HP DC MOTOR
2006 NELSON BROS SURROUND SCAN SCANNER OPTIMIZER W/(24) JOE SCAN JS20D1 SCAN HEADS & SUPPORT EQUIPMENT

RESAWS

KOCKUMS CANCAR 6' TWIN HORIZONTAL RESAW AIR STRAIN, (2) 250 HP/1,180 RPM SAW MOTORS, TOP FEED THRU CHAINS & PRESS ROLLS, CHROMED KNURLED & SMOOTH IN & OUTFEED ROLLCASES, 30 HP & 7-1/2 HP HYDRAULIC UNITS W/USNR LUBER, CONTROLS, ELECTRICS, SPARE PARTS & SAWS
USNR/LETSON & BURPEE OHW-AS5 5' TWIN HORIZONTAL RESAW AIR STRAIN, (2) 150 HP/1,200 RPM SAW MOTORS, TOP FEED THRU CHAINS & PRESS ROLLS, CHROMED KNURLED & SMOOTH IN & OUTFEED ROLLCASES, 50 HP & 30 HP HYDRAULIC UNITS W/USNR LUBER, CONTROLS, ELECTRICS, SPARE PARTS & SAWS (NEW WHEELS & STRAIN IN 2019, REBUILD LIST AVAILABLE UPON REQUEST)

EDGERS - SCANNING

BORING MACHINE WORKS 6"X48" GANG EDGER W/RETECH #3 SPLINED ARBOR W/SPARE ARBOR (CONVERTED FROM 4"), RELIANCE 400 HP/1,800 RPM/460V/505US FRAME MOTOR, SKK 10 HP/45 RPM FEED DRIVE MOTOR ON CHROMED FEED ROLLS, PRESS ROLLS, APPROX. 20' 4-ROLL TEMPOSONIC POSITIONED FEED TABLE W/SHARP CHAIN, INFEED TRANSFER W/BOARD HOOKS, (2) APPROX. 42"X11' OUTFEED BELTS, 50 HP & 3 HP HYDRAULIC UNITS W/SCHURMAN LUBER (REBUILD/INSTALLATION LIST AVAILABLE UPON REQUEST)
SCANNING STATION W/(6) JOE SCAN JS20DL SCAN HEADS
APPROX. 30"X46' SCAN BELT W/(2) JOE SCAN JSDL SCAN HEADS & SKK DRIVE

2004 TMT 2"X42" 5-SAW LINEAR EDGER W/#4 SPLINED ARBOR, (5) 19" TEMPOSONIC POSITIONED SAWS, BALDOR/RELIANCE 250 HP/3,565 RPM/460V/445TS FRAME MOTOR, SKK FEED DRIVE ON CHROMED & KNURLED FEED ROLLS, PRESS ROLLS, OUTFEED ROLLCASE W/BOARD PICKER, 60 HP HYDRAULIC UNIT, CONTROLS, ELECTRICS & SPARE PARTS

TRIMMERS - SCANNING

2001 PHL 20' LH SAWMILL TRIMMER W/2-STAGE FENCE, (11) 18" INDIVIDUALLY MOTORIZED SAWS W/ZERO SAW, APPROX. 9' 11-STRAND 81X LUGGED FEEL THRU TRANSFER, 4' 8-ARM SMART TIPPLE, 25' 9-STRAND 81X LUGGED OUTFEED TRANSFER W/(9) 15' EVEN END ROLLS, 10 HP HYDRAULIC UNIT, CONTROLS, ELECTRICS, SPARE PARTS & SAWS
2020 RAPTOR FX85 INTEGRATION 20' LH SAWMILL TRIMMER OPTIMIZER W/WEBSORT SYSTEM & CONTROL LOGIX UPGRADE, LMI CHROMA SCAN SENSOR HUB, (22) RAPTOR LMI GOCATOR G230 SENSORS
BAXLEY 20' RH HIGH SPEED PLANER TRIMMER W/CUT-N-TWO, SWING GATE FENCE, (22) 18" INDIVIDUALLY MOTORIZED SAWS, APPROX. 18' 11-STRAND FEED THRU TRANSFER W/(9) EVEN END ROLLS & (1) PRESS ROLL, 6'X20' LENGTH, 4" & 6" WIDTH & 2" THICKNESS CAPACITIES, CONTROLS, ELECTRICS, SPARE PARTS & SAWS
PLC 20' PLANER LUG LOADER W/(6) FEED THRU CHAINS, (10) CARRY OVER WHEELS & BOARD HOOKS
2017 LUCIDYNE MARK 5 GRADE MARK READER CAMERA & LIGHTING W/20' 6-STRAND 81X GRADE STATION

SORTERS & STACKERS - BANDER

NEWNES 20' 38-BIN J-BAR SORTER W/4' BINS, BALDOR 75 HP MOTOR TO FALK SQUARE BOX REDUCER, ALLEN BRADLEY 200 HP DRIVE, APPROX. 14' 81X LUGGED INFEED TRANSFER W/(9) 10' EVEN END ROLLS TO 6-STRAND 90-DEGREE CORNER W/DUAL STATION GRADE MARKER, (2) 4' 6-STRAND 81X TRANSFERS, 6-STRAND 81X INCLINE TRANSFER TO 6-STRAND SPEED UP TRANSFER, (4) 40' 5-STRAND 81X TAKE AWAY TRANSFERS, S-DRIVE W/SKK GEARHEAD MOTORS, 15 HP HYDRAULIC UNIT, APPROX. 28'H X 40'W X 260'L ALL STEEL CLEAR SPAN BUILDING (BUILDING SOLD SEPARATELY)
LSI 20' RH MECHANICAL PLANER STACKER W/60" 5-ARM LOWERING HOIST, (5) LUMBER DEALING ARMS, APPROX. 20' 2-SECTION 5-STRAND 81X INFEED TRANSFER, APPROX. 10' 10-STRAND UNSCRAMBLER, APPROX. 72"X50' OUTFEED ROLLCASE, ALL DRIVES, CONTROLS & ELECTRICS
SIGNODE MHT-MP44 PLASTIC BANDING STATION, TOP, BOTTOM & SIDE SQUEEZE, EVEN END BUMPERS, STICKER MAGAZINE, APPROX. 60"X24' INFEED ROLLCASE W/APPROX. 25' 4-STRAND H78 INFEED JUMP TRANSFER W/SKK GEARHEAD MOTOR, APPROX. 9' 2-STRAND 81X OUTFEED PACKAGE TRANSFER TO APPROX. 25' 2-STRAND 81X PACKAGE TRANSFER W/(3) 15' JUMP ROLLS, SKK GEARHEAD MOTOR, (2) APPROX. 20' 3-STRAND OUTFEED PACKAGE TRANSFERS W/(2) SKK GEARHEAD MOTOR, 50 HP & 10 HP HYDRAULIC UNITS, CONTROLS, ELECTRICS & (3) SPARE HEADS, S/N: Z-754
20' RH 5-TRAY SAWMILL SORTER, 7-TRAY 81X CHAIN W/SKK 5 HP/45 RPM DRIVE, APPROX. 30' 9-STRAND 81X INCLINE & DECLINE TRANSFERS, CONTROLS & ELECTRICS
LSI 20' RH MECHANICAL SAWMILL STACKER W/60" 6-ARM LOWERING HOIST, (7) LUMBER PLACING ARMS, APPROX. 20' 2-SECTION 5-STRAND INFEED TRANSFER, APPROX. 60"X50' OUTFEED ROLLCASE W/APPROX. 20' 5-STRAND H78 JUMP TRANSFER, (2) SKK GEARHEAD MOTORS

HOG & CHIPPERS

2021 ALLIANCE 2432 HDSS HAMMER HOG W/TOSHIBA 100 HP/1,170 RPM/230V MOTOR, 24"X32" SUPER ROTOR, (12) 28 LB. HAMMERS ON 12-PIN ROTOR, SPLIT TOP, FREE FLOW SCREEN GRATES, SPARE PARTS, S/N: 215575
PRECISION 58-15 6-KNIFE SAWMILL CHIPPER W/KEY KNIFE CONVERSION, SIDE FEED, TOP DISCHARGE, TECO 250 HP/1,785 RPM MOTOR (CHIPPER #2), SPARE PARTS, S/N: C1117
PRECISION 58-15 6-KNIFE SAWMILL CHIPPER W/KEY KNIFE CONVERSION, SIDE FEED, BOTTOM DISCHARGE, TOSHIBA 150 HP/1,165 RPM/445TZ FRAME MOTOR (CHIPPER #3), SPARE PARTS, S/N: C9238
PRECISION 58-15 6-KNIFE SAWMILL CHIPPER W/KEY KNIFE CONVERSION, SIDE FEED, BOTTOM DISCHARGE, TECO 150 HP/1,181 RPM/445T FRAME MOTOR (CHIPPER #1), SPARE PARTS, S/N: C3406

AUCTION STARTS: 10AM | MAY 29 CLOSSES: 10AM | JUNE 5



APPROX. 25' 9-STRAND H124



APPROX. 24' 6-STRAND H124



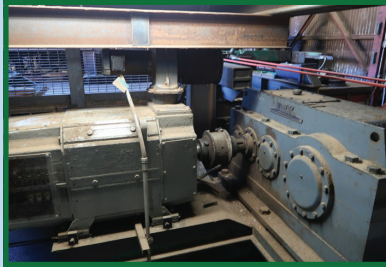
APPROX. 36' 4-STRAND H124



APPROX. 18' 4-STRAND H78



2002 SALEM



IES



USNR/LETSON & BURPEE OHW-AS5



SCANNING STATION



2001 PHL



BAXLEY



PLC



NEWNES



LSI



SIGNODE MHT-MP44



**6' BAR TYPE WHOLE LOG
CUT OFF SAW**



LSI



**2021 ALLIANCE 2432 HDSS
HAMMER HOG**



(1 OF 3)

**PRECISION 58-15
6-KNIFE SAWMILL CHIPPER**

PUBLIC ONLINE AUCTION - BANKS, OR

SCREEN - BLOWERS - FEEDERS

WSM 60HD 6'X10' 3-DECK CHIP SCREEN, SPARE SCREENS
2019 WESTERN PNEUMATICS 1024-5111 HIGH PRESSURE ROTARY LOBE BLOWER W/TECO 100 HP/1,780 RPM/404T FRAME MOTOR, S/N:A78922, UNIVERSAL SILENCER RD-10, S/N:72-417
SPARE 2021 WESTERN PNEUMATICS 1024-3111 HIGH PRESSURE ROTARY LOBE BLOWER, S/N: A50047
CLARKES ER FEEDER, 24"X30" W/MOTOR TO SHAFT MOUNTED REDUCER, S/N: 202205
APPROX. 48" PLANER BLOWER W/TOSHIBA 125 HP/885 RPM/505UZ FRAME MOTOR

CHIP BINS - SURGE BIN - SPARK DETECTION

USMW APPROX. 40-UNIT HYDRAULIC OPERATED SHAVINGS BIN (NEW GATES)
(2) APPROX. 30-UNIT HYDRAULIC OPERATED CHIP BINS, CROSS TOP AUGER (NEW GATES)
(2) APPROX. 30-UNIT HYDRAULIC OPERATED SAWDUST BINS, CROSS TOP AUGER (NEW GATES)
APPROX. 15-UNIT HYDRAULIC OPERATED BARK BIN W/15 HP HYDRAULIC UNIT (NEW DOORS)
APPROX. 9'W X 9'L X 12'H DUAL SCREW LIVE BOTTOM AUGER
CLARKES PYROGUARD CXC2 2-ZONE SPARK DETECTION SYSTEM

VIBRATORY CONVEYORS

(2) ACTION EQUIPMENT APPROX. 18"X140' VIBRATORY CONVEYORS W/4' FIBERGLASS TUB, RENS L240 METAL DETECTOR, 15' FINES DROP OUT, 445 RPM, 7/8" STROKE, CHIPPER #3 S/N:1635-1, CHIPPER #1 INFEED S/N:1802-1 (NON-BALANCED)
VIBRA PRO LS-180900FS-1/4(MS)107F VIBRATORY CONVEYOR, 5 HP/400 RPM, 7/8" STROKE (NON-BALANCED, FEEDS MILLPOWER), S/N: 2338
MILLPOWER APPROX. 18"X40' VIBRATORY CONVEYOR W/4' FIBERGLASS TUB, RENS L240 METAL DETECTOR, 15' FINES DROP OUT, CHIPPER INFEED #2. S/N: 83069
VIBRA PRO LS90600FS-3/16(MS)60F 5 HP/400 RPM, 7/8" STROKE, CHIPPER #3 AREA, S/N: 2347

COMPRESSORS - DRYERS - AIR RECEIVERS

2004 QNW 751D ROTARY SCREW COMPRESSOR W/150 HP MOTOR, AIR COOLED, ATTACHED STARTER, HOUR METER READS: 17,000, S/N: 040305
1994 QNW 751B ROTARY SCREW COMPRESSOR W/150 HP MOTOR, AIR COOLED, ATTACHED STARTER. HOUR METER READS: 78,000, S/N: 940544
1983 QNW 491A ROTARY SCREW COMPRESSOR, 100 HP MOTOR, AIR COOLED. HOUR METER READS: 41436
AIR POWER PROD. AP-2000-HBP TWIN TOWER BLOWER PURGE REGENERATIVE AIR DRYER, 2,000 CFM AT 100 PSI, S/N: AP-2000-HBP01-081
ZEKS 730HPS10B001 DUAL DESICCANT AIR DRYER, S/N: 239183
(2) BRUNNER APPROX. 4'X10' AIR RECEIVERS
MANCHESTER 400 GALLON AIR RECEIVER

FILING & GRINDING ROOMS

WRIGHT 1904-P PERIPHERY GRIND DUAL SIDE GRINDER, S/N: 121302W1904P
SIMONDS RM940 BANDSAW LEVELER, S/N: 98942347
(2) ARMSTRONG #4 RH & LH BANDSAW SHARPENERS W/DIGI CAM, SHAPE UP ARM & ACCESSORIES
ARMSTRONG #4 LH BANDSAW SHARPENER, S/N: 9075
(3) ARMSTRONG #4 BANDSAW STRETCHER ROLLS W/ANVILS & BENCHES, S/N: 12187, N/A, N/A
(1) IMW SS240 & (1) IMW 240 EDGER GUIDE DRESSERS W/MINIARK DRIVES
STETSON ROSS NO. 372 TRAVEL BED KNIFE GRINDER (PLANER MILL) ASSORTED EQUIPMENT TO INCLUDE WAAGE BABBIT POT, GUIDE PRESSES, GUIDE GRINDERS, CHAIN SHARPENERS, CHAINS, SAW & GUIDES, BARNHARDT NO. 51 GRINDER



James G. Murphy Co.
425.486.1246
Murphyauction.com



MILL ELECTRICS

SQUARE D 2,000 AMP 4-SECTION MAIN W/POWER PACT RJ 2,000 AMP BREAKER, (1) 800 AMP, (5) 600 AMP & (1) 70 AMP BREAKERS, 480/277V (PDC #2 SAWMILL)
SQUARE D 2,000 AMP 4-SECTION MAIN W/(1) 800 AMP, (4) 600 AMP, (1) 350 AMP, (2) 300 AMP, (2) 200 AMP & (1) 20 AMP BREAKERS, 480/277V (PDC #2 SAWMILL)
GE SPECTRA SERIES 2,000 AMP 2-SECTION MAIN W/(1) 800 AMP, (2) 600 AMP, (1) 400 AMP & (2) 90 AMP BREAKERS, 480/277V (CHIP SCREEN AREA)
GE AV-LINE 1,200 AMP 2-SECTION MAIN W/1,600 AMP POWER BREAKER (PLANER AREA)
(2) WESTINGHOUSE 2100 SERIES 1,200 AMP MAINS (FILING ROOM & EDGER AREA)
GE 8000 LINE 13-SECTION MCC W/(50) SWITCHES (PLANER AREA)
SQUARE D 6 8-SECTION MCC W/(43) SWITCHES (PLANER TRIMMER AREA)
SQUARE D 7-SECTION MCC W/(35) SWITCHES (SAWMILL TRIMMER AREA)
SQUARE D 6-SECTION MCC W/(35) SWITCHES (EDGER AREA)
SQUARE D 6-SECTION MCC W/(25) SWITCHES (DEBARKER AREA)
SQUARE D 5-SECTION MCC W/(18) SWITCHES (PLANER SORTER AREA)
SQUARE D 6 4-SECTION MCC W/(14) SWITCHES (PDC #2 AREA)
ALLEN BRADLEY CENTERLINE 6-SECTION MCC W/(31) SWITCHES (KOCKUMS RESAW AREA)
ALLEN BRADLEY CENTERLINE 5-SECTION MCC W/(24) SWITCHES (CHIP SCREEN AREA)
ALLEN BRADLEY CENTERLINE 5-SECTION MCC W/(16) SWITCHES (SAWMILL STACKER AREA)
ALLEN BRADLEY 2100 3-SECTION MCC W/(18) SWITCHES (L&B RESAW AREA)
ALLEN BRADLEY 2100 3-SECTION MCC W/(11) SWITCHES (PLANER STACKER AREA)
ALLEN BRADLEY 2100 2-SECTION MCC W/(11) SWITCHES (CHIPPER #2 AREA)
WESTINGHOUSE 2100 3-SECTION MCC W/(15) SWITCHES (FILING ROOM)
BENSHAW RX2E-250-480-12-KP 250 HP SOFT START (CHIPPER AREA)
SIEMENS SIKO START 3RW34 200 HP SOFT START (CHIPPER AREA)
(2) SAFTRONICS AS360 250 HP REDUCED VOLTAGE SOFT STARTS (PDC #2 AREA)
SAFTRONICS AS180 200 HP REDUCED VOLTAGE SOFT START (BARKER AREA)
SAFTRONICS AS5-180 200 HP REDUCED VOLTAGE SOFT START (PDC #2 AREA)
SAFTRONICS AS-145 100 HP REDUCED VOLTAGE SOFT START (BARKER AREA)
SAFTRONICS GP10 100 HP VECTOR AC DRIVE (BARKER AREA)
SAFTRONICS GP10 25 HP VECTOR AC DRIVE (PLANER AREA)
SAFTRONICS GP10 20 HP VECTOR AC DRIVE (EDGER AREA)
FRENIC-MEGA 75 HP VFD (SAWMILL TRIMMER AREA)
(20+/-) ASSORTED VFD DRIVES
ALLEN BRADLEY COMPACT LOGIX 1756-L18E (2) PLC'S W/(26) ASSORTED CARDS (PLANER TRIMMER AREA)
ALLEN BRADLEY LOGIX 5581E PLC W/(5) ASSORTED CARDS (SAWMILL TRIMMER AREA)
ALLEN BRADLEY LOGIX 5571 PLC W/(7) ASSORTED CARDS (SAWMILL TRIMMER AREA)
ALLEN BRADLEY LOGIX 5561 PLC W/(19) ASSORTED CARDS (EDGER AREA)
ALLEN BRADLEY LOGIX 5561 PLC W/(13) ASSORTED CARDS (PLANER AREA)
ALLEN BRADLEY LOGIX 5561 PLC W/(9) ASSORTED CARDS (BARKER AREA)
(2) ALLEN BRADLEY COMPACT LOGIX L32E PLC'S W/(10) ASSORTED CARDS (RESAW AREA & EDGER AREA)
KOYO DIRECT LOGIC 205 PLC W/(9) ASSORTED CARDS (SAWMILL STACKER AREA)
MILL ELECTRICS TO INCLUDE SPARE MOTORS TO 400 HP, SPARE STARTERS, BREAKERS, TRANSFORMERS, DISCONNECTS, WIRE REELS, LARGE WIRE & CONDUIT LOT

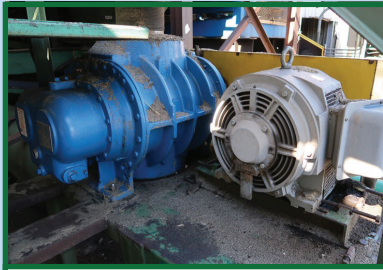
AUCTION STARTS: 10AM | MAY 29 CLOSSES: 10AM | JUNE 5



20' RH 5-TRAY SAWMILL SORTER



WSM 60HD



**2019 WESTERN PNEUMATIC
1024-5111**



**WESTERN PNEUMATIC
1024-3111**



CLARKES ER



APPROX. 48" PLANER BLOWER



USMW



(2) 30-UNIT SAWDUST BINS



MILLPOWER



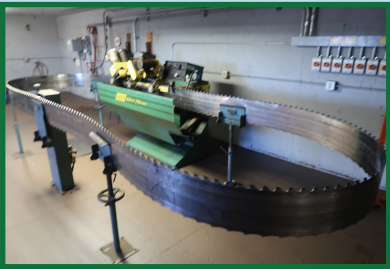
(2) ACTION EQUIPMENT



**APPROX. 9'W X 9'L X 12'H DUAL
SCREW LIVE BOTTOM AUGER**



(2) 30-UNIT CHIP BINS



WRIGHT 1904-P



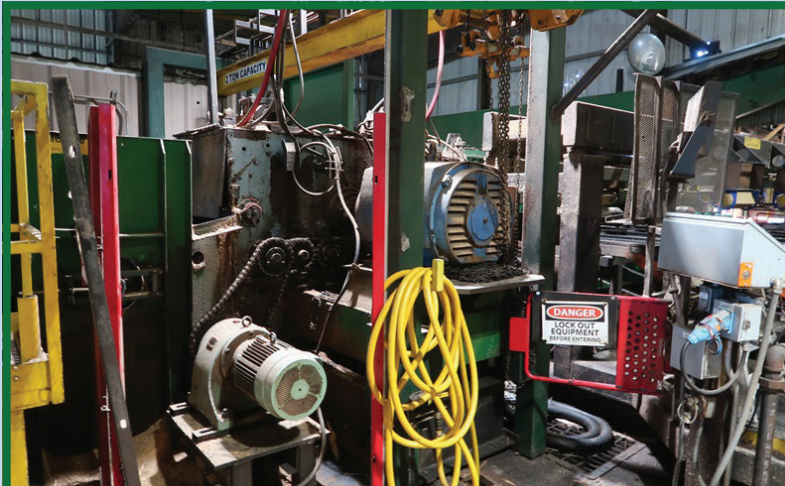
SIMONDS RM940



(3) ARMSTRONG #4



STETSON ROSS NO.372



**BORING MACHINE WORKS
6"X48" GANG EDGER**



**SQUARE D
2,000 AMP 4-SECTION MAIN**

PUBLIC ONLINE AUCTION - BANKS, OR

PLANER - TILT HOIST - ANTI STAIN

STETSON ROSS 6-12MA-1 PLANER MATCHER, 8"X15", (20) KNIVES, (6) HEADS, 100 HP TOP/50 HP BOTTOM & SIDE/25 HP SIDE, GENCO 40 HP DC FEED ROLL DRIVE W/GENSET, MURRAY/LATTA KEY KNIFE CONVERSION ON ALL HEADS, HYDRAULICS ON PRESS ROLLS, PLUNGE JOINTING RETROFIT, FRICTIONLESS JOINTER, SPARE TOP HEAD W/(6) SPARE HEADS (REBUILD LIST AVAILABLE UPON REQUEST), S/N: 4155

STETSON ROSS 505AE 20' HYDRAULIC DRIVEN TRIPLE PINEAPPLE FEED TABLE W/SPEED UP ROLL, (7) CHROMED & SPIRAL SMOOTH ROLLS W/APPROX. 7' 8-STRAND H78 JUMP TRANSFER, COBRA TECH 3RD PINEAPPLE & HYDRAULIC DRIVES

STETSON ROSS 505AE 13' HYDRAULIC DRIVEN LIVE BRIDGE W/(7) CHROMED SMOOTH ROLLS

APPROX. 12"X8' PLANER OUTFEED BELT W/DRIVE

APPROX. 42"X96" PLANER SLOW DOWN BELT W/DRIVE

APPROX. 14' 60" 4-ARM MECHANICAL TILT HOIST W/MOTOR TO REDUCER W/BRAKE DRIVE, APPROX. 20' 4-STRAND H124 CHAIN INFEED TRANSFER W/SKK DOUBLE REDUCTION GEARHEAD MOTOR

TDS IN LINE STAINLESS STEEL SPRAY TUNNEL W/BLOWER, APPROX. 8'X8-1/2'X20' CONTAINER W/TDS SCREENING STATION W/ROSENDALE FILTERS, RECYCLE TANK & PUMP, (2) 500 GALLON POLY TANKS, (3) LMI PUMPS, ARROW SPEED CONTROLS

MILL TRANSFERS - CONVEYORS - ROLLCASES

APPROX. 45' 4-STRAND 81X PULL CHAIN W/SKK DOUBLE REDUCTION GEARHEAD MOTOR, (16) LUMBER PULL CARTS, SHADE COVER

NUMEROUS LUMBER TRANSFERS TO 50'

NUMEROUS CHAIN CONVEYORS TO 150'

NUMEROUS ROLLCASES TO 50'

MILL YARD EQUIPMENT

RICE LAKE 480 LEGEND PLUS SCALE, 20,000 LB. X 5 LB., 5'X9' PLATFORM, S/N: 54381

CONVEY APPROX. 48' TRUCK UNLOADING STATION W/30 HP HYDRAULIC UNIT

CUSTOM BUILT DUAL TRUCK UNLOADING STATION

WIG WAG CHIP CAR LOADING STATION W/WINCH

(6) SETS OF ASSORTED LOG BUNKS

8'X20' CONTAINER W/ROLL UP DOOR, LIGHTS

BUILDING & CRANE

APPROX. 28'H X 40'W X 260'L ALL STEEL CLEAR SPAN SORTER BUILDING

2022 GORBEL 4,000 LB. CAP. FREE STANDING BRIDGE CRANE W/HARRINGTON 2-TON

CHAIN HOIST & PENDANT CONTROLS, APPROX. 15'W BRIDGE, APPROX. 34' TRAVEL,

APPROX 14' 6" OVERALL HEIGHT

ROLLING STOCK

1995 WAGNER L490S LUMBER JACK 4WD LOG LOADER, CUMMINS KT-19C, 450 HP ENGINE, CLARK 8000 SERIES POWER SHIFT TRANSMISSION, CLARK 8000 SERIES CONVERTER, FIRE SUPPRESSION SYSTEM, 33.5X33 & 29.5X29 TIRES (REBUILD LIST AVAILABLE UPON REQUEST). HOUR METER READS: 16937, S/N: 057131

LETOURNEAU 2592 2WD LOG STACKER, 40-TON CAP., DETROIT 60 SERIES ENGINE, NEW LEFT FRONT NC DRIVE, MAIN GENERATOR UNIT, C-9 WHEEL MOTOR & TUST MOTOR IN 2023, 33.25-35 TIRES (REBUILD LIST AVAILABLE UPON REQUEST), HOUR METER READS: 7947, S/N: 1158

2006 LINKBELT 350LXTL CRAWLER LOG LOADER, ISUZU 6HK1 ENGINE (NEW IN 2021), PIERCE HLB-2542TC60 BOOM & 60" GRAPPLE, 28" DOUBLE GROUSER TRACKS, AC CAB, REPLACED MAIN HYDRAULIC PUMP, ALL HYDRAULIC HOSES UNDER HOOD, MAIN CONTROL VALVE (REBUILD LIST AVAILABLE UPON REQUEST).

HOUR METER READS: 4,700 SINCE REBUILD, 45,835 TOTAL HOURS, S/N: K6J6-1305

1993 CAT 980F RUBBER TIRE LOG LOADER, CAT 11' GP BUCKET, CAT 3406 DIESEL ENGINE, POWER SHIFT TRANSMISSION, LOAD RIGHT PRO SCALES, 23.5-25 TIRES (REBUILD LIST AVAILABLE UPON REQUEST). HOUR METER READS: 37,432, S/N: 8CJ01041

2013 JOHN DEERE 318D SKID STEER, 6' QC BUCKET, JOHN DEERE E4024HT 63 HP TURBO CHARGED DIESEL ENGINE, REPLACED BOTH HYDRAULIC MOTORS, SEALS & CHAINS IN 2021 (REBUILD LIST AVAILABLE UPON REQUEST. HOUR METER READS: APPROX. 1,000 SINCE REBUILD, APPROX. 3,000 TOTAL HOURS, S/N: 1T0318DAEDG242420

2008 GENIE Z45/25J 4X4 5,000 LB. CAP. MANLIFT, PROPANE, 50' BOOM, 48V, HOUR METER READS: 3,943, S/N: Z452508A-37976

2002 YALE GDP110MJNP 11,000 LB. CAP. DIESEL FORKLIFT, 197" 2-STAGE MAST, FORK PLACERS, SIDE SHIFT, 60" FORKS, DUAL SOLID TIRES, S/N: C813V02308Z

2010 CHEVROLET SILVERADO 1500 4X4 QUAD CAB PICKUP, GAS, AUTO. ODOMETER READS: 203,197, S/N: 3GCRKSE38AG286953

2014 CLUB CAR XRT1550 4X4 UTV, DIESEL. HOUR METER READS: 1,891, S/N: RY1411446013



STETSON ROSS 505AE



LETOURNEAU 2592



1993 CAT 980F



2006 LINKBELT 350LXTL

AUCTION STARTS: 10AM | MAY 29 CLOSES: 10AM | JUNE 5

SHOP & STORES

NANTONG UNIVERSAL MILLING MACHINE, 1-1/2 KW HEAD, 0-4,200 RPM, 9"X42" POWERED TABLE
 (2) MILLER TRAILBLAZER 250 WELDER/GENERATORS, 250 AMP, 10,000 WATT, LINCOLN FLEXTAC 650X MULTI-PROCESS WELDER W/LF-72 FEEDER, LINCOLN FLEXTAC 500X MULTI-PROCESS WELDER,
 (3) MILLERMATIC J41 MIG WELDERS, ASSORTED WELDERS THROUGHOUT MILL, OXY/ACETYLENE SETS, VICTOR TRACK TORCH, (1) HUSQVARNA 451, (1) HUSQVARNA 362 & (5) HUSQVARNA 250 GAS CHAINSAWS, HUSQVARNA BR700 BACKPACK BLOWER, RIDGID 300 THREADER, GREENLEE 555 BENDER, MAG DRILL,
 (2) CLIMAX KEYWAY CUTTERS, GENERAC GP6500 WELDER/GENERATOR, CHAIN HOISTS & RIGGING, ELLIS 1600 BANDSAW, LARGE QUANTITY OF CORDLESS, ELECTRIC, AIR & HAND TOOLS, DRY ROD BOX, LADDERS, PRECISION TOOLS, R&M 3-TON UNDERSLUNG HOIST
 LARGE QUANTITY OF BEARINGS, CYLINDERS, SPROCKETS, COUPLERS, MILL CHAIN, HOSE, BELTS, AIR BAGS, HYDRAULIC MOTORS & PUMPS, VALVES, WIRE REELS, NUTS & BOLT **AND MUCH MORE!**



ASSORTED LOG BUNKS



NUMEROUS ROLLCASES TO 50'



2022 GORBEL



NANTONG



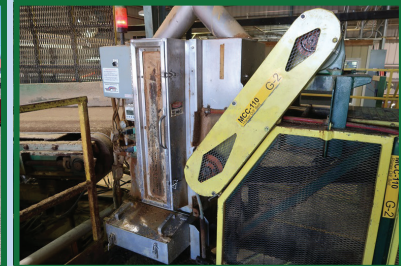
2013 JOHN DEERE 318D



MILL ELECTRICS TO IN SPARE MOTORS TO 400 HP



RICE LAKE 480 LEGEND PLUS



TDS

TERMS AND CONDITIONS

13% BUYERS PREMIUM ON ALL ITEMS

DUE TO INSURANCE AND SAFETY REASONS, CHILDREN UNDER 12 CANNOT BE ADMITTED

PAYMENT: FULL PAYMENT MUST BE MADE NO LATER THAN 5 PM, THURSDAY, JUNE 6TH. PAYMENT MUST BE MADE BY ONLINE CREDIT CARD, CASHIERS CHECK OR WIRE TRANSFER ONLY. AFTER THE AUCTION CLOSES & YOU RECEIVE YOUR EMAILED INVOICE, PLEASE REPLY AND WE WILL CHARGE YOUR CARD ON FILE.

REMOVAL: ITEMS MUST BE REMOVED NO LATER THAN 5:00 PM, FRIDAY, OCTOBER 4TH

REMOVAL HOURS: 7:00 AM TO 5:00 PM, MONDAY THROUGH FRIDAY JUNE 6TH UNTIL OCTOBER 4TH. NO WEEKEND OR HOLIDAY REMOVAL.

UPON AWARD OF BID DISMANTLERS TAKE RESPONSIBILITY FOR ANY ENVIRONMENT ISSUES THEY CREATE (E.G. SPILLED HYDRAULIC OIL). DISMANTLERS ARE REQUIRED TO PROVIDE THEIR OWN MATERIALS TO CONTAIN & CLEAN UP ANY OIL SPILLAGE.

INSURANCE: ANYONE REMOVING EQUIPMENT THAT REQUIRES RIGGING, CUTTING, DISMANTLING OR ANY ALTERATIONS TO THE PROPERTY IS REQUIRED TO PROVIDE \$5,000,000.00 DOLLAR GENERAL LIABILITY INSURANCE CERTIFICATE SHOWING THE JAMES G. MURPHY COMPANY AND HAMPTON LUMBER COMPANY AS THE ADDITIONAL INSURED PARTIES. INSURANCE CERTIFICATE AND PROOF OF WORKERS COMPENSATION COMPLIANCE MUST BE ON FILE AT SALE SITE AND WITH THE JAMES G. MURPHY CO. BEFORE DISMANTLING COMMENCES. PURCHASED LOTS ARE AT THE BUYER'S RISK. IT IS THE RESPONSIBILITY OF THE BUYER TO PROVIDE ADEQUATE PROPERTY INSURANCE COVERAGE FOR THE ITEMS PURCHASED AND BUYER'S OWN EQUIPMENT AT THE AUCTION SITE.

ALL INSURANCE POLICIES & PROOF OF WORKERS COMP POLICES WILL BE REVIEWED & APPROVED BY HAMPTON LUMBER COMPANY

- FIRE PROTECTION POLICY: NO CUTTING WITHOUT A PERMIT
- DISMANTLERS REQUIRED TO PROVIDE THEIR OWN FIRE HOSE & SPRAY NOZZLES.
- A SIGNED BURNING PERMIT ISSUED TO DISMANTLERS WILL BE DISPLAYED IN CUTTING AREA
- A LIMITED NUMBER OF BURNING PERMITS WILL BE ISSUED. ONE BURNING PERMIT PER HOSE WHILE CUTTING.
- EACH MAN USING A CUTTING TORCH WILL HAVE ONE FIREWATCH WITH A HOSE WHILE CUTTING
 - FIREWATCH TO WET DOWN BEFORE, DURING AND AFTER CUTTING.
 - FIREWATCH TO STAY IN AREA ONE HOUR AFTER CUTTING IS COMPLETED
- CUTTING HOURS ARE: 7:00 AM – 3:00 PM

WARRANTY DISCLAIMER: ALL SALES ARE FINAL. ALL ITEMS ARE BEING SOLD "AS IS, WHERE IS", WITH ALL FAULTS AND WITHOUT ANY WARRANTIES AS TO MERCHANTABILITY OF FITNESS FOR A PARTICULAR PURPOSE. THE PRINCIPAL, THE AUCTIONEER, THE ADVERTISING COORDINATOR, AND ANY OF THEIR AGENTS MAKE NO EXPRESS OR IMPLIED WARRANTIES OF ANY TYPE.

ADVERTISING DISCLAIMER: ALL INFORMATION WAS OBTAINED FROM SOURCES DEEMED RELIABLE. ALTHOUGH EVERY PRECAUTION HAS BEEN TAKEN TO ENSURE ACCURACY, THE PRINCIPAL, THE JAMES G. MURPHY CO., THE ADVERTISING COORDINATOR AND ALL THEIR AGENTS SHALL NOT BE RESPONSIBLE FOR ANY ERRORS OR OMISSIONS THEREIN. IT IS FOR THIS REASON THAT WE RECOMMEND THAT ALL ITEMS BE THOROUGHLY INSPECTED PRIOR TO THE POINT OF SALE.

ONLINE BIDS: FAILURE TO AWARD BID - ONLINE BIDDERS WILL NOT HAVE ANY CLAIM AGAINST THE JAMES G. MURPHY CO. FOR FAILURE TO SUBMIT BIDS TO THE AUCTIONEER OR ANY ERROR ON THE BIDDING PLATFORM. IN SOME INSTANCES, THE BIDDING PLATFORM MAY SHOW AN ITEM AWARDED TO AN ONLINE CUSTOMER; HOWEVER, WE RESERVE THE RIGHT TO WITHDRAW A BID AWARDED IN ERROR.

1.800.426.3008 - 425.486.1246 - murphyauction.com

PUBLIC ONLINE AUCTION



**2020 RAPTOR FX85
INTEGRATION 20' LH SAWMILL TRIMMER OPTIMIZER**



James G. Murphy Co.

Commercial & Industrial Auctioneers
P.O. Box 1127, Marysville, WA 98270

PRESORTED
FIRST CLASS MAIL
U.S. POSTAGE
PAID
SEATTLE, WA
PERMIT NO. 963

425.486.1246

murphyauction.com



James G. Murphy Co.



Commercial & Industrial Auctioneers

PUBLIC ONLINE AUCTION

HAMPTON LUMBER COMPANY - BANKS



HAMPTON
LUMBER

Start Date: 10:00 AM | Wednesday - May 29

End Date: 10:00 AM | Wednesday - June 5

Preview: 8:00 AM to 4:00 PM | Tuesday, June 4

(Preview By Appointment Available)

Location: 13620 NW Commerce Street, Banks, OR 97106

FULL PREVIEW AT MURPHYAUCTION.COM



HAMPTON
LUMBER

1.800.426.3008 - 425.486.1246 - murphyauction.com