



# PUBLIC ONLINE AUCTION

MARYSVILLE HEAVY EQUIPMENT, CONTRACTORS EQUIPMENT & VEHICLES

Start Date: 10:00 AM | Thursday - October 5

End Date: 10:00 AM | Thursday - October 12

Preview: 8:00 AM to 4:00 PM | October 10 & 11

Location: 3803 136th St. NE, Marysville, WA 98271



4,547 HRS



2020 KOMATSU WA270-8



2020 KENWORTH W900

2,288 HRS



2020 KOMATSU PC138USLC-11

1,925 HRS



2020 KOMATSU PC88MR-11



2013 DYNAPAC CA3500D



2019 OSW QUAD/A



2013 OSW QUAD/A

FULL PREVIEW AT MURPHYAUCTION.COM

# NO MINIMUMS - NO RESERVES

4,276 HRS



2016 CAT 325F LCR



2018 KOMATSU WA270-8



HITACHI



2004 HITACHI ZAXIS 330LC



2013 VOLVO L70G



2007 JOHN DEERE 624J



2007 KOMATSU PC138USLC-8



2005 KOBELCO SK135SRLC-1E



1987 JOHN DEERE 490D



5,705 HRS

2005 CAT 311CU



2007 KOBELCO SK050SR-3



2007 KOMATSU PC78MR-6



1,140 HRS

2021 KOMATSU PC55MR-5



922 HRS

2021 KOMATSU PC88MR-11



1,030 HRS

2019 KUBOTA U35-4



3,801 HRS

2002 YANMAR VIO35



1968 JOHN DEERE 570



1992 GEHL 690

# PUBLIC ONLINE AUCTION - MARYSVILLE, WA



1,944 HRS

2014 GENIE Z-34/22



2006 GENIE S-80



3,405 HRS

2007 GENIE S-80



4,000 HRS

2003 JOHN DEERE 210LE



5,804 HRS

1999 CASE 580 SL SERIES 2 4X4



4,300 HRS

1999 CAT 416C IT 4X4



1989 KOMATSU D135A-1



1984 CASE 580E



JCB 1400B 4X4



2000 JOHN DEERE 650H



3,500 HRS

2006 JOHN DEERE 310SG 4X4

**NO MINIMUMS - NO RESERVES**

**2,315 HRS**



**2004 BOBCAT T300**



**NEW HOLLAND TN75S**



**2016 BOBCAT T450**



**2003 BOBCAT T200**



**2006 JOHN DEERE CT332**



**KUBOTA B6000**



**1990 BOBCAT 753**



**2000 JOHN DEERE 240**



**2012 CANYCOM S25A**



**1995 MAROOKA MST800**



**MAROOKA MST250**

# PUBLIC ONLINE AUCTION - MARYSVILLE, WA



1990 INGERSOLL RAND SD-70D



2006 GENIE GTH-636



1996 SKY TRAK 6036



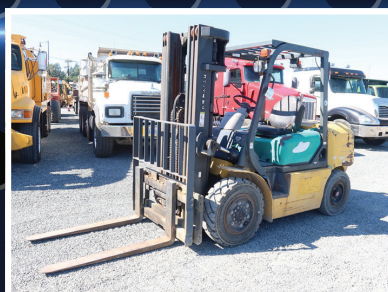
1998 SKY TRAK 6036



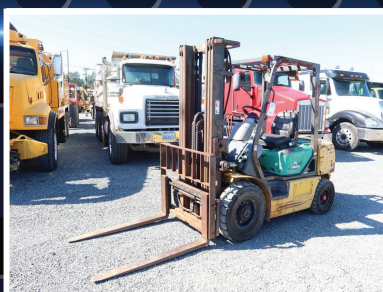
2011 JLG 8042



1984 HYSTER H225



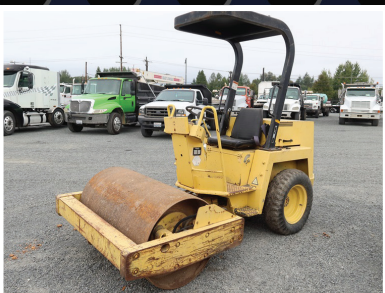
2005 KOMATSU FD40



2005 KOMATSU FD25



1970 CAT GC20



1999 BOMAG BW124D



2005 CAT CB224E



2000 CAT CB224D



1976 PETTIBONE GA225



2018 VERMEER S925TX



2023 EGN 323W



2023 EGN EG5050



1997 STUMP GRINDER

**(1 OF 2)**



**2009 INTERNATIONAL 7400**



**2007 INTERNATIONAL 7600**

**(2 OF 2)**



**2009 INTERNATIONAL 7400**



**1999 INTERNATIONAL 2600**



**2003 INTERNATIONAL 5600**



**1994 MACK RD688S**



**2004 INTERNATIONAL 4300**



**2004 INTERNATIONAL 4200**



**2004 FREIGHTLINER FL70**



**1985 INTERNATIONAL S1900**



**2002 FORD F550**



**2000 INTERNATIONAL 9900I**



**2004 KENWORTH T800**



**1993 PETERBILT 357**



**2005 FREIGHTLINER**



**2002 FREIGHTLINER**



**2007 INTERNATIONAL 8600**



**2001 INTERNATIONAL 9100**

**PUBLIC ONLINE AUCTION - MARYSVILLE, WA**



**1997 FORD LNT8000**



**2006 GMC C7500**



**2009 INTERNATIONAL 8600**



**1990 FREIGHTLINER FL120**



**2000 STERLING 7500**



**2003 INTERNATIONAL 4200**



**2003 FREIGHTLINER BUSINESS CLASS M2**



**2004 CHEV 3500**



**2003 AUTOCAR XPEDITOR**



**1997 FREIGHTLINER FLD120**



**2009 PETERBILT 320**



**2015 KENWORTH T370**



**1995 STERLING FC-70**



**1992 PETERBILT 320**



**1991 GMC TOPKICK**



**2015 CHEV 1500**



**1997 FORD**



**2008 FORD F550**



**2008 FORD F350**



**2006 CHEV 3500**



**2004 GMC 3500**



**2012 FORD F450**



**2007 FORD F550**



**1993 OTTAWA 30**



**2011 FORD E450**



**2008 FORD F350**



**2006 FORD F350**



**2004 CHEV 3500**



**2007 INTERNATIONAL 4300**





**2008 TRINITY EAGLE BRIDGE QUAD/A**



**1991 LOADKING SFL3425 T/A**



**1999 STURDYWELD**



**(1 OF 2)**

**1994 STURDYWELD**



**2000 TRAILKING TK70HT-483**



**2019 MAGNUM 2STC-40**



**1992 INTERNATIONAL 4900**



**2009 CHEV C4500**



**1992 FORD F800**



**2003 GRUMMAN NAVISTAR**



**2020 SOLITUDE BY GRAND DESIGN**



**2016 HARLEY FXSB103**



**2016 KAWASAKI ALTRIDER**



**7,530 MILES**

**2022 TOYOTA TACOMA**



**2013 HUSQVARNA 4421G**



**(1 OF 2)**

**2013 HUSQVARNA 4421G**



**2006 JOHN DEERE GATOR**



**2018 BIGFOOT**

# NO MINIMUMS - NO RESERVES



## PUBLIC ONLINE AUCTION TRANSIT BUSES & CITY OF SEATTLE



Rolling Stock

Start Date: 10AM | Wednesday - October 4

End Date: 10AM | Wednesday - October 11

Preview: 8AM to 4PM | October 9 & 10

3803 136th St. NE, Marysville, WA 98271

**GO TO MURPHYAUCTION.COM  
FOR MORE INFO**

(1 OF 2)



2015 TORO 3280-D  
GROUNDMASTER



2009 CHEV COLORADO

(1 OF 5)



2010 ALEXANDER DENNIS LIMITED



1992 GENIE



2017 FORD EXPLORER



2015 AUTO CAR

### ITEMS NOT PICTURED

- 2011 FORD F250
  - 2014 FORD F150
  - 2014 FORD ESCAPE
  - 2009 FORD ESCAPE
  - (5) 2011 NISSAN LEAF'S
- AND MUCH MORE!**

## TERMS AND CONDITIONS

3% BUYERS PREMIUM ON ALL BIDS

Due to safety issues: no pets allowed

(except service dogs as defined by the ADA)

ALL SALES ARE FINAL UPON AWARD OF ONLINE BID.

\*REMOVAL BY APPOINTMENT FOR ALL TITLED ITEMS\*

TITLED VEHICLES: Washington State residents, who are not motor vehicle dealers, must pay Washington State sales tax plus any applicable title or license fees on the purchase of titled vehicles. Out of state residents must meet all requirements to be exempt from sales tax.

(General sales tax is 10.1%, Sales tax on motor vehicles is 10.4%)

\*MILEAGE STATED IN CATALOG IS THE ODOMETER READING, THAT MILEAGE MAY NOT BE THE ACTUAL MILEAGE OF THE VEHICLE.

DOC FEE ON TITLED VEHICLES: A \$100.00 documentary service fee will be charged on each vehicle purchased. (Trucks, cars, vans, buses, motorcycles, boats & trailers). The maximum charge allowed for documentary service fee is \$200, because the selling price is determined by competitive bidding, a \$100 documentary service fee is deemed negotiated at time of bidding.

PAYMENT: Full payment must be made no later than 5:00 pm, Tuesday, October 17th.

PAYMENT MUST BE MADE BY CREDIT CARD, CASHIERS CHECK OR WIRE TRANSFER ONLY.

REMOVAL: No purchases may be removed until ALL purchases are paid for.

All items must be removed no later than 5:00 pm, Friday, October 20th.

Removal hours: 8:00 am to 5:00 pm, Monday through Friday (October 13th – October 20th), No weekend removal.

James G. Murphy Co. will, at the sole risk of the buyer, assist in loading out non-rolling stock.

**ITEMS NOT REMOVED BY DEADLINE WILL BE SUBJECT TO STORAGE CHARGES.**

WARRANTY DISCLAIMER: ALL SALES ARE FINAL. All items are being sold "As Is, Where Is", with all faults and without any warranties as to merchantability of fitness for a particular purpose. The principal, the auctioneer, the advertising coordinator, and any of their agents make no express or implied warranties of any type.

All information was obtained from sources deemed reliable. Although every precaution has been taken to ensure accuracy, the principal, the James G. Murphy Co., the advertising coordinator and all their agents shall not be responsible for any errors or omissions therein. It is for this reason that we recommend that all items be thoroughly inspected prior to the point of sale.

ONLINE BIDS: Failure to award bid: Online bidders will not have any claim against the James G. Murphy Co. for failure to submit bids to the auctioneer or any error on the bidding platform. In some instances, the bidding platform may show an item awarded to an online customer; however, we reserve the right to withdraw a bid awarded in error.

**1.800.426.3008 - 425.486.1246 - murphyauction.com**

# PUBLIC ONLINE AUCTION - MARYSVILLE, WA

## PUBLIC ONLINE AUCTION - MARYSVILLE TOOLS & EQUIPMENT

Equipment Attachments, Woodworking Equipment, Lumber, Tools & Inventory

Start Date: 10AM | Friday - October 6

End Date: 10AM | Friday - October 13

Preview: 8AM to 4PM | October 11 & 12

Location: 3803 136th St. NE, Marysville, WA 98271



**START DATE: 10:00 AM | THURSDAY - OCTOBER 5**  
**END DATE: 10:00 AM | THURSDAY - OCTOBER 12**

**1,635 HRS**



**2021 JOHN DEERE 245G LC**



**James G. Murphy Co.**  
Commercial & Industrial Auctioneers  
P.O. Box 1127, Marysville, WA 98270

PRESORTED  
FIRST CLASS MAIL  
U.S. POSTAGE  
PAID  
SEATTLE, WA  
PERMIT NO. 963

**425.486.1246**  
*murphyauction.com*



**JGM James G. Murphy Co. JGM**  
Commercial & Industrial Auctioneers  
**PUBLIC ONLINE AUCTION**

**MARYSVILLE HEAVY EQUIPMENT,  
CONTRACTORS EQUIPMENT & VEHICLES**

**Start Date: 10:00 AM | Thursday - October 5**

**End Date: 10:00 AM | Thursday - October 12**

**Preview: 8:00 AM to 4:00 PM | October 10 & 11**

**Location: 3803 136th St. NE, Marysville, WA 98271**

**FULL PREVIEW AT MURPHYAUCTION.COM**

**1.800.426.3008 - 425.486.1246 - murphyauction.com**