

NO MINIMUMS - NO RESERVES



James G. Murphy Co.



# PUBLIC AUCTION

**KENMORE HEAVY EQUIPMENT,  
CONTRACTORS EQUIPMENT & VEHICLES**

**9AM - SATURDAY - DEC 1**

PREVIEW 8-5PM, FRIDAY, NOV 30

18226 68TH AVE NE, KENMORE, WA

**LOW HOURS**



**2016 TAKEUCHI TL12R  
2016 TAKEUCHI TL12V2**



**2007 KOMATSU PC228USLC-3**



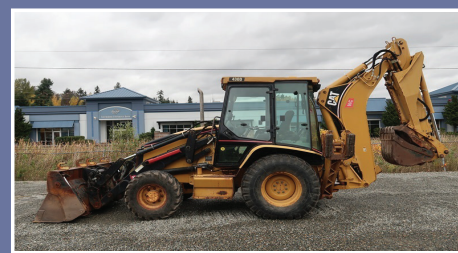
**2013 JOHN DEERE 450J LGP**



**2016 TAKEUCHI TB240**



**2016 TAKEUCHI TS80V-2**



**2003 CATERPILLAR 430D IT 4X4**

**BID LIVE OR BID ONLINE!**

1.800.426.3008 - 425.486.1246 - [MURPHYAUCTION.COM](http://MURPHYAUCTION.COM)



# NO MINIMUMS - NO RESERVES



1996 JCB 214 SERIES 2 4X4



1990 JOHN DEERE 310C



2017 TAKEUCHI TB216R



2016 TAKEUCHI TB240



2001 JOHN DEERE 5210



2013 DOOSAN DX85R-3



2015 TAKEUCHI TS70R



1998 ALLOY ATSLT-49.5-3

1.800.426.3008 - 425.486.1246 - [murphyauction.com](http://murphyauction.com)



# ***NO MINIMUMS - NO RESERVES***



**2003 FORD F550**



**2009 INT'L 4300**



**2000 MACK RD688S**



**2001 INT'L 9400**



**1989 MACK RW700**



**2005 INT'L 8600**



**2003 FORD F450**



**2002 KENWORTH T800**

**1.800.426.3008 - 425.486.1246 - [MURPHYAUCTION.COM](http://MURPHYAUCTION.COM)**



# PUBLIC AUCTION - SAT, DEC 1

**LOW HOURS**



**(2 OF 3) 2017 TAKEUCHI TB240'S**



**James G. Murphy Co.**

Commercial & Industrial Auctioneers  
P.O. Box 82160, Kenmore, WA 98028

PRESORTED  
FIRST CLASS MAIL  
U.S. POSTAGE  
**PAID**  
SEATTLE, WA  
PERMIT NO. 963



**ONLINE  
BIDDING  
AVAILABLE**

1.800.426.3008 - 425.486.1246  
[murphyauction.com](http://murphyauction.com)



LIKE US ON  
**facebook**



# James G. Murphy Co.

Commercial & Industrial Auctioneers



# PUBLIC AUCTION

**KENMORE HEAVY EQUIPMENT,  
CONTRACTORS EQUIPMENT & VEHICLES**

**9AM - SATURDAY - DEC 1**

**PREVIEW 8-5PM, FRIDAY, NOV 30**

**18226 68TH AVE NE, KENMORE, WA**

**BID LIVE OR BID ONLINE!**

**1.800.426.3008 - 425.486.1246 - [MURPHYAUCTION.COM](http://MURPHYAUCTION.COM)**



# AUCTION STARTS AT 9AM



**1996 KUBOTA R510 4WD**



**2003 WACKER RD25**



**2011 JOHN DEERE 318D**



**GENIE GS2646 26'**



**SKYJACK SJ3015 15'**



**(1 OF 3) OFFICE TRAILERS**



**PSM 62913 5X14**



**SULLIVAN D210Q**



**DIAMOND BILT SCM300-K**



**(1 OF 3) RELIANCE**

## TERMS AND CONDITIONS

NO BUYERS PREMIUM ON HEAVY EQUIPMENT & VEHICLES.  
10% BUYERS PREMIUM ON SMALL EQUIPMENT, TOOLS & MISC.  
ADDITIONAL 3% BUYERS PREMIUM ON ONLINE PROXY BIDS. 5% BUYERS PREMIUM FOR LIVE ONLINE PURCHASES. ALL SALES ARE FINAL UPON AWARD OF BID BY AUCTIONEER.

**TITLED VEHICLES:** WASHINGTON STATE RESIDENTS, WHO ARE NOT MOTOR VEHICLE DEALERS, MUST PAY WASHINGTON STATE SALES TAX PLUS ANY APPLICABLE TITLE OR LICENSE FEES ON THE PURCHASE OF TITLED VEHICLES. OUT OF STATE RESIDENTS MUST MEET ALL REQUIREMENTS TO BE EXEMPT FROM SALES TAX. (GENERAL SALES TAX IS 10%, SALES TAX ON MOTOR VEHICLES IS 10.3%)

**A \$300 CASH DEPOSIT IS REQUIRED WHEN AWARDED BID ON ALL CARS, PICKUPS & VANS.**

**AUCTIONEERS NOTE:** A \$100 VEHICLE DOCUMENTARY SERVICE FEE WILL BE CHARGED ON THE PURCHASE OF EVERY TITLED ITEM INCLUDING CARS, TRUCKS, VANS, & TRAILERS.

**PAYMENT:** FULL PAYMENT MUST BE MADE BY NO LATER THAN 5 P.M., TUESDAY, DEC 4TH. A 25% DEPOSIT IS REQUIRED BY THE CLOSE OF BUSINESS, AUCTION DAY. CASH, CASHIER'S CHECK, VISA & MASTERCARDS ONLY. PERSONAL OR COMPANY CHECKS ACCEPTED ONLY WITH BANK LETTER OF GUARANTEE.

**REMOVAL:** THERE WILL BE NO REMOVAL DURING THE AUCTION UNLESS OTHERWISE ANNOUNCED BY THE AUCTIONEER. NO PURCHASES MAY BE REMOVED UNTIL ALL PURCHASES ARE PAID FOR. ALL ITEMS MUST BE REMOVED NO LATER THAN 5:00 P.M., THURSDAY, DECEMBER 6TH.

**WARRANTY DISCLAIMER:** ALL SALES ARE FINAL. ALL ITEMS ARE BEING SOLD "AS IS, WHERE IS", WITH ALL FAULTS AND WITHOUT ANY WARRANTIES AS TO MERCHANTABILITY OF FITNESS FOR A PARTICULAR PURPOSE. COMPLETE TERMS AND CONDITIONS OF SALE WILL BE AVAILABLE AT THE TIME OF SALE.

**1.800.426.3008 - 425.486.1246 - [murphyauction.com](http://murphyauction.com)**



**ITEMS LISTED BELOW ARE NOT  
PHOTOGRAPHED IN BROCHURE**

(2) 2002 NEW HOLLAND TC33D MFWD UTILITY TRACTORS  
2005 KUBOTA BX1500D MFWD UTILITY TRACTOR  
1997 JOHN DEERE 1070 MFWD UTILITY TRACTOR  
2002 JOHN DEERE 1445 4WD 62" ROTARY FRONT MOWER  
2008 TORO 5410 AWD 5-GANG REEL MOWER  
2002 TORO 5500D 5-GANG REEL MOWER  
(2) 1998 TORO 3100 3-GANG REEL MOWER'S  
(2) JACOBSEN GREENS KING 4 3-GANG REEL MOWER'S  
TENNANT 275 POWER SWEEPER  
CAT GC15 2,700 LB 189" FORKLIFT  
2001 INT'L 4900 18' DT466E  
2004 FORD F550 4X4 DUMP TRUCK  
1997 CHEV 3500 CREW CAB DUMP TRUCK  
2003 INT'L 7400 S/A DUMP TRUCK  
2009 FORD F550 4X4 EXT CAB DUMP TRUCK  
2009 INT'L 8600 T/A TRACTOR  
2001 INT'L 9400 SLEEPER TRACTOR  
1989 MACK RW700 TRI/A TRACTOR  
1981 FORD 8000 T/A BOOM TRUCK  
2008 INT'L 4300 S/A BUCKET TRUCK  
1997 FORD F450 BUCKET TRUCK  
1981 FORD 8000 T/A BOOM TRUCK  
2006 CHEV 2500 HD EXT CAB SERVICE BODY  
2003 FORD F250 SERVICE BODY  
1991 INT'L 4900 S/A ENCLOSED SERVICE BODY  
2004 FORD F350 12' FLATBED  
1999 GMC 3500 12' FLATBED  
2000 INT'L 4900 S/A 12' FLATBED DUMP  
2003 FORD F450 12' FLATBED DUMP  
2012 CHEV 3500 HD 11' FLATBED  
2005 CHEV 3500 10' EXT CAB FLATBED  
2002 DODGE 3500 9' FLATBED DUMP  
1997 CHEV 3500 9' FLATBED  
1995 FORD F350 4X4 12' FLATBED DUMP  
1993 DODGE 250 RAM 8' FLATBED  
1997 FORD CARGO C/O SWEEPER TRUCK  
1984 INT'L S1900 S/A SEAL COAT TRUCK  
2003 FORD E350 12' VAN TRUCK  
1996 INT'L 4700 14' VAN TRUCK  
1994 FORD F350 CREW CAB  
1996 INT'L 4700 16' VAN TRUCK  
2008 WORKHORSE UTILIMASTER STEP VAN  
1997 VOLVO FE C/O MOBILE MEDIA SATELLITE  
1987 FORD E350 AID UNIT  
2002 INT'L 3400 32-PASSENGER BUS  
1998 ALLOY ATSLT-49.5-3 LIVE WALKING FLOOR TRAILER  
1994 GEM STATE 17' 6-TON T/A TILTBED  
1988 6' X 14' T/A STEEL DECK  
24' T/A BEAVERTAIL EQUIPMENT  
2005 TRAILMOBILE 53' T/A VAN TRAILER  
1993 FRUEHAUF 30' T/A VAN TRAILER  
PAROS 12' 7,000 LB GVR T/A UTILITY TRAILER  
ZIEMAN 11' T/A UTILITY TRAILER  
1993 DOOLITTLE 10' S/A ENCLOSED UTILITY TRAILER  
2002 4-1/2' X 7-1/2' S/A UTILITY TRAILER  
1997 NW BUILDING SYSTEM 10' X 42' T/A 3-ROOM OFFICE TRAILER  
1993 10' X 42' T/A 3-ROOM OFFICE TRAILER  
BLAZER IND 10' X 40' T/A 3-ROOM OFFICE TRAILER

1993 MCI PORTABLE PROPANE FIRED THERMO PLASTIC MELTER  
1993 INGERSOLL RAND P-185 C-W-JD AIR COMPRESSOR  
SULLIVAN D210Q TRAILER MOUNTED 210 CFM AIR  
BEAR CAT 72620 6" HYDRAULIC CHIPPER  
LEE BOY TRAILER MOUNTED CRACK SEALER  
SKYJACK SJ8831 31' PLATFORM LIFT  
SKYJACK SJ4626 26' PLATFORM LIFT  
SKYJACK SJ3215 15' PLATFORM LIFT  
GENIE GS4604 26' PLATFORM LIFT  
2013 FORD EXPLORER AWD  
2013 CHEV TAHOE 4X4 SUV  
2012 FORD EXPLORER AWD SUV  
2011 FORD F150 4X4 EXT CAB PICKUP  
2011 CHEV SUBURBAN 4X4 SUV  
2009 CHEV TAHOE 2WD SUV  
2008 CHEV COLORADO 4X4 EXT CAB PICKUP  
2008 FORD F250 4X4 PICKUP  
2008 FORD F250 4X4 CREW CAB PICKUP  
2007 FORD EXPEDITION XLT 4X4 SUV  
2007 CHEV COLORADO 4X4 EXT CAB PICKUP  
2007 CHEV TAHOE 4X4 SUV  
2007 DODGE 1500 RAM 4X4 CREW CAB PICKUP  
2003 FORD RANGER EXT CAB PICKUP  
2002 FORD F150 4X4 EXT CAB PICKUP  
2002 GMC YUKON 4X4 SUV  
2002 FORD EXPLORER SUV  
2001 BMW X5 AWD SUV  
(2) 2000 FORD F150 PICKUPS  
(2) 2000 FORD RANGER EXT CAB PICKUPS  
2017 TRACKER GUIDE V14 14' ALUMINUM BOAT  
2007 BAYLINER 175 17-1/2' OPEN BOW RUNABOUT BOAT  
(2) DUROBOAT 12' ALUMINUM BOATS  
2008 HONDA GOLD WING MOTORCYCLE  
2007 SUZUKI GSX-R600 MOTORCYCLE  
1997 FLEETWOOD SOUTHWIND 32' CLASS A  
RED-D-ARC GX300 300 AMP DC ARC WELDER, 9,500W  
VERMEER RT100 WALK BEHIND CHAIN TRENCHER  
WOODS BRUSHBULL 3 PT PTO DRIVEN 6" ROTARY MOWER  
DURO MAX XP10000E 10,000W 120/240V 18 HP GAS GENERATOR  
(8) HONDA EG4000CL 4,000W 120/240V GAS GENERATORS  
TORO 28" WALK BEHIND SELF-PROPELLED MOWER  
FERRIS HW36KA 36" WALK BEHIND COMMERCIAL MOWER  
TORO 28" WALK BEHIND SELF-PROPELLED MOWER  
JOHN DEERE 1200A BUNKER RAKE  
MORTON WALK BEHIND PROPANE THERMOPLASTICS APPLICATOR  
GAS POWERED CURB MACHINE  
INGERSOLL RAND 2475 7-1/2 HP 80 GAL VERTICAL AIR COMP.  
JOHN DEERE 1200A 3-WHEEL GAS BUNKER RAKE  
TORO SAND PRO 5020 3-WHEEL GAS BUNKER RAKE  
EASY KLEEN MAGNUM GOLD 4,000 PSI OIL FIRED HOT WATER  
SET OF 6' FORK EXTENSIONS  
TMG 80 3 PT PTO DRIVEN 80" ROTARY  
HEAVY DUTY TIRE CHANGER  
TMG WB24 HEAVY DUTY WHEEL BALANCER  
10' 12-DRAWER 2-DOOR METAL  
TMG GB72-GL SKIDSTEER 72" HYDRAULIC  
24" HARD CLAY/GLASS CRUSHER  
MERCURY 5004 40-TON 6' MECHANICAL PRESS, S/N: 4942-174  
**OVER (100+) VEHICLES AND TRUCKS!**  
**LARGE ASSORTMENT OF TOOLS & CONSTRUCTION EQUIPMENT**

**AND MUCH MORE!!!**

# CITY OF SEATTLE VEHICLES



Start Date: 11AM - THURSDAY - NOV 29  
End Date: 11AM - THURSDAY - DEC 6  
Preview 8am-5pm - FRIDAY - NOV 30  
18226 68th Avenue NE, Kenmore, WA 98028

**ONLINE  
AUCTION**



**BID ONLINE AT MURPHYAUCTION.COM**

**1.800.426.3008 - 425.486.1246 - murphyauction.com**