



425.486.1246 - James G. Murphy Co. - MURPHYAUCTION.COM



PUBLIC ONLINE AUCTION

MARYSVILLE HEAVY EQUIPMENT, CONTRACTORS EQUIPMENT & VEHICLES

Start Date: 10:00 AM | Thursday - December 5

End Date: 10:00 AM | Thursday - December 12

Preview: 8:00 AM to 4:00 PM | December 10 & 11

Location: 3803 136th St. NE, Marysville, WA 98271



1,725 HRS



2019 JOHN DEERE 135G

1,012 HRS



2019 JOHN DEERE 310SL



2007 MACK CV713 SUPER SOLO

6,793 HRS



2012 KOMATSU PC360LC-10

2,708 HRS



2018 JOHN DEERE 50G

536 HRS



2021 SANY STH1056A



CONCRETE BATCH PLANT

942 HRS



2018 XTREME XR1055

FULL PREVIEW AT MURPHYAUCTION.COM

1.800.426.3008 - 425.486.1246 - MURPHYAUCTION.COM

NO MINIMUMS - NO RESERVES

934 HRS



2018 BOBCAT T450

733 HRS



2019 JLG SKYTRAK 6036



2004 CAT 430D

1,728 HRS



2016 NEW HOLLAND B95C 4X4



2016 JOHN DEERE 50G



2006 CAT 305C CR

1,918 HRS



2007 NEW HOLLAND U80 4X4



2013 CAT 950K

4,290 HRS



2000 GENIE S-80

1,161 HRS



2001 JOHN DEERE 4200



2007 ARGO AVENGER



2016 JOHN DEERE 855D



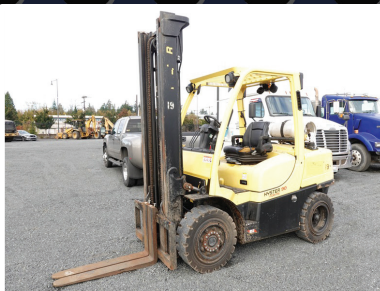
2013 JOHN DEERE 855D



YANMAR FX235D



2018 HYSTER H90FT



2017 HYSTER H90FT



2006 HYSTER H50FT



2016 XTREME XR0842

1.800.426.3008 - 425.486.1246 - murphyauction.com

PUBLIC ONLINE AUCTION - MARYSVILLE, WA

(1 OF 7)



2019 FREIGHTLINER CASCADIA

(2 OF 7)



2019 FREIGHTLINER CASCADIA

(3 OF 7)



2019 FREIGHTLINER CASCADIA

(4 OF 7)



2019 FREIGHTLINER CASCADIA



2018 FREIGHTLINER CASCADIA

(5 OF 7)



2019 FREIGHTLINER CASCADIA

(6 OF 7)



2019 FREIGHTLINER CASCADIA



2004 CHEVY C4500



2015 FREIGHTLINER CASCADIA



2011 INTERNATIONAL PROSTAR



2014 INTERNATIONAL 4300



1989 FORD L8000

(2 OF 2)



2016 INTERNATIONAL 7600



1992 GMC



2009 KALMAR 4X2



1976 FORD RODDER



2018 XTREME XR1147



2017 PETERBILT 579

1.800.426.3008 - 425.486.1246 - murphyauction.com

NO MINIMUMS - NO RESERVES



2006 CHEV 3500



1984 INTERNATIONAL S1900



2020 CHEV 3500



2009 FORD F550



2005 FORD F250



2006 FORD F550



2009 FORD F450



2015 FORD F250



2017 CHEV 5500 HD



2014 FORD F450



2013 FORD F450



2013 FORD F250



1996 FORD F450



(1 OF 2)

2006 FORD F450



2009 FORD F450



2013 FORD F550



2004 CHEV 3500



2007 CHEV 3500



2001 FORD F350



2012 INTERNATIONAL 4400



2000 GMC 2500



1990 FORD F450



1993 INTERNATIONAL 8000



2009 GMC T7500

PUBLIC ONLINE AUCTION - MARYSVILLE, WA



2016 FREIGHTLINER M2



(1 OF 3)

2017 FREIGHTLINER M2



(2 OF 3)

2017 FREIGHTLINER M2



(3 OF 3)

2017 FREIGHTLINER M2



2018 FORD F250



2005 FREIGHTLINER M2



2007 HINO



1990 KENWORTH T800



2011 IC PB40500



2010 IC PB10500



2017 TRAIL KING TKT12U



2019 SNAKE RIVER



1977 TRUCKWELD



2019 MAGNUM 2STC-40



2020 FOREST RIVER



2009 CARGO MATE



2011 MAGNUM



2019 ABU



2010 MAGNUM



BRUSH BANDIT 100



(1 OF 2)

2016 IRON EAGLE RT-50



(2 OF 2)

2016 IRON EAGLE RT-50



2022 FOREST RIVER AVENGER 268K



16,500 MILES

2014 PORSCHE 911
CARRERA 4S CABRIOLET

NO MINIMUMS - NO RESERVES



PUBLIC ONLINE AUCTION - REDTAIL LLC

Heavy Equipment & Rolling Stock

Start Date: 10AM | Tuesday - December 3

End Date: 10AM | Tuesday - December 10

Preview: 8AM to 4PM | Monday - December 9

Location: 8812 36th St. SE, Snohomish, WA 98290

Go To Murphyauction.com For More Information



2016 CAT 307E2



2017 CAT 304E2CR



2019 CAT 315FLCR



2019 CAT 313FL



2020 FORD F350 XL



2020 FORD F250 XL



2012 CAT CT660S



2014 TRAILMAX TRD-54-T

TERMS AND CONDITIONS

MARYSVILLE HEAVY EQUIPMENT: 3% BUYERS PREMIUM ON ALL BIDS

TOOLS & EQUIPMENT: 13% BUYERS PREMIUM ON ALL BIDS

UNUSED SHIPPING CONTAINERS, ATTACHMENTS & INVENTORY: 13% BUYERS PREMIUM ON ALL BIDS

CITY OF SEATTLE & OTHERS: 13% BUYERS PREMIUM ON ALL BIDS

ALL SALES ARE FINAL UPON AWARD OF ONLINE BID.

REMOVAL BY APPOINTMENT FOR ALL TITLED ITEMS

TITLED VEHICLES: Washington State residents, who are not motor vehicle dealers, must pay Washington State sales tax plus any applicable title or license fees on the purchase of titled vehicles. Out of state residents must meet all requirements to be exempt from sales tax.

(General sales tax is 9.4%, Sales tax on motor vehicles is 9.6%)

*MILEAGE STATED IN CATALOG IS THE ODOMETER READING, THAT MILEAGE MAY NOT BE THE ACTUAL MILEAGE OF THE VEHICLE.

DOC FEE ON TITLED VEHICLES: A \$150.00 documentary service fee will be charged on each vehicle purchased. (Trucks, cars, vans, buses, motorcycles, boats & trailers). The maximum charge allowed for documentary service fee is \$200, because the selling price is determined by competitive bidding, a \$150 documentary service fee is deemed negotiated at time of bidding.

PAYMENT: Full payment must be made no later than 5:00 pm, Tuesday, December 17th.

PAYMENT MUST BE MADE BY CREDIT CARD, CASHIERS CHECK OR WIRE TRANSFER ONLY.

REMOVAL: No purchases may be removed until ALL purchases are paid for.

All items must be removed no later than 4:00 pm, Tuesday, December 31st .

Removal hours: 8:00 am to 4:00 pm, Monday through Friday (December 13th - December 31st), No weekend or holiday removal.

Our facility will be closed at noon December 23rd and will reopen for regular business Thursday December 26th at 8am.

James G. Murphy Co. will, at the sole risk of the buyer, assist in loading out non-rolling stock.

ITEMS NOT REMOVED BY DEADLINE WILL BE SUBJECT TO STORAGE CHARGES.

WARRANTY DISCLAIMER: ALL SALES ARE FINAL. All items are being sold "As Is, Where Is", with all faults and without any warranties as to merchantability of fitness for a particular purpose. The principal, the auctioneer, the advertising coordinator, and any of their agents make no express or implied warranties of any type.

All information was obtained from sources deemed reliable. Although every precaution has been taken to ensure accuracy, the principal, the James G. Murphy Co., the advertising coordinator and all their agents shall not be responsible for any errors or omissions therein.

It is for this reason that we recommend that all items be thoroughly inspected prior to the point of sale.

ONLINE BIDS: Failure to award bid: Online bidders will not have any claim against the James G. Murphy Co. for failure to submit bids to the auctioneer or any error on the bidding platform. In some instances, the bidding platform may show an item awarded to an online customer; however, we reserve the right to withdraw a bid awarded in error.

PUBLIC ONLINE AUCTION

City Of Seattle - Rolling Stock

Start Date: 10AM | Wednesday - December 4

End Date: 10AM | Wednesday - December 11

Preview: 8AM to 4PM | December 9 & 10

Location: 3803 136th St. NE, Marysville, WA 98271

Go To Murphyauction.com For More Information



2015 FORD F250



2014 FORD ESCAPE



2015 HARLEY FLHP ROAD KING



2015 HARLEY FLHP ROAD KING



2009 FELLING



2009 FELLING

PUBLIC ONLINE AUCTION

Unused Shipping Containers, Attachments,
Inventory & Rolling Stock

Start Date: 11AM | Wednesday - December 4

End Date: 11AM | Wednesday - December 11

Preview: 8AM to 4PM | December 9 & 10

Location: 3803 136th St. NE, Marysville, WA 98271

Go To Murphyauction.com For More Information



PUBLIC ONLINE AUCTION

Marysville Tools & Equipment

Start Date: 10AM | Friday - December 6

End Date: 10AM | Friday - December 13

Preview: 8AM to 4PM | December 11 & 12

Location: 3803 136th St. NE, Marysville, WA 98271

Go To Murphyauction.com For More Information



GRACO THERMO LAZER
PROMELT



HURST JAWS OF LIFE R 424



HOLZHER 1438
EDGE BANDER



2011 FUJI ACTUITY
ADVANCEHS-W10



WEILER CONDOR



GALAXY CLASSIC BULL

START DATE: 10:00 AM | THURSDAY - DECEMBER 5

END DATE: 10:00 AM | THURSDAY - DECEMBER 12

(1 OF 2)



2016 INTERNATIONAL 7600



James G. Murphy Co.

Commercial & Industrial Auctioneers
P.O. Box 1127, Marysville, WA 98270

PRESORTED
FIRST CLASS MAIL
U.S. POSTAGE
PAID
SEATTLE, WA
PERMIT NO. 963

425.486.1246

murphyauction.com



James G. Murphy Co.



Commercial & Industrial Auctioneers

PUBLIC ONLINE AUCTION

**MARYSVILLE HEAVY EQUIPMENT,
CONTRACTORS EQUIPMENT & VEHICLES**

Start Date: 10:00 AM | Thursday - December 5

End Date: 10:00 AM | Thursday - December 12

Preview: 8:00 AM to 4:00 PM | December 10 & 11

3803 136th St. NE, Marysville, WA 98271

FULL PREVIEW AT MURPHYAUCTION.COM

1.800.426.3008 - 425.486.1246 - *murphyauction.com*