

J&M PUBLIC ONLINE AUCTION J&M

2500 N.E. COLUMBIA BLVD., PORTLAND, OR 97211



2007 PETERBILT 378

FULL DESCRIPTION AND MORE PHOTOS ON
THE BACK



James G. Murphy Co.

Commercial & Industrial Auctioneers
P.O. Box 82160, Kenmore, WA 98028

PRESORTED
FIRST CLASS MAIL
U.S. POSTAGE
PAID
SEATTLE, WA
PERMIT NO. 963

PUBLIC ONLINE AUCTION

CITY TOWING CO. INC & WWR TOWING - ONLINE AUCTION

Tow Truck & Support Equipment

Start Date: 11AM | Thursday - April 29

End Date: 11AM | Thursday - May 6

Preview: 8AM to 4PM | Wednesday, May 5th

2500 N.E. Columbia Blvd., Portland, OR 97211

DOWNSIZING AFTER 75 YEARS OF BUSINESS

117,782 MILES



2010 PETERBILT PB335

S/A TWIN LINE WRECKER TRUCK, PACCAR PX8, ALLISON 3000RDS-P AUTO,
DANA SPICER S23-170 REAR W/5.38 RATIO, 10,000 LB FRONT, JERR DAN
MDL280/110INT 14,000 - 28,000 LB BOOM, 8,500 - 11,000 LB UNDER LIFT,
(2) 15,000 LB WINCHES, DBL FRAME, LOCKING DIFF, ENGINE BRAKE,
33,000 GVW, S/N: 2NPLHN7X5AM101621

FOR TERMS & MORE INFORMATION GO TO MURPHYAUCTION.COM



NO MINIMUMS - NO RESERVES



1.800.426.3008 - 425.486.1246 - MURPHYAUCTION.COM



PUBLIC AUCTION - PORTLAND, OR



2007 PETERBILT 378 (PICTURE ON FRONT)

T/A TWIN LINE WRECKER TRUCK, CAT C15-466 HP TWIN TURBO, 13 SPD, 46,000 REARS, 11,000 FRONT, 2016 JERR DAN HDL500/280 BOOM, 14,000 - 28,000 UNDER LIFT, (2) 25,000 LB WINCHES, AIR SUSPENSION, ODOMETER READS: 679,085, S/N: 1NPFLBEX47N738747



2011 KENWORTH T270

S/A ROLLBACK TRUCK, PACCAR PX6-300, ALLISON 2500RDS AUTO, DANA SPICER P20060S REAR W/4.33 RATIO, JERR DAN 22SRR6N 22' STEEL DECK W/ REMOVABLE SIDES, RAMSEY HD234 WINCH, WHEEL LIFT, AIR BRAKES, REMOTE, ODOMETER READS: 203,397, S/N: 2NKHMH6X4BM289881



1992 MACK CH613

T/A TRUCK TRACTOR, 12.0 L, FULLER 10 SPD, SPRING SUSPENSION, DROP AXLE, WET KIT, ODOMETER READS: 99,384, S/N: 1M2AA14C2NW015823

FOR MORE INFORMATION AND ONLINE BIDDING VISIT
James G. Murphy Co.
murphyauction.com
425.486.1246



1996 FORD L9000

S/A TRUCK TRACTOR, CUMMINS L10, 10 SPD, SPRING SUSPENSION, 22,000 REAR, 12,000 FRT, ODOMETER READS: 660,345, S/N: 1FTYS95V0TVA06975

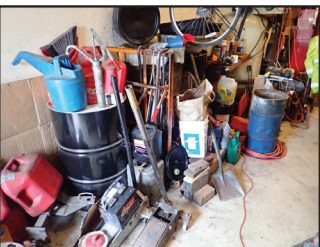
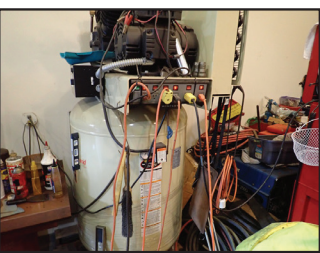


FOLLOW US ON



1977 INTERNATIONAL TRANSTAR 4300

T/A WRECKER, CUMMINS NTC 350, FULLER/ROAD RANGER 9513, SLEEPER KEMP RESCUER HOLMES 750, KEMP HYDRAULIC CONVERSION, S/N: D2137GBA10624



AUCTION TO ALSO INCLUDE:

CAT V80E 8,000 LB HRT FORKLIFT, 6 CYL LPG, 2 STAGE MAST
2005 BOMBARDIER RALLY 200 QUAD, S/N: RFLAK17115A003038
ASSORTED TOOLS & EQUIPMENT....AND MUCH MORE!

CHECK MURPHYAUCTION.COM FOR MORE INFORMATION



BID ONLINE - MURPHYAUCTION.COM - 425.486.1246