



NO MINIMUMS - NO RESERVES



ONLINE AUCTION

DUNKIN

DB

& BUSH

START DATE: 11:00 AM | THURSDAY - DEC 13

END DATE: 11:00 AM | THURSDAY - DEC 20

PREVIEW 8:00 AM TO 4:00 PM | WEDNESDAY, DEC 19

17301 NE 70TH ST., REDMOND, WA 98052

INDUSTRIAL SANDBLASTING & PAINTING CONTRACTOR



VECTOR
616 HP ABRASIVE VACUUM



CARGOIRE DEHUMIDIFIER



**ECS T/A MOBILE FARRIS &
NON FARRIS ABRASIVE RECYCLER**



DEUTZ TCD 6.1 L6 173HP



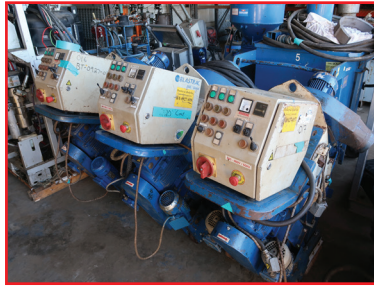
CAM INDUSTRIES 6-TON BULK BLAST POT

James G. Murphy Co.
Commercial & Industrial Auctioneers



1.800.426.3008 - 425.486.1246
murphyauction.com

NO MINIMUMS - NO RESERVES



CAM INDUSTRIES 6-TON BULK BLAST POT W/AQUAMATICS
JETSTREAM T/A 300 HP 40,000 PSI HYDROBLASTER, CAT 3306 DIESEL
VECTOR 616 HP ABRASIVE VACUUM, JOHN DEERE DIESEL,
 3,000 CFM @ 25"

(2) **CAM INDUSTRIES 6-TON BULK BLAST POTS W/AQUAMATICS**
 S/A 1,700 CFM COMPRESSED AIR AFTER COOLER
VECTOR SPARTAN 480V 2,000 CFM VACUUM, 40 HP ELECTRIC MOTOR
CAM INDUSTRIES 25-TON STEEL GRIT MACHINE
CARGOIRE 2,250 CFM DEHUMIDIFIER
 1,700 CFM ELECTRIC AFTER COOLER
CARGOIRE 750 DFM DEHUMIDIFIER
ANDRUS 1 METER BELT PRESS, EXPLOSION PROOF CONTROLS
ROGERS 1,500 CFM ROTAR SCREW COMPRESSOR
HANKISON TWIN TOWER HEATLESS REGENERATIVE AIR DRYER
 (2) **BLASTRAC 110D PORTABLE BLAST CLEANING SYSTEMS**
 (3) **BLASTRAC 350E 13" GLOBAL CLEANING SYSTEMS,**
GRACO XMPFP PASSIVE FIRE PROTECTION SPRAYER, INTUMESCENT
REACTOR EX-XP1 PLURAL COMPONENT PROPORTIONER
BLASTRAC 654 PORTABLE BLAST CLEANING SYSTEM DUST COLLECTOR
LA GRANGE PRODUCTS 2427-780 SODA BLASTER
GRACO ECOQUIP 2 VAPOR ABRASIVE BLAST MACHINE
HOLLAND INDUSTRIES DIAMATIC 500 INDUSTRIAL FLOOR GRINDER
 (20) **INDUSTRIAL GRADE PAINT SPRAYERS**
 (2) **WILDEN M15 DIAPHRAGM PUMPS**
 (2) **WILDEN M8 DIAPHRAGM PUMPS**
DEUTZ TCD 6.1 L6 173 HP POWER UNIT UNUSED
GRACO HYDROCAT PLURAL COMPONENT PUMP
CARGOIRE 9,000 CFM DESICCANT WHEEL
PUTZMEISTER LINE PUMP
BINKS CONVENTION GUN W/WASHER AND (3) PINCH VAVLES
VON ARX SCARAFIER
VON ARX SC8E GAS AND PROPANE SCARAFIER
 (7) **BLASTRAC DUST COLLECTORS**
CLEMCO SAND BLASTING POTS 300 LB & 600 LB (3-BAG, 6-BAG)
STONEAGE GOPHER GO-UH 40K INTERNAL PIPE WASHER
STONEAGE BJU 40K INTERNAL PIPEWASHER
STONEAGE BJU 20K INTERNAL PIPEWASHER
CLEMCO INTERNAL PAINTER AND SAND BLASTER
BLASTRAC 18D 8" SHOT BLASTER
CLEMCO THERMAL HOLLOW BLASTER
WESTERN TECHNOLOGY CLASS 1 DIV 1 WORK LIGHT
GRACO FUSION PURGE GUN
 (3) **SULLAIR ELECTRIC ROTARY SCREW AIR COMPRESSORS**
SULLAIR SR-325 REFRIGERATED AIR DRYER
INGERSOLL RAND 185 S/A AIR COMPRESSOR
INGERSOLL RAND 375 S/A AIR COMPRESSOR
ATLAS COPCO 185 S/A AIR COMPRESSOR
 T/A 500 GALLON WATER TRAILER WITH 3,500 PSI PRESSURE WASHER
 T/A INLINE CLEMCO STYLE VAPOR BLASTER WITH 250 GALLON TANK

DIESEL SWEEPER WITH 5' HYDRAULIC BRUSH
JOHN DEERE GATOR UTILITY VEHICLE
INTERSTATE T/A 20' UTILITY TRAILER WITH PLURAL PUMP
ELDER 12' T/A UTILITY TRAILER
CARRY-ON T/A 16' UTILITY TRAILER
INTERSTATE LOADRUNNER 14' T/A UTILITY TRAILER
 T/A 14' FLATBED TRAILER WITH RAMPS & WINCH
 PORTABLE FUEL TANK
 INLINE STEAM HEATER
 (2) **SUPER SACK CRADLES**
GRACO MASTIC PUMP
ECS T/A MOBILE FARRIS & NON FARRIS ABRASIVE RECYCLER
REED MINERALS AFTER COOLER
 (10) **6-BAG BLAST POT CARTS**
 (2) **SODA BLASTERS**
WHITMAN GAS POWERED CEMENT MIXER
TRAIL KING TK12-1800 15,000 LB T/A EQUIPMENT TRAILER (NO DECK)
 3,000 LB FLYING FORK
 (2) **POWER CLIMBER MAN BASKETS**
 ALUMINUM PLANK BOARDS
CAT 3306 210 KW GENERATOR
 (11) **FROST FIGHTER PORTABLE HEATERS**
 (17) **SPIDER STAGING MAN BASKETS**
CAT 100 KW STAND BY GENERATOR 480V, 3116 CAT DIESEL
LANDA MVC3-3000 PRESSURE WASHER
MI-T-M CORP 3504 3,300 PSI GAS PRESSURE WASHER
BE 9,000W GENERATOR
POWERMATE 3,000 GAS GENERATOR
HONDA EB5000I INVERTER
 (2) **BRIGGS & STRATTON 5000W GENERATORS**
HONDA EB 6,500 X GENERATOR
DAYTON PRO 4,000V GENERATOR
 (2) **PREDATOR 6,500W GENERATORS**
 7,000W GENERATOR
 (2) **HONDA 13 PRESSURE WASHERS**
HONDA GX 630 PRESSURE WASHER
MI-T-M CORP 3004 PRESSURE WASHER
 (2) **MI-T-M CORP 4004 PRESSURE WASHERS**
 (3) **MI-T-M CORP 3504 PRESSURE WASHERS**
 (2) **MI-T-M CORP 5004 PRESSURE WASHERS**
MULTIQUIP TRASH PUMP
HONDA WT20X TRASH PUMP
HUSKY 125 PSI AIR COMPRESSOR
EMGLO DUAL TANK AIR COMPRESSOR
 HYDRAULIC PIPE BENDER, 16 TON
SEARS CRAFTSMAN 15.5" DRILL PRESS
CENTRAL MACHINERY DRILL PRESS, 12 SPEED 3/4" CHUCK 4" SPINDLE
 OXY/ACCT CART WITH TANK
POWERMATX HYPER THERM 45 PLASMA ARC CUTTING SYSTEM
MILLER MILLERMATIC 251 WELDER 28V 200 AMP

1.800.426.3008 - 425.486.1246 - murphyauction.com

START DATE: 11:00 AM | THURSDAY - DEC 13
END DATE: 11:00 AM | THURSDAY - DEC 20

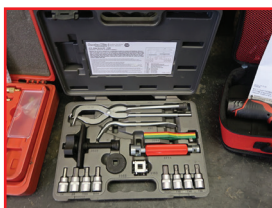


POWER PLUS TA/10/270H AC/DC WELDING GENERATOR
(2) KARCHER HP-5030D 3,000 PSI HOTBOX PRESSURE WASHERS
ROTARY 5P0A10N5G5 10,000 LB 2-POST LIFT
HEAVY DUTY GLOBAL DIESEL COMPRESSION TESTING SET
COOLING SYSTEM PRESSURE TEST KIT
DIESEL COMPRESSION TEST KIT
FUEL INJECTION TEST SET
NAPA 15 PIECE BRAKE SERVICE KIT
MILWAUKEE M12 THERMAL IMAGER
YALE 3,000 LB OVERHEAD CRANE
(6) AIR FILTRATION SYSTEMS
(3) BATTERY JUMP BOXES
(2) 40' SHIPPING CONTAINERS
(6) 20' SHIPPING CONTAINERS
ASSORTMENT OF GRACO SPRAYER TIPS
ASSORTED ECOLOGY BLOCKS

ROLLING STOCK

2009 CHEV SILVERADO PICKUP, 5.3L V8
2006 CHEV SILVERADO PICKUP, 5.3L V8
2006 CHEV TRAILBLAZER SUV, 4.2L
2006 GMC SIERRA PICKUP, 5.3L V8
2005 CHEV SILVERADO PICKUP
2006 CHEV EXPRESS VAN
2004 CHEV 2500 HD PICKUP, CREWCAB
2001 CHEV 2500 PICKUP, EXTENDED CAB, 6.0L V8, 4X4
2005 FORD F-150 PICKUP, CREW CAB, 4X4
2001 FORD F-150 PICKUP, EXTENDED CAB
FORD F800 FLATBED CRANE TRUCK, DIESEL WITH NATIONAL 556B CRANE
BOOM, 25,000 LB CRANE, 3-SECTION BOOM WITH JIB
HYSTER 15,000 LB FORKLIFT, MANUAL TRANSMISSION, 8' FORKS,
SIDE SHIFT, PROPANE
CLARK 15,000 LB PROPANE FORKLIFT, 2-STAGE MAST, 8' FORKS, SIDESHIFT

FOR MORE DETAILS AND INFO VISIT
MURPHYAUCTION.COM



BID ONLINE AT MURPHYAUCTION.COM

ADDITIONAL ITEMS LOCATED IN:
ANCHORAGE, VALDEZ & KENAI, AK.
DETAILS COMING SOON.

TERMS AND CONDITIONS

13% BUYERS PREMIUM ON ALL PURCHASES

PAYMENT: FULL PAYMENT MUST BE MADE BY 5 PM, THURSDAY, DECEMBER 20TH. CASH, CASHIERS CHECK, WIRE TRANSFER, MASTERCARD OR VISA ONLY. CHECKS ARE ACCEPTED ONLY WITH BANK LETTER OF GUARANTEE.

REMOVAL: CUSTOMERS ARE RESPONSIBLE FOR REMOVING THEIR ITEMS FROM THE AUCTION SITE. ALL ITEMS MUST BE REMOVED NO LATER THAN 4:00 PM, WEDNESDAY, JANUARY 9TH.

REMOVAL HOURS: 8:00 AM – 4:00 PM ON THE FOLLOWING DAYS:
DEC 27TH - 28TH, JAN 2ND - 4TH, JAN 7TH - 9TH
NO WEEKEND REMOVAL.

WARRANTY DISCLAIMER: ALL SALES ARE FINAL. ALL ITEMS ARE BEING SOLD "AS IS, WHERE IS," WITH ALL FAULTS AND WITHOUT ANY WARRANTIES AS TO MERCHANTABILITY OF FITNESS FOR A PARTICULAR PURPOSE. THE PRINCIPAL, THE AUCTIONEER, THE ADVERTISING COORDINATOR, AND ANY OF THEIR AGENTS MAKE NO EXPRESS OR IMPLIED WARRANTIES OF ANY TYPE.

COMPLETE TERMS AND CONDITIONS OF SALE WILL BE AVAILABLE AT THE TIME OF SALE.

1.800.426.3008 - 425.486.1246 - murphyauction.com

ONLINE AUCTION

START DATE: 11:00 AM | THURSDAY - DEC 13
END DATE: 11:00 AM | THURSDAY - DEC 20

DUNKIN & BUSH **DB** **INDUSTRIAL SANDBLASTING & PAINTING CONTRACTOR**



James G. Murphy Co.

Commercial & Industrial Auctioneers
P.O. Box 82160, Kenmore, WA 98028

PRESORTED
FIRST CLASS MAIL
U.S. POSTAGE
PAID
SEATTLE, WA
PERMIT NO. 963



MURPHYAUCTION.COM
425-486-1246

NO MINIMUMS • NO RESERVES



James G. Murphy Co.

Commercial & Industrial Auctioneers

ONLINE AUCTION

DB

DUNKIN & BUSH



VECTOR SPARTAN
480V 2000 CFM VACUUM

START DATE: 11:00 AM | THURSDAY - DEC 13
END DATE: 11:00 AM | THURSDAY - DEC 20

PREVIEW 8:00 AM TO 4:00 PM | WEDNESDAY, DEC 19

17301 NE 70TH ST., REDMOND, WA 98052

INDUSTRIAL SANDBLASTING & PAINTING CONTRACTOR

FOR MORE INFORMATION GO TO MURPHYAUCTION.COM • PHONE 425.486.1246