

ROLLING STOCK

ROLLING STOCK

2016 HYUNDAI 70L-7A 15,212 LB CAPACITY FORKLIFT, DUAL TANK PROPANE, 178" 2-STAGE MAST W/SIDE SHIFT, 52" FORKS, DUAL PNEUMATIC TIRES, HOUR METER READS: 3,140, S/N: HHKHFZ21JG0000133

2016 HYUNDAI 70L-7A 15,212 LB CAPACITY FORKLIFT, DUAL TANK PROPANE, 178" 2-STAGE MAST W/SIDE SHIFT, 52" FORKS, DUAL PNEUMATIC TIRES, HOUR METER READS: 4,740, S/N: HHKHFZ21JG0000132

HYSTER S80XM 7,550 LB CAPACITY FORKLIFT, PROPANE, 242.1" 3-STAGE MAST W/SIDE SHIFT, 48" FORKS, SOLID TIRES, HOUR METER READS: 345.6, S/N: F00V04826D

2008 DOOSAN GP25P 4,800 LB CAPACITY FORKLIFT, PROPANE, 184" 3-STAGE MAST W/SIDE SHIFT, 48" FORKS, SOLID TIRES, HOUR METER READS: N/A, S/N: ML-01065

BOBCAT 753 SKID STEER, DIESEL ENGINE, 48" GRAPPLE BUCKET & SWEEPER ATTACHMENT, HOUR METER READS: N/A, S/N: 515844920

1984 AM GENERAL M923 5-TON, 6X6 TRUCK, CUMMINS 275 HP, NHC250 DIESEL ENGINE, 5-SPEED AUTO 2-RANGE TRANSMISSION, GOODYEAR 11.00R20 TIRES, 21,600 LBS, ODOMETER READS: 27,461, S/N: NL0ECVC52303872

HYSTER S80XM-BCS 7,200 LB CAPACITY FORKLIFT, PROPANE, 174.6" 3-STAGE MAST W/SIDE SHIFT, 48" FORKS, SOLID TIRES (NOT RUNNING), HOUR METER READS: N/A, S/N: E004V03108A



TERMS AND CONDITIONS

10% BUYERS PREMIUM ON ALL ITEMS

15% BUYERS PREMIUM ON ALL ONLINE PURCHASES

Due to insurance and safety reasons, children under 12 cannot be admitted

PAYMENT: Full payment must be made by the close of business auction day. CASH, CASHIERS CHECK, WIRE TRANSFER, MASTERCARD OR VISA ONLY. Checks are accepted ONLY with Bank Letter of Guarantee.

REMOVAL: Customers are responsible for removing their items from the auction site. No purchases may be removed during the auction unless announced by the auctioneer. No purchases may be removed until all purchases are paid for. **ALL ITEMS IN THE REMAN/PLANER AREA, THE KILNS AND ROLLING STOCK MUST BE REMOVED BY 4 PM, NOVEMBER 15TH. ALL ITEMS IN THE RESAW AND GREEN CHAIN AREAS MUST BE REMOVED BY 4PM, NOVEMBER 29TH.** Removal Hours: One hour after the auction or 8:00 am – 4:00 pm. NO WEEKEND REMOVAL.

WARRANTY DISCLAIMER: ALL SALES ARE FINAL. All items are being sold "As Is, Where Is," With All Faults and without any warranties as to merchantability of fitness for a particular purpose. The principal, the auctioneer, the advertising coordinator, and any of their agents make no express or implied warranties of any type. Failure to award bid: Online bidders will not have any claim against the James G. Murphy Co. for failure to submit bids to the auctioneer or any error on the bidding platform. In some instances the bidding platform may show an item awarded to a Online customer however we reserve the right to withdraw a bid awarded in error.

Complete terms and conditions of sale will be available at the time of sale. All information was obtained from sources deemed reliable. Although every precaution has been taken to ensure accuracy, the principal, the James G. Murphy Co., the advertising coordinator, and all of their agents shall not be responsible for any errors or omissions therein. It is for this reason that we recommend that all items be thoroughly inspected prior to the point of sale. Announcements made by the auctioneer at the time of sale take precedence over printed matter. Auctioneer reserves the right to sell accessories, parts or attachments on a separate and/or aggregate basis

ABSENTEE BIDS: Absentee bids will be accepted with 25% Deposit. Absentee bids under \$100.00 are not accepted. For complete rules regarding absentee bids call our office or inquire at the auction site.

FOR MORE INFORMATION GO TO MURPHYAUCTION.COM • PHONE 425.486.1246

PUBLIC AUCTION

FRED TEBB AND SONS INC

REMAN PLANT & ROLLING STOCK - TACOMA, WA



APPROX 12' 3-ARM X 60" MECHANICAL TILT HOIST
W/GEARHEAD MOTOR TO BRAKE, APPROX 18' 3-STRAND H78
INFEEED TRANSFER W/HITACHI GEARHEAD MOTOR W/DRIVE



James G. Murphy Co.

Commercial & Industrial Auctioneers
P.O. Box 82160, Kenmore, WA 98028

PRESORTED
FIRST CLASS MAIL
U.S. POSTAGE
PAID
SEATTLE, WA
PERMIT NO. 963

NO MINIMUMS • NO RESERVES
BID LIVE OR BID ONLINE



James G. Murphy Co.

LIVE AUCTION

1906 EAST MARC ST., TACOMA, WA 98421



FRED TEBB AND SONS INC

Reman Plant

Date: 9:00 AM | Wednesday - October 9

Preview 8:00 AM to 4:00 PM | Tuesday, October 8

Location: 1906 East Marc St., Tacoma, WA 98421

Relocating to a new facility



**ONLINE
BIDDING
AVAILABLE**

REMAN PLANT & ROLLING STOCK

FOR MORE INFORMATION GO TO MURPHYAUCTION.COM • PHONE 425.486.1246

NO MINIMUMS - NO RESERVES **PUBLIC AUCTION**



FRED TEBB AND SONS INC

Reman Plant

Date: 9:00 AM | Wednesday - October 9

Preview 8:00 AM to 4:00 PM | Tuesday, October 8

Location: 1906 East Marc St., Tacoma, WA 98421

Relocating to a new facility

 **ONLINE
BIDDING
AVAILABLE**

REMAN PLANT & ROLLING STOCK



2012 AMERICAN WOOD DRYER



2001 TORIT DAY 375 RFW



2000 WEINIG UNIMAT 23E



PRESCOTT 60" RESAW



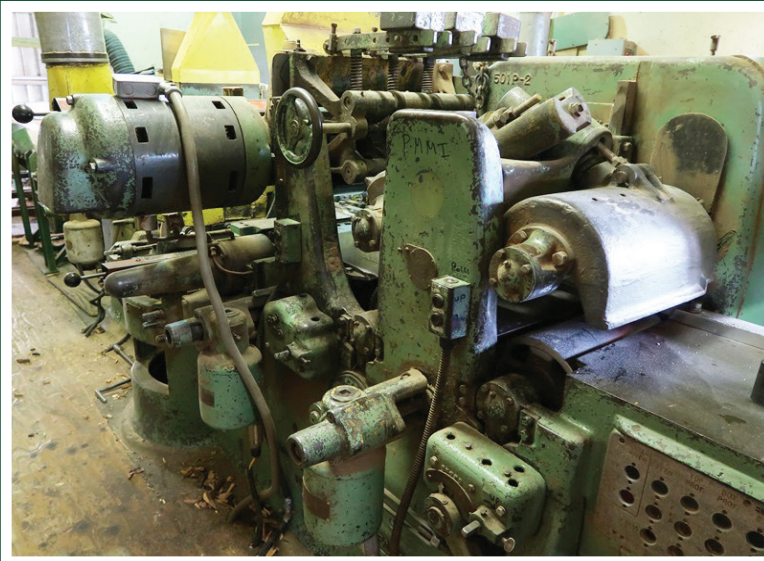
SALEM CARRIAGE

James G. Murphy Co.
Commercial & Industrial Auctioneers



1.800.426.3008 - 425.486.1246
murphyauction.com

NO MINIMUMS - NO RESERVES



HIGHLIGHTED ITEMS:

RESAWS

PRESCOTT 60" HEADRIG RESAW W/TOSHIBA 125 HP/1,175 RPM MOTOR, 1-1/4" TOP WHEEL, LUBE SYSTEM, SPARE BANDSAWS, S/N: 319-SM-3804

KLAMATH IRON WORKS 60" LH PONY RESAW W/100 HP/1,755 RPM MOTOR, ALBANY 15' DIGITRON POSITIONED LINE BAR, (2) POWERED FEED ROLLS, IN & OUTFEED ROLLS

ALBANY 60" LH PONY RESAW W/150 HP/1,755 RPM MOTOR, ALBANY 15' PAW TAW JOHN POSITIONED LINE BAR, (2) POWERED FEED ROLLS, IN & OUTFEED ROLLS

CARRIAGE

SALEM 42" 3-KNEE TEMPSONIC POSITIONED CARRIAGE W/TONG DOGS, CANT FLIPPERS, (4) TRUCKS, 80' RAILS, SERING SAWMILL 100 HP HYDRAULIC CARRIAGE DRIVE, PFS 25 HYDRAULIC UNIT, DIGITRON SETWORKS, LASER LIGHT

STACKER SYSTEM

CUSTOM BUILT HYDRAULIC DRIVEN 26' OVEREND STACKER W/7-ARM X 65" LUMBER LOWERING HOIST, (7) 60" LUMBER PLACING ARMS, (13) STICKER PLACERS, 28' 6-STRAND LUMBER TRANSFER W/3-1/2' EVEN END TRANSFER, 21' 6-STRAND, H78 OUTFEED TRANSFER W/MOTOR TO REDUCER DRIVE

HOGS-CHIPPERS

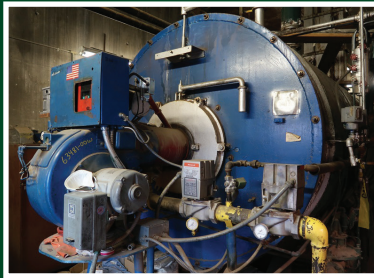
WSM BH SERIES HORIZONTAL HAMMER HOG MOD# 2420BH W/100 HP/1,785 RPM MOTOR, (20) 1-1/2" HAMMERS, APPROX 1/2" FINISH SCREEN, 21" INFEED W/3 HP CRUSH ROLL DRIVE

PRECISION 48.11 48" 6-KNIFE CHIPPER W/TECO 150 HP/1,775 RPM MOTOR, HORIZONTAL INFEED, BOTTOM DISCHARGE, SAF SS200 200 HP SOFT START, S/N: C724

BUSH 36" 4-KNIFE CHIPPER W/40 HP MOTOR, DROP FEED, TOP DISCHARGE

FOR DETAILS AND PHOTOS VISIT MURPHYAUCTION.COM

REMAN PLANT & ROLLING STOCK



BAGHOUSE-CHIP BINS-SCREEN-VIBRATORY

2001 TORIT DAY 375 RFW BAGHOUSE DUST COLLECTOR, 225,000 SCFM, (375) 10' BAGS, ROTARY PULSE SWEEP W/SPEEDAIRE 7-1/2 HP BLOWER, MOD# AM20 ROTARY AIR LOCK, APPROX 40" BLOWER W/125 HP MOTOR, APPROX 20' BLOWER W/30 HP MOTOR, APPROX 15' DIA LONG NECK CYCLONE W/ROTARY AIR LOCK, CLARKES PYROGUARD CXC-1 SPARK DETECTION SYSTEM, S/N: 1G341030-1

(2) PEERLESS 14-UNIT HYDRAULIC OPERATED CHIP BINS W/HYDRAULIC UNIT, APPROX 10' & 6' CYCLONES, QUANTITY OF LOW PRESSURE BLOWPIPE

EL-JAY 4' X 8' 2-DECK CHIP SCREEN W/TARGET BOX

WSM FSUB-12-20 20" X 12' PADDLE TYPE VIBRATORY CONVEYOR

COMPRESSOR-DRYER-AIR RECEIVERS

1990 QNW 240-D1 ROTARY SCREW AIR COMPRESSOR, 50 HP, AIR COOLED, ATTACHED STARTER, HOUR METER READS: 9,308

ROGERS MG15-60 ROTARY SCREW AIR COMPRESSOR, 60 HP, 100 PSI, HOUR METER READS: 54,490, S/N: 376

MOTIVAIR DE108 AIR DRYER

CLARKES CPB52 BOOSTER PUMP

2012 MANCHESTER 500 GALLON/165 PSIG AIR RECEIVER TANK

HANSEN 400 GALLON AIR RECEIVER, APPROX 36" X 72"

PLANER-FEED TABLE

STETSON ROSS 6-10-A1 PLANER/MATCHER, 8" X 15" 6-HEADS, 80 HP TOP, 40 HP BOTTOM, 25 HP SIDES, 25 HP TOP & BOTTOM MATCHER HEADS, 40 HP FEED ROLL DRIVE MOTOR, PLANER DOCTOR, S/N: 2682

STETSON ROSS 511E 16' SINGLE PINEAPPLE FEED TABLE W/SLOW DOWN ROLL, (7) 30" SPIRAL ROLLS, 15 HP MOTOR

TILT HOIST INFEEDS

APPROX 16' 4-ARM X 60" MECHANICAL TILT HOIST W/US 15 HP MOTOR W/BRAKE TO WESTERN REDUCER, APPROX 16' 4-STRAND 81X INFEED TRANSFER W/SKK 5 HP/45 RPM GEARHEAD MOTOR (INFEED TO CARRIAGE)

APPROX 12' 3-ARM X 60" MECHANICAL TILT HOIST W/GEARHEAD MOTOR TO BRAKE, APPROX 18' 3-STRAND H78 INFEED TRANSFER W/HITACHI GEARHEAD MOTOR W/DRIVE (INFEED TO KLAMATH RESAW #1)

APPROX 20' 5-ARM X 52" MECHANICAL TILT HOIST W/MOTOR & BRAKE TO WESTERN REDUCER, APPROX 18' 5-STRAND 81X INFEED TRANSFER W/GEARHEAD MOTOR (INFEED TO KAMATH RESAW #2)

APPROX 20' 5-ARM X 52" MECHANICAL TILT HOIST W/MOTOR & BRAKE TO WESTERN REDUCER, APPROX 525' 5-STRAND 81X INFEED TRANSFER W/MOTOR TO REDUCER DRIVE (INFEED TO STACKER)

MOULDERS & FEED TABLE

2001 WEINIG HYDROMAT 23C JOINTED 6-HEAD MOULDER, 9" X 5" MAX TIMBER SIZE, 200 FPM, 10 HP FEED MOTOR, 1ST BOTTOM HEAD 15 HP, RIGHT & LEFT SIDE HEADS 15 HP, 1ST & 2ND TOP HEADS 25 HP, 2ND BOTTOM HEAD 25 HP, S/N: 94671

2000 WEINIG UNIMAT 23E 5-HEAD MOULDER, 9-1/16" X 4-3/4" MAX TIMBER SIZE, 18-78 FPM, 5-1/2 HP FEED MOTOR, 1ST BOTTOM HEAD 10 HP, RIGHT & LEFT SIDE HEADS 20 HP, 1ST TOP HEAD 20 HP, 2ND BOTTOM HEAD 15 HP, 8' HYDRAULIC DRIVEN 2-HEAD MOULDER FEED TABLE W/ 3-1/2' 6-STRAND POLY CHAIN INFEED TBLE, 7-1/2 HP HYDRAULIC UNIT, AMERICAN 3' X 6' SCISSOR LIFT, S/N: 89147

RIP SAWS

MEREEN JOHNSON 312-DC GANG RIP SAW, 50 HP, 3-1/4" X 12" CAPACITIES, S/N: MJ4272

KUKUKAWA RP14 STRAIGHT LINE RIP SAW, 20 HP, 4" X 14" CAPACITIES, S/N: 365

PLANER/SANDER

AEM 75-52/2 TOP HEAD KNIFE PLANER/SANDER W/NEWMAN QUIET CUT HELICAL CARBIDE CUTTING HEAD, 2ND HEAD 52" TRIM BELT, MARATHON 50 HP/3,550 RPM & 50 HP/1,775 RPM DRUM DRIVES, RELIANCE/REEVES X-V VARIABLE SPEED 5 HP/6-30 RPM FEED THRU BELT DRIVE

BANDSAWS

MBD 36" AUTOMATIC PROFILE BANDSAW MOD# 3648 W/MOD# 3000CNC BANDSAWING SYSTEM, 15 HP/1,785 RPM MOTOR, S/N: 3000-89

MBD 36" AUTOMATIC PROFILE BANDSAW MOD# 3648 W/25 HP/1,765 RPM MOTOR, S/N: 3125

SIPA 600A BANDSAW, APPROX 24" THROAT, APPROX 5 HP MOTOR, 230V

TENONER/P.E.T. SAW

SCMI D802K9.1A DOUBLE END 5-HEAD TENONER, 1ST HEAD 1.5 KW, 2ND & 3RD HEADS 4.8 KW, 4TH & 5TH HEADS 9.0 KW, S/N: AA120185

CUSTOM BUILT 16' 3-SAW PRECISION END TRIMMER W/12" SAWS

FOR DETAILS AND PHOTOS VISIT MURPHYAUCTION.COM

FRED TEBB AND SONS - TACOMA, WA



CUT OFF SAW OPTIMIZER

BARR MULLIN TR726 TURBO WONDER CUT OFF SAW OPTIMIZER W/7-1/2 HP SAW, (12) 6" BOTTOM FEED ROLLS, (12) 3-1/2" HOLD DOWN ROLLS, 8" X 20' POWERED INFEED ROLLCASE, 8" X 32' OUTFEED BELT W/(5) KICKERS & SLIDE TABLE, 36" X 72" INFEED SCISSOR LIFT ON RAILS

MISC. & WOOD WORKING EQUIPMENT

MILWAUKEE 4262 1-3/4" MAG DRILL, CENTRAL 2-TON FOLDABLE SHOP CRANE, RADIAL ARM SAW, JET JJ 6" JOINTER, BRIDGEPORT 6" MACHINIST VISE, ARCAIR SLICE CUTTING SYSTEM, OXY/ACETYLENE SET, ALEMITE AIR HOSE REEL, NUMEROUS LUMBER CARTS

KILNS-BOILERS-SILOS

2012 AMERICAN WOOD DRYER STEAM FIRED SIDE LOAD KILNS, APPROX 18'H X 46'W X 46'L ALL ALUMINUM BOLT-TOGETHER, SWING GATE, CENTER COILS, (5) 60" ALUMINUM FANS W/VARIABLE PITCH & SIEMENS MECOMASTER 420 DRIVES, CONTROLS (4) APPROX 16'W X 90'L BLOCK KILNS W/ALUMINUM DOORS, 36"-72" ALUMINUM LINE SHAFT FANS W/DRIVES, KILN FIN PIPE, STEAM PIPING & RAIL, WOOD COOLING SHED (100+) SQUARE TUBE & I-BEAM 48"W X 112"L, 72" CENTER-TO-CENTER ON WHEELS
1982 RAY 250 PSI HOG FUEL BOILER, 1,500 SQ FT OF HEATING SURFACE, ASH BAGHOUSE, SUPPORT EQUIPMENT, S/N: B-8689
AMES IRON WORKS 150 PSI GAS FIRED BOILER, 1,000 SQ FT OF HEATING SURFACE, SUPPORT EQUIPMENT, S/N: 54865
APPROX 25" DIA X 65'H BOLT-TOGETHER FUEL SILO W/SWEEP & EXIT AUGERS, RELIANCE VS500 DRIVE, APPROX 24" FAN
APPROX 25" DIA X 50'H BOLT-TOGETHER FUEL SILO W/SWEEP & EXIT AUGERS

FILING & GRINDING ROOM EQUIPMENT

ARMSTRONG #2LH BANDSAW SHARPENER W/#58 CLAMP
ARMSTRONG #2RH BANDSAW SHARPENER, S/N: 2333
ARMSTRONG #4 BANDSAW STRETCHER ROLL, S/N: 2605
ARMSTRONG #4 BANDSAW STRETCHER ROLL
1991 WEINIG RONDAMAT 935 PROFILE GRINDER, S/N: 935-385
1979 WEINIG R930 PROFILE GRINDER, S/N: 849-588
HANCHETT CHALLENGER 84 TRAVELING HEAD KNIFE GRINDER, S/N: 53
THOMPSON SAW GUIDE MILLING MACHINE
SPARE BAND & CIRCULAR SAWS, SPARE MOULDER HEADS, KNIVES & PATTERNS

ELECTRICAL

SAF SS250 250 HP SOFT START, WESTINGHOUSE POW-R-LINE 1,600 AMP 2-SECTION MAIN, 480Y/277V, ALLEN BRADLEY 2100 6-SECTION MCC W/(25) SWITCHES, WESTINGHOUSE 5STAR 4-SECTION MCC W/(12) SWITCHES; MOTORS TO 150 HP, WIRE & CONDUIT LOT

GREEN CHAINS-LUMBER PULLS-TRANSFERS-CONVEYORS & ROLLCASES

APPROX 110' 5-STRAND 4" STEEL & POLY ROLL TOP GREEN CHAIN W/MOTOR TO WESTERN REDUCER, (2) APPROX 54' 5-STRAND 4" STEEL & POLY ROLL TOP GREEN CHAIN W/MOTOR TO WESTERN REDUCER, APPROX 44' 5-STRAND 4" STEEL & POLY ROLL TOP GREEN CHAIN W/MOTOR TO WESTERN REDUCER, (19) APPROX 54"W X 24'L LUMBER PULL ROLLCASES, (6) APPROX 54"W X 18'L LUMBER PULL ROLLCASES, (9) APPROX 54"W X ASSORTED LENGTH MULTIPLE LUMBER PULL ROLLCASES, NUMEROUS LUMBER TRANSFERS, CLEAN OUT CONVEYORS & ROLLCASES

FOR DETAILS AND PHOTOS VISIT MURPHYAUCTION.COM