

PUBLIC ONLINE AUCTION



KITCHEN PLUS CABINET SHOP

Woodshop

Start Date: 11AM | Wednesday - March 2

End Date: 11AM | Wednesday - March 9

Preview: 8AM to 4PM | Tuesday, March 8

11615 NE 116th St., Kirkland, WA 98034



NO MINIMUMS
NO RESERVES



2012 OMAL VELOX 1300



2005 BRANDT OPTIMAT KDN335



2001 IMA ADVANTAGE 5620



2005 BUTFERING
OPTIMAT ST0111L



BINKS



2005 FORD F550



2013 SCM PRATIX/ALUMINUM N15

CNC ROUTER, 61"X145" VACUUM TABLE, (2) BECKER VTLF-2.250 6.4 KW VACUUM PUMPS, 20-STATION ATC, HSK63F TOOLING, (12) SPINDLES, ITALWEBER 35 KVA TRANSFORMER, CONTROLS, PARTIAL CAGE, LASER CURTAINS, SERIAL NUMBER: AA1/017168



James G. Murphy Co.

murphyauction.com

425.486.1246



murphyauction.com



425.486.1246

NO MINIMUMS - NO RESERVES

CNC ROUTER:

2013 SCM PRATIX/ALUMINUM N15 CNC ROUTER, 61"X145" VACUUM TABLE, (2) BECKER VTFL-2.250 6.4 KW VACUUM PUMPS, 20-STATION ATC, HSK63F TOOLING, (12) SPINDLES, ITALWEBER 35 KVA TRANSFORMER, CONTROLS, PARTIAL CAGE, LASER CURTAINS, S/N: AA1/017168

CNC DRILL & DOWEL INSERTER:

2012 OMAL VELOX 1300 CNC DRILL & DOWEL INSERTER, BROVIND 08300DC VIBRATORY FADER, ELCO TOP 7 CONTROLS, S/N: 9793

SLIDING TABLE SAW:

SCMI SI1GW SLIDING TABLE SAW W/FENCE & ROLL CONVEYOR, S/N: AB64711

EDGE BANDERS:

2005 BRANDT OPTIMAT KDN335 EDGE BANDER, S/N: 0-261-06-3357

2001 IMA ADVANTAGE 5620 EDGE BANDER, S/N: 2217

CASE CLAMP & BOX CLAMP:

2008 LIGMATECH MPH400/08 60"X108" CASE CLAMP

RITTER R-875 36"X36" PNEUMATIC DRAWER BOX CLAMP STATION, S/N: 1551

SANDERS:

2005 BUTTERING OPTIMAT ST0111L 44" SINGLE HEAD WIDE BELT SANDER, S/N: 0411491048

RITTER R-701 5"X48" DOUBLE SIDED EDGE SANDER, S/N: 7799

SPRAY BOOTH:

BINKS 12'X12'X10' 3-SIDE SPRAY BOOTH, LIGHTS, EXHAUST FAN

POCKET HOLE MACHINE:

CASTLE TOOL TSM-20 POCKET HOLE MACHINE, PNEUMATIC CLAMP, S/N: 20905

SAWS:

SAWSTOP CB73230 10", 7.5 HP PROFESSIONAL CABINET SAW, 230 VOLT, 3 PHASE, S/N: 07258283

POWERMATIC 66 TABLE SAW W/JET JPF4 1 HP 4-ROLL POWER FEEDER, S/N: 9866916

DELTA 28-190 12" VERTICAL BANDSAW W/STAND

DOVETAILER:

CANTEK JDT75 AUTOMATIC DOVETAILER, S/N: 1703480

ROLLING STOCK:

2005 FORD F550 16' S/A BOX VAN, POWERSTROKE DIESEL, AUTO, THIEMAN LIFTGATE, S/N: 1FDAF56PX5EB41183

2003 FORD E550 20' S/A BOX VAN, DIESEL, AUTO, THIEMAN LIFTGATE, ODOMETER READS: 154,458, S/N: 1FDAC55F53HA70780

2006 FORD E250 CARGO VAN, GAS, AUTO, RACK, S/N: 1FTNS24W46HA37170

2006 FORD E250 CARGO VAN, GAS, AUTO, S/N: 1FTNS24L26DA16251

2005 FORD E250 CARGO VAN, GAS, AUTO, S/N: 1FTNS24L65HB33578

2002 FORD E250 CARGO VAN, GAS, AUTO, S/N: 1FTNS24L42HB43246

MISC. EQUIPMENT:

SOUTHWORTH 4'X8', 6,000 LB CAP. SCISSOR LIFT, TABLE, FOOT CONTROLS

SULLAIR FS8-25H/A 25 HP ROTARY SCREW AIR COMPRESSOR, HANKISON SPXF10W

AIR DRYER, 120 GALLON HORIZONTAL TANK

RITTER 13-SPINDLE SINGLE ROW LINE DRILL

AGET FT94 DUST COLLECTOR W/CYCLONE

2013 ECO SR-30 30L BOILER, 10L THERMIL, S/N: T190X20366

KREMLIN 16-120 PUMP

(2) KREMLIN REXSON PUMPS

(5) VESTIL H-150-LD FORKLIFT DUMP HOPPERS

(5) JESCO 211561 FORKLIFT DUMP HOPPERS

(3) DUMP HOPPERS

(68) 4'X8' SHEETS OF MAPLE PARTICLE BOARD

(40) 49"X97"X3/4" SHEETS OF ROSEBURG PARTICLE BOARD

ASSORTED SHEET GOOD INVENTORY

(23) SECTIONS OF PALLET RACKING

ASSORTED SHEET GOOD INVENTORY

(10) 4-SIDED DRYING CARTS

(5) SHELVING UNITS, (2) PALLET JACKS, HAND TRUCK, (5) FLAMMABLE CABINETS,

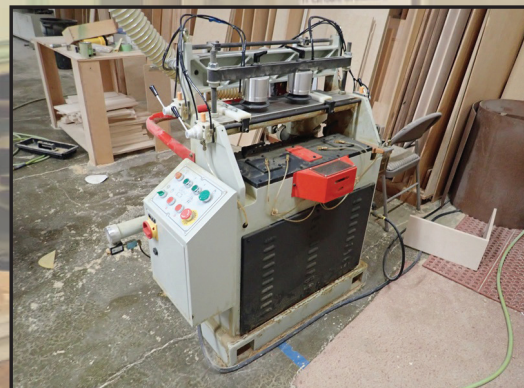
WORKBENCHES, SNAP LOCK DUCTING, ASSORTED KITCHEN DISPLAYS, DRYING RACKS, TABLES, CARTS & MISC.



SAWSTOP CB73230



SOUTHWORTH



CANTEK JDT75



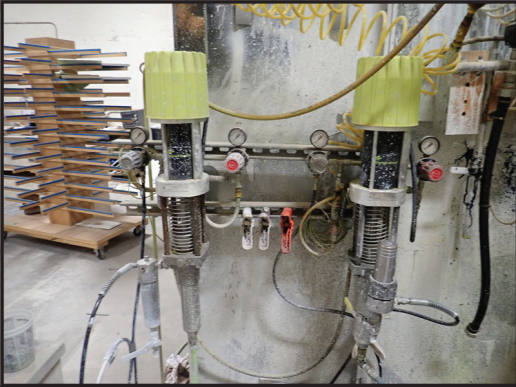
RITTER R-701



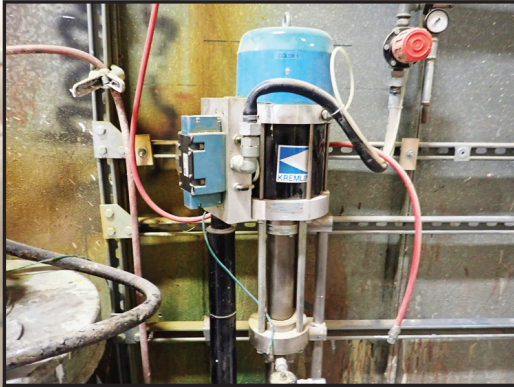
**REGISTER
TO BID @
MURPHYAUCTION.COM**



PUBLIC ONLINE AUCTION



(2) KREMLIN REXSON PUMPS



KREMLIN 16-120



(5) FLAMMABLE CABINETS



(68) 4'X8' SHEETS OF
MAPLE PARTICLE BOARD



(40) 49''X97''X3/4'' SHEETS OF
ROSEBURG PARTICLE BOARD



(5) JESCO 211561



2003 FORD E550



2005 FORD E250



SNAP LOCK DUCTING



2006 FORD E250

TERMS & CONDITIONS

13% BUYERS PREMIUM ON ALL PURCHASES

PAYMENT: FULL PAYMENT MUST BE MADE BY 5 PM WEDNESDAY, MARCH 9TH.

REMOVAL: SMALL ITEMS MUST BE REMOVED NO LATER THAN 4:00 PM FRIDAY, MARCH 11TH. REMOVAL FOR LARGE ITEMS WILL BE BETWEEN MONDAY, MARCH 14TH AND WEDNESDAY, MARCH 16TH

REMOVAL HOURS: 8:00 AM – 4:00 PM, NO WEEKEND REMOVAL.

WARRANTY DISCLAIMER: ALL SALES ARE FINAL. ALL ITEMS ARE BEING SOLD "AS IS, WHERE IS," WITH ALL FAULTS AND WITHOUT ANY WARRANTIES AS TO MERCHANTABILITY.

COMPLETE TERMS AND CONDITIONS OF SALE WILL BE AVAILABLE AT THE TIME OF SALE.



CASTLE TOOL TSM-20



POWERMATIC 66



RITTER R-875



2013 ECO SR-30



SCMI SI1GW



James G. Murphy Co.

Commercial & Industrial Auctioneers
P.O. Box 82160, Kenmore, WA 98028

PRESORTED
FIRST CLASS MAIL
U.S. POSTAGE
PAID
SEATTLE, WA
PERMIT NO. 963



REGISTER TO BID @ MURPHYAUCTION.COM

PUBLIC ONLINE AUCTION

KITCHEN PLUS CABINET SHOP

Woodshop

Start Date: 11AM | Wednesday - March 2

End Date: 11AM | Wednesday - March 9

Preview: 8AM to 4PM | Tuesday, March 8

11615 NE 116th St., Kirkland, WA 98034



James G. Murphy Co.
murphyauction.com
425.486.1246



2008 LIGMATECH MPH400/08

NO MINIMUMS - NO RESERVES



AGET FT94



(5) VESTIL H-150-LD



(23) SECTIONS OF
PALLET RACKING



SULLAIR FS8-25H/A

FOR MORE INFORMATION GO TO MURPHYAUCTION.COM • PHONE 425.486.1246