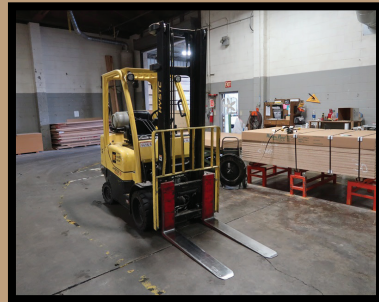


ROLLING STOCK



TERMS AND CONDITIONS

10% BUYERS PREMIUM ON ALL ITEMS

15% BUYERS PREMIUM ON ALL ONLINE PURCHASES

Due to insurance and safety reasons, children under 12 cannot be admitted

PAYMENT: Full payment must be made by the close of business auction day. CASH, CASHIERS CHECK, WIRE TRANSFER, MASTERCARD OR VISA ONLY. Checks are accepted ONLY with Bank Letter of Guarantee.

REMOVAL: Customers are responsible for removing their items from the auction site. No purchases may be removed during the auction unless announced by the auctioneer. No purchases may be removed until all purchases are paid for. **ALL ITEMS MUST BE REMOVED BY 4 PM, Tuesday, December 31st.**

Removal Hours: One hour after the auction or 8:00 am – 4:00 pm. NO WEEKEND REMOVAL.

WARRANTY DISCLAIMER: ALL SALES ARE FINAL. All items are being sold "As Is, Where Is," With All Faults and without any warranties as to merchantability of fitness for a particular purpose. The principal, the auctioneer, the advertising coordinator, and any of their agents make no express or implied warranties of any type.

Failure to award bid: Online bidders will not have any claim against the James G. Murphy Co. for failure to submit bids to the auctioneer or any error on the bidding platform. In some instances the bidding platform may show an item awarded to a Online customer however we reserve the right to withdraw a bid awarded in error.

Complete terms and conditions of sale will be available at the time of sale. All information was obtained from sources deemed reliable. Although every precaution has been taken to ensure accuracy, the principal, the James G. Murphy Co., the advertising coordinator, and all of their agents shall not be responsible for any errors or omissions therein. It is for this reason that we recommend that all items be thoroughly inspected prior to the point of sale. Announcements made by the auctioneer at the time of sale take precedence over printed matter. Auctioneer reserves the right to sell accessories, parts or attachments on a separate and/or aggregate basis.

ABSENTEE BIDS: Absentee bids will be accepted with 25% Deposit. Absentee bids under \$100.00 are not accepted. For complete rules regarding absentee bids call our office or inquire at the auction site.

FOR MORE INFORMATION GO TO MURPHYAUCTION.COM • PHONE 425.486.1246

2-DAY PUBLIC AUCTION

WESTERN PANEL MANUFACTURING

VENEER MANUFACTURING EQUIPMENT & ROLLING STOCK - EUGENE, OR



KUPER EFS4200L



James G. Murphy Co.

Commercial & Industrial Auctioneers
P.O. Box 82160, Kenmore, WA 98028

PRESORTED
FIRST CLASS MAIL
U.S. POSTAGE
PAID
SEATTLE, WA
PERMIT NO. 963

**NO MINIMUMS • NO RESERVES
BID LIVE OR BID ONLINE**



James G. Murphy Co.

2-DAY LIVE AUCTION

WESTERN PANEL MANUFACTURING, INC.

Day 1:

9:00 AM | Wednesday - December 11

Location: 3553 W 1st Ave., Eugene, OR 97402

Preview: 8 AM to 4 PM Tuesday, December 10

Day 2:

9:00 AM | Thursday - December 12

Location: 2323 Cross St., Eugene, OR 97402

Preview: 8 AM to 4 PM Tuesday, December 10

OWNER RETIRING AFTER 33 YEARS

FOR MORE INFORMATION GO TO MURPHYAUCTION.COM • PHONE 425.486.1246



NO MINIMUMS - NO RESERVES



2-DAY PUBLIC AUCTION

WESTERN PANEL MANUFACTURING, INC.

Day 1:

9:00 AM | Wednesday - December 11

Location: 3553 W 1st Ave., Eugene, OR 97402

Preview: 8 AM to 4 PM Tuesday, December 10

Day 2:

9:00 AM | Thursday - December 12

Location: 2323 Cross St., Eugene, OR 97402

Preview: 8 AM to 4 PM Tuesday, December 10



KUPER EFS2800L



CEMCO 3000



OTT D99-150



DIMTER/WIGO 1032

James G. Murphy Co.

Commercial & Industrial Auctioneers



1.800.426.3008 - 425.486.1246

murphyauction.com

DAY 1 - 9AM - EUGENE, OR



DAY 1 HIGHLIGHTED ITEMS:

KUPER EFS4200L 14' HYDRAULIC ACTUATED GUILLOTINE STYLE VENEER CLIPPER W/PARALLEL FENCE, 4,500MM X 80MM CAPACITIES, TOUCHSCREEN CONTROLS, SAFETY CURTAINS

KUPER EFS2800L 9' HYDRAULIC ACTUATED GUILLOTINE STYLE VENEER CLIPPER W/PARALLEL FENCE, 2,800MM X 80MM CAPACITIES, TOUCHSCREEN, SAFETY CURTAINS

RUCKLE TYPE AFN34 11' HYDRAULIC ACTUATED GUILLOTINE STYLE VENEER CLIPPER, MOTORIZED BACK FENCE, SAFETY CURTAINS

JOSTING 7' MECHANICALLY ACTUATED GUILLOTINE STYLE VENEER CLIPPER

ADOLPH JOHN & CO TYPE FS1V 12' MECHANICALLY ACTUATED GUILLOTINE STYLE VENEER CLIPPER W/BACK FENCE

(2) **KUPER QFS800** MECHANICALLY ACTUATED CROSS CUTTING VENEER CLIPPERS, 800MM X APPROX 2MM CAPACITIES, 2.8KW

(2) **RUCKLE AS10** HYDRAULIC/MECHANICALLY ACTUATED CROSS CUTTING VENEER CLIPPERS, 1,000MM X APPROX 2MM CAPACITIES

(2) **MERRITT** MECHANICALLY OPERATED 9' VENEER CLIPPERS

(2) **KUPER TYPE FLI-1250** VENEER SPLICING MACHINES W/DROP TABLE, 48" THROAT, APPROX 15-60M/MIN FEED SPEEDS, APPROX 0.3-3.0MM VENEER THICKNESS, 460V, R200 SWING ARM TOUCH CONTROLS, PNEUMATIC CONTROLS ON GLUE HEAD & PRESSURE CONTROLS

(3) **KUPER TYPE FLI-1250** VENEER SPLICING MACHINES, (1)48" THROAT & (2) 38" THROATS, APPROX 15-60M/MIN FEED SPEEDS, APPROX 0.3-3.0MM VENEER THICKNESS, 460V, R200 SWING ARM TOUCH CONTROLS, PNEUMATIC CONTROLS ON GLUE HEAD & PRESSURE CONTROLS

(5) **KUPER TYPE FW-1150** 45" ZIG ZAG GLUE VENEER STITCHERS, (3) NOT INSTALLED, (1) 2003 WITH S/N:7173

ORMA MACHINE TYPE NPC10/200 HOT PRESS, 63"x122" CAPACITY, 200 TON, (10) RAMS W/450/650MM STROKE, 24KW BOILER, APPROX 63" X 134" POWERED INFEED BELT, END OR SIDE UNLOAD, APPROX 48" X 10' OUTFEED GRAVITY ROLLS, CONTROLS & ELECTRICS, IN & OUTFEED SCISSOR LIFTS AVAILABLE

OTT D99-150 HOT PRESS, 55"x102" CAPACITY, (4) RAMS W/150MM STROKE, 11KW BOILER, APPROX 55" X 110" POWERED INFEED BELT, APPROX 48" X 117" POWERED OUTFEED BELT, CONTROLS & ELECTRICS, IN & OUTFEED SCISSOR LIFTS AVAILABLE

CUSTOM BUILT APPROX 2' X 4' AIR OPERATED COLD PRESS (NOT INSTALLED)

BLACK BROS 6' TWO SIDED GLUE SPREADER

ADOLF FRITZ LAG2 5' TWO SIDED GLUE SPREADER

BLACK BROS 4' TWO SIDED GLUE SPREADER

BLACK BROS 3' TWO SIDED GLUE SPREADER

LARGE QUANTITY OF UNUSED & USED GLUE SPREADER ROLLS

SCMI Z45 AUTOMATIC HORIZONTAL PANEL/BREAM SAW, APPROX 177" LENGTH OF CUT, APPROX 3-1/2" THICKNESS OF CUT, 10 HP MAIN SAW, 1-1/2 HP SCORING SAW, AIR TABLE & GRAVITY ROLL, IN & OUTFEED TABLES

CAIN 36010HLS AUTOMATIC HORIZONTAL PANEL/BREAM SAW, APPROX 120" LENGTH OF CUT, APPROX 3" THICKNESS OF CUT, SWING ARM CONTROLS, (3) IN & OUTFEED TABLES

RODGERS 707-VF AUTOMATIC VERTICAL PANEL/BREAM SAW, APPROX 120" LENGTH OF CUT, MAIN & SCORING SAWS, HYDRAULIC CARRIAGE TRAVEL

RODGERS 76.8RH HORIZONTAL PANEL/BREAM SAW W/IN & OUTFEED TABLES
UNITRONEX DZJA-300 5' SINGLE BELT STROKE SANDER W/APPROX 50" X 120" FEED THRU BELT MOUNTED ON APPROX 3' X 6' SCISSOR LIFT

HEESEMANN TYPE DBV1 8' TWIN CROSS BELT SANDER W/2,550MM SANDING WIDTH, 18-1/2KW MOTORS & PNEUMATIC PRESSURE BEAM, FED BY PARALLEL CARPET STRIP BELTS W/VARIABLE SPEED, MOTORIZED HEIGHT ADJUSTMENT OF THE TABLE (NOT INSTALLED)

JENKINS 90 8' 8-HEAD DOUBLE END TENONER W/(2) 5 HP ROUTER HEADS, (2) 1 HP ROUTER HEADS, (2) 5 HP MAIN SAWS & (2) 5 HP TILTING TRIM SAWS, POWER TRAVEL (NOT INSTALLED)

TORWEGGE 10' 4-HEAD DOUBLE END TENONER W/(2) 3 HP & (2) 3-1/2 HP HEADS, POWER TRAVEL (NOT INSTALLED)

4-BAG DUST COLLECTOR W/DAYTON 4C330 & 5 HP FAN, SINGLE PHASE

(3) 4-BAG DUST COLLECTORS W/5 HP & 15 HP MOTORS (NOT INSTALLED)

DUSTEK 1000DB 3-BAG DUST COLLECTOR W/10 HP MOTOR, SINGLE PHASE

3-BAG DUST COLLECTOR W/10 HP MOTOR, SINGLE PHASE

DUSTEK DB500 2-BAG DUST COLLECTOR W/5 HP MOTOR, SINGLE PHASE

JET DC1883 2-BAG DUST COLLECTOR W/3 HP MOTOR, SINGLE PHASE

CENTRAL MACHINERY SINGLE BAG DUST COLLECTOR W/2 HP MOTOR, SINGLE PHASE

INGERSOLL RAND TS10 7-1/2 HP VERTICAL TANK MOUNTED COMPRESSOR, 175 PSI, 80 GALLON, ATTACHED STARTER

INGERSOLL RAND TTE 10 HP VERTICAL TANK MOUNTED COMPRESSOR (NOT INSTALLED)

INGERSOLL RAND 7-1/2 HP HORIZONTAL TANK MOUNTED COMPRESSOR

APPROX 3' X 6' VERTICAL AIR RECEIVER

BUSH HOG 70-8 8' SCRAPER ATTACHMENT

BUSH HOG B0-720 7' SCRAPER ATTACHMENT W/(6) RIPPERS

COPPERLOY APPROX 64" X 32' FORKLIFT RAMP & APPROX 52" X 32' FORKLIFT RAMP

LAMB MINI HOG W/20 HP MOTOR, CRUSHER ROLL & CONVEYOR, TAYLOR 6' CLAMP RACK, (4) BLOWERS APPROX 20"-40" W/15-30 HP MOTORS, APPROX 6' & 5' DIA CYCLONES, PIPING, (10) SCISSOR LIFTS 3,500-6,000 LB, BOYLE & EMMES 24" X 84" ENGINE LATHE DITCH WITCH, NUMEROUS GRAVITY ROLLCASES & CONVEYORS,

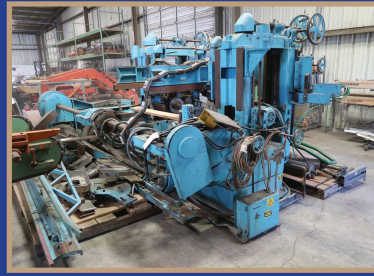
(2) SWEED 450AE SCRAP CHOPPERS, FORKLIFT DRUM ATTACHMENT, FORK EXTENSIONS, MAN TOWER, DUMPSTERS, AUTO LOADER 2,500 LB ROTARY SCISSOR LIFT, (2) FORKLIFT RAMPS

ASSORTED TOOLS AND INVENTORY: WELDERS, OXY/ACETYLENE SET, TABLE SAW, POWER FEED, BANDSAW, MINI LATHE, DRILL PRESS, DIE GRINDERS, CHOP SAWS, AIR & ELECTRIC POWER TOOLS, STEAM CLEANER, FLOOR VACS, PALLET JACK, BANDERS, MOTORS, REDUCERS, BEARINGS, ELECTRICAL BOXES, FANS, CYLINDERS, VALVES, PUMPS, CHAIN, HOSES, PIPE FITTINGS, BELTS, NUTS & BOLTS, BEARINGS, GEARS, HUBS, PIPING, STEEL, NUMEROUS MATERIAL TABLES & CARTS, STEEL RACKS & TABLES, QUANTITY OF VENEER



FOR DETAILS AND PHOTOS VISIT MURPHYAUCTION.COM

VENEER MANUFACTURING EQUIPMENT



ROLLING STOCK:

- 2002 HYSTER S80XM-BCS** 8,000 LB CAPACITY FORKLIFT, PROPANE, 145.7" 2-STAGE MAST W/SIDE SHIFT, 48" FORKS, SOLID TIRES, HOUR METER READS: 7,814, S/N: E004V02487Z
- 2003 HYSTER S65XM** 6,200 LB CAPACITY FORKLIFT, PROPANE, 146.1" 2-STAGE MAST W/SIDE SHIFT, 48" FORKS, SOLID TIRES, HOUR METER READS: 6,157, S/N: D187V29522A
- 1999 HYSTER S65XM** 7,100 LB CAPACITY FORKLIFT, PROPANE, 2-STAGE MAST W/SIDE SHIFT, 48" FORKS, SOLID TIRES, HOUR METER READS: 7,944, S/N: D187V15170W
- CAT T80CSTR** 8,000 LB CAPACITY FORKLIFT, PROPANE, 170" 2-STAGE MAST W/SIDE SHIFT, 48" FORKS, SOLID TIRES, HOUR METER READS: 2,172, S/N: 54Y0560
- CAT GC30** 6,000 LB CAPACITY FORKLIFT, PROPANE, 185" 3-STAGE MAST W/SIDE SHIFT, 48" FORKS, SOLID TIRES, HOUR METER READS: 7,696, S/N: 6EM00962
- CAT T60D** 6,200 LB CAPACITY FORKLIFT, PROPANE, 121" 2-STAGE MAST W/SIDE SHIFT, 46" FORKS, SOLID TIRES, HOUR METER READS: 7,886, S/N: 5RB0056
- 1996 HYSTER S70B-BCS** 6,250 LB CAPACITY FORKLIFT, PROPANE, 218" 2-STAGE MAST W/SIDE SHIFT, 48" FORKS, SOLID TIRES, HOUR METER READS: 5,181, S/N: B4DA783T
- 1991 HYSTER S60B** 6,200 LB CAPACITY FORKLIFT, 145.5" 2-STAGE MAST W/SIDE SHIFT, 48" FORKS, SOLID TIRES, S/N: B004L05943M
- 1998 HYSTER H60C** 6,000 LB CAPACITY FORKLIFT, PROPANE, 121.5" 2-STAGE MAST W/48" FORKS, DUAL PNEUMATIC TIRES, HOUR METER READS: 331, S/N: C005C15398V
- YALE GLC-080-LBNSBT-083** 8,000 LB CAPACITY FORKLIFT, PROPANE, 181" 3-STAGE MAST W/SIDE SHIFT, 48" FORKS, SOLID TIRES, S/N: PA194204
- YALE L8-3C-050-SWD-096** 5,000 LB CAPACITY FORKLIFT, 180" 2-STAGE MAST W/SIDE SHIFT, 48' FORKS (NOT RUNNING), S/N: L911825Y
- 1995 FREIGHTLINER FL70** 22' DUAL WHEEL PASSENGER SIDE CURTAIN VAN TRUCK, CUMMINS 6-CYLINDER DIESEL ENGINE, 6-SPEED MANUAL TRANSMISSION, LIFT GATE, 11R22.5 TIRES, ODOMETER READS: 238,063, S/N: 1FV6HLAC1SL534563
- 1987 FORD F800** 20' DUAL WHEEL TRUCK W/FORD 370-4V DIESEL ENGINE, 5-SPEED MANUAL TRANSMISSION, CHELSEA PTO, 20' BED W/HEADACHE RACK & STAKE POCKETS, R22.5 TIRES, ODOMETER READS: 40,516, S/N: 1FDXF82HVA08466
- 1955 CHEV 6500** DUAL WHEEL TRUCK W/14' STEEL DUMP BOX, GAS ENGINE, MANUAL TRANSMISSION, 8.25X20 TIRES, ODOMETER READS: 51,260, S/N: 0348203F255N
- CASE 430** 2WD TRACTOR W/DIESEL ENGINE, 8-SPEED TRANSMISSION, PTO, 18.9-24 TIRES, 6' BUCKET
- 2007 KAWASAKI MULE 610** 4WD ATV, HOUR METER READS: 680, S/N: JKA1FEA117B521745



DAY 2 HIGHLIGHTED ITEMS:

- 1998 BUTTERING VEGA 213Q-CE** 48" SANDER, 3-HEAD W/16 HP MOTORS, TWO LONG GRAIN & ONE CROSS GRAIN HEAD, CONSTANT PASSLINE SEGMENTED PAD, BELT TRACKING, SWING ARM CONTROLS, 53" X 90" FEED THRU BELT, 5.2MM -1 1/2" CAPACITY, IN & OUTFEED
- TIMESAVERS 252-11C** 48" SANDER, SINGLE HEAD W/50 HP MOTOR, DUAL ACTION SANDING HEAD, CONSTANT PASSLINE W/SEGMENTED PLATEN, SINGLE POSI-TRACK BELT TRACKING, TOUCHSCREEN CONTROLS, 48" X 84" FEED THRU BELT, VACUUM BED, 1/8"-1 1/2" CAPACITY, IN & OUTFEED
- CEMCO 4000** 60" SANDER, SINGLE HEAD W/50 HP MOTOR, SMOOTHING BAR ONLY, 60" X 46" FEED THRU BELT, BELT TRACKING, 5.2MM -1 1/2", IN & OUTFEED
- CEMCO 3000** 60" SANDER, SINGLE COMBINATION HEAD W/75 HP MOTOR, 60" X 96" FEED THRU BELT, 9"-65LB RUBBER DRUM & 4" SMOOTHING BAR, 1/8"-1 1/2" CAPACITY, BELT TRACKING, IN & OUTFEED, HOUR METER READS: 2,882
- CEMCO WBS197** 48" SANDER, 3-HEAD W/(1) 75 HP & (2) 50 HP MOTORS, 51" X 120" FEED THRU BELT, FIRST HEAD IS 95 LB RUBBER DRUM, SECOND HEAD 65 LB RUBBER DRUM, THIRD HEAD 4" SMOOTHING BAR, 5.2MM-1 1/2" CAPACITY, BELT TRACKING, PUSH ARM VACUUM PANEL FEED, IN & OUTFEED
- CUSTOM DESIGN** 50"-100" PLATEN 2-OPENING, 2-COLUMN HOT PRESS W/2014 HEAT EXCHANGE & TRANSFER CO 30KW BOILER MODEL CC12KM-213-183, 550-DEGREE MAX, 5.2MM-1 1/2" CAPACITY, SIEMENS SIMATIC TOUCHSCREEN CONTROLS



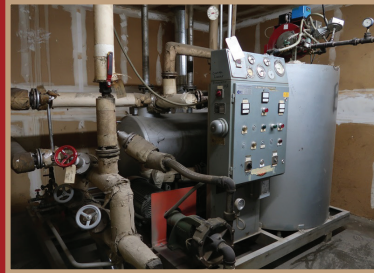
ONLINE BIDDING AVAILABLE

MURPHYAUCTION.COM
4 2 5 - 4 8 6 - 1 2 4 6



BID LIVE OR ONLINE @ MURPHYAUCTION.COM

DAY 2 - 9AM - EUGENE, OR



OTT 63"-147" PLATEN SINGLE OPENING HOT PRESS, (8) 4-1/2" RAMS, 2-COLUMN, APPROX 5 HP HYDRAULIC UNIT & PUMP, DIGITAL READOUT CONTROLS, 1 1/16"-1 1/2" CAPACITY, ATTACHED ELECTRICS

BURKLE 59"X142" PLATEN SINGLE OPENING HOT PRESS, (8) 4-1/2" RAMS, 4-COLUMN, 305 ATV, 5.5KG/CM2, APPROX 5 HP ATTACHED HYDRAULIC UNIT, 5.2MM-1 1/2" CAPACITY

HEIZOMAT MT400SPB GAS FIRED BOILER W/GAS BURNER, DEMING 4121 PUMP W/20 HP MOTOR, HEIZA AB1000 & A400 TANKS (CURRENTLY USED ON BURKLE PRESS)

2011 HEAT EXCHANGE & TRANSFER CO CC12-248-483 HEAT EXCHANGER (CURRENTLY USED ON OTT PRESS)

DIMTER/WIGO 1032 DOUBLE END TENONER, 10' CAPACITY, 4-HEAD W/APPROX 2KW & 4KW MOTORS, POWERED 5' FEED THRU CHAINS W/DEMAG GEARHEAD MOTOR, POWERED TRAVEL, 1 HP BLOWER

F. MEYER & SCHWABEDISSSEN DA59 DOUBLE END TENONER, 5' CAPACITY, 6-HEAD W/APPROX 2KW & 4KW MOTORS, MOTORIZED 7' FEED THRU CHAINS & TRAVEL

(2) BLACK BROS 62" TWO SIDED GLUE SPREADERS

BLACK BROS 50" TWO SIDED GLUE SPREADER

SAFETY SPEED CUT 3-1/4" X 8' VERTICAL PANEL SAW

SWEED AST200 10' MECHANICAL LOAD TURNER, LOAD AND UNLOAD FROM SAME SIDE
PRENTICE 2448 SHREDDER W/30 HP MOTOR TO REDUCER, TOP INFEED, BOTTOM DISCHARGE

APPROX 17" X 32' CLEAN OUT BELT CONVEYOR W/GEARHEAD MOTOR

APPROX 15" X 12' CLEAN OUT BELT CONVEYOR W/GEARHEAD MOTOR

2013 QNW F-30-V TANK MOUNTED ROTARY SCREW COMPRESSOR, 30 HP MOTOR, AIR COOLED, HOUR METER READS: 16,468

QNW AUTO DUAL 25 HP COMPRESSOR, AUTO DUAL CONTROL W/MODULATION (NOT INSTALLED), HOUR METER READS: 5,280

ZEKS 100NCGA100 NON-CYCLING 10 CFM REFRIGERATED AIR DRYER
5-BAG DUST COLLECTOR W/TECO 25 HP MOTOR, HORIZONTAL HOOD
W/APPROX 2' X 9' BAGS

NORTH TECH SDC2042 SINGLE BAG DUST COLLECTOR W/2 HP/3,600 RPM MOTOR
AUTO LOADER ROTARY 2,500 LB CAPACITY HYDRAULIC OPERATED SCISSOR LIFT,
(3) 3' X 6' X 4,000 LB CAPACITY HYDRAULIC OPERATED SCISSOR LIFTS,
(4) 3' X 6' X 3,500 LB CAPACITY HYDRAULIC OPERATED SCISSOR LIFTS, (2) 3' X 7' HYDRAULIC OPERATED SCISSOR LIFTS, (9) 3' X 6' HYDRAULIC OPERATED SCISSOR LIFTS

LINCOLN CV300 WELDER W/LN-7 WIRE FEEDER, LINCOLN IDEALARC 250 AC/DC WELDER, OXY/ACETYLENE SET, FAMCO 5,000 LB SHOP FRAME, FOREMOST 6" METAL BANDSAW, FOREMOST 18" DRILL PRESS, 10" TABLE SAW W/FENCE, BLACK HAWK 12 TON SHOP PRESS, HUSKY PRO 2 HP/5.5 CFM COMPRESSOR, HITACHI C10FCH COMPOUND MITRE SAW,

SWEED 450AF SCRAP CHOPPER, STEEL BANDING CARTS W/TOOLS, DUMPSTERS, FANS, TABLES, CARTS, LIGHTS,

(2) 4' X 14' X 16' CANTILEVER RACKS, BELTS, HOSES, MOTORS, BEARINGS, ELECTRICS, FILTERS, CYLINDERS, HYDRAULIC & PIPE FITTINGS, NUTS & BOLTS

ROLLING STOCK:

2012 HYSTER S70FT 6,750 LB CAPACITY FORKLIFT, PROPANE, 146.1" 2-STAGE MAST W/SIDE SHIFT, 48" FORKS, SOLID TIRES, HOUR METER READS: 6,329, S/N: F187V20987K

2002 HYSTER S65XM 6,200 LB CAPACITY FORKLIFT, PROPANE, 146.1" 2-STAGE MAST W/SIDE SHIFT, 48" FORKS, SOLID TIRES, HOUR METER READS: 9,340, S/N: D187V24567Z

1997 HYSTER S65XM 6,400 LB CAPACITY FORKLIFT, PROPANE, 181.9" 3-STAGE MAST W/SIDE SHIFT, 48" FORKS, SOLID TIRES, HOUR METER READS: 15,783, S/N: D187V06781U

1997 HYSTER S65XM 6,100 LB CAPACITY FORKLIFT, PROPANE, 181.5" 3-STAGE MAST W/SIDE SHIFT, 48" FORKS, SOLID TIRES, HOUR METER READS: 23,392, S/N: D177B37640U



FOR DETAILS AND PHOTOS VISIT MURPHYAUCTION.COM