



HYPER asset maximization services

James G. Murphy Co.
In Conjunction With Hyperams

proxibid.
BidSpotter



THREE PUBLIC WEBCAST AUCTIONS BESSE FOREST PRODUCTS

BY ORDER OF COURT APPOINTED RECEIVER

Auction: 10AM CST | December 5th
Preview: December 4th
Rice Lake

Complete Hardwood Veneer Mill
38 E. Messenger St, Rice Lake, WI

Real Estate For Sale



Auction: 10AM CST | December 10th
Preview: December 9th

Goodman Complete Green Hardwood,
Veneer Mill & Dry Kiln Facility
200 C Ave, Goodman, WI 54125

Real Estate For Sale



Auction: 10AM CST | December 12th
Preview: December 11th

Mattoon Complete Green Hardwood
Lumber & Veneer Mill
610 Railroad Ave, Mattoon, WI 54450

Real Estate For Sale



Rice Lake, WI
Complete Hardwood Veneer Mill
38 E. Messenger St, Rice Lake, WI

AUCTION: 10AM CST | DECEMBER 5TH

Real Property Available:

- Prime lakefront property in downtown Rice Lake
- 11-acre property
- 111,000 square foot clear span building
- New roof and HVAC (2023)
- Production Capacity: 7,500,000 board feet per year

**REAL
ESTATE
FOR
SALE**

Colliers

FOR ADDITIONAL INFORMATION CONTACT
 Ethan Haglund
 Ethan.Haglund@Colliers.com - 952.200.6199



Mill Equipment:

- Nicholson A6 ring debarker with Morbark log washer, Morbark 84" cut-off saw with cab control, ADS metal detector, log deck
- (3) COE veneer lathes (66", 100", 115") with infeed chains, cleaning stations, core output, and drops
- Merritt rotary clipper, Babcock BSH press dryers, Merritt shear clippers, and veneer stacking robot
- (4) Turbo autoclaves
- 2021 Superior natural gas boiler, Hurst biomass boiler, biomass feeder, (2) storage silos
- Complete plant support: Maintenance building, compressors, spares, and more

Rolling Stock:

- John Deere 1110D ECO III log forwarder
- 2020 Komatsu WA270-8 wheel loader
- Volvo L90E wheel loader
- JLG 450A articulated boom manlift
- Case 1845C skid steer
- Caterpillar and Mitsubishi forklifts

AUCTION: 10AM CST | DECEMBER 10TH

Goodman, WI
Complete Green Hardwood, Veneer Mill &
Dry Kiln Facility
200 C Ave, Goodman, WI 54125



BESSE
 FOREST PRODUCTS GROUP

Real Property Available:

- 222,000 square feet of buildings
- Production Capacity: 11.3M BF Yearly (Sawmill) 15M BF Yearly (Kilns)
- 134-acre property

REAL ESTATE FOR SALE

Colliers

FOR ADDITIONAL INFORMATION CONTACT
 Ethan Haglund
 Ethan.Haglund@Colliers.com - 952.200.6199

Mill Equipment:

- New lathe line (2021), 15-opening plywood press, (2) Timesaver plywood sanders, (2) kilns
- Nicholson A6 ring debarker and feed system
- (2) Cleereman 3HD BLK carriages (rebuilt 2018), McDonough band head rig (6')
- HMC 12-head trim saw, with infeed positioning and belt conveyors
- SII and American continuous drying kilns
- Complete plywood line: Stacking, 15-opening heated platen press, unload and cooling racks, putty line, saw and sand line

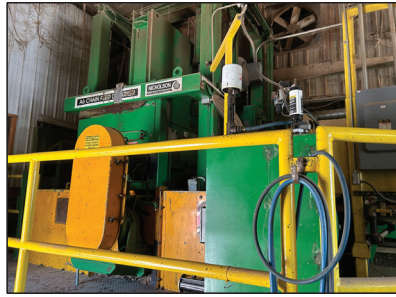
Rolling Stock:

- 2016 Ponsse King Elephant log forwarder
- 2015 Volvo L90G wheel loader
- Caterpillar 938F wheel loader
- Yale 33,000 lb. forklift, Hyster 28,000 lb. forklift, Yale 21,000 lb. forklift



AUCTION: 10AM CST | DECEMBER 12TH

Mattoon, WI
Complete Green Hardwood Lumber & Veneer Mill
610 Railroad Ave, Mattoon, WI 54450



Real Property Available:

REAL ESTATE FOR SALE

- 138,000 square feet of buildings
- Production Capacity: 7.5 M BF Yearly (Veneer) 6.2M BF Yearly (Sawmill)
- 40-acre property

Colliers

FOR ADDITIONAL INFORMATION CONTACT

Ethan Haglund

Ethan.Haglund@Colliers.com - 952.200.6199

Mill Equipment:

- HMC Rosser head debarker, Cleerman 3HD block carriage, Mellott log turner, log deck, cant catcher
- Crosby 2-saw edger, Armstrong bandsaw sharpening room
- (2) COE dryers, Babcock BSH dryer, Fanuc robots
- Complete plywood line: COE plucker, Johnson and Mannington plywood presses, Black Brothers glue spreaders

Rolling Stock:

- Komatsu WA250PT-5 wheel loader, WA200PZ-6 wheel loader
- Volvo L60F wheel loader, Timbco TF820 log forwarder
- Toyota, Yale, Clark, Daewoo, Nissan forklifts (3,000–6,000 lb. capacity)
- Ottawa 30 spotter truck

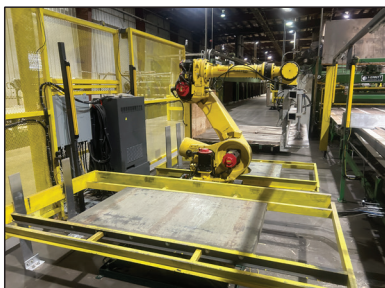


James G. Murphy Co.

425.486.1246

Murphyauction.com

HYPER 
asset maximization services



HYPER 
asset maximization services

TERMS AND CONDITIONS

18% BUYERS PREMIUM ON ALL ITEMS

DUE TO INSURANCE AND SAFETY REASONS, CHILDREN UNDER 18 CANNOT BE ADMITTED

REMOVAL: REMOVAL DATES WILL BE ANNOUNCED WHEN THE AUCTION CATALOGS ARE RELEASED

INSURANCE: ANYONE REMOVING EQUIPMENT THAT REQUIRES RIGGING, CUTTING, DISMANTLING OR ANY ALTERATIONS TO THE PROPERTY IS REQUIRED TO PROVIDE \$1,000,000.00 DOLLAR GENERAL LIABILITY INSURANCE CERTIFICATE.

WARRANTY DISCLAIMER: ALL SALES ARE FINAL. ALL ITEMS ARE BEING SOLD "AS IS, WHERE IS", WITH ALL FAULTS AND WITHOUT ANY WARRANTIES AS TO MERCHANTABILITY OF FITNESS FOR A PARTICULAR PURPOSE. THE PRINCIPAL, THE AUCTIONEER, THE ADVERTISING COORDINATOR, AND ANY OF THEIR AGENTS MAKE NO EXPRESS OR IMPLIED WARRANTIES OF ANY TYPE.

ADVERTISING DISCLAIMER: ALL INFORMATION WAS OBTAINED FROM SOURCES DEEMED RELIABLE. ALTHOUGH EVERY PRECAUTION HAS BEEN TAKEN TO ENSURE ACCURACY, THE PRINCIPAL, THE JAMES G. MURPHY CO., THE ADVERTISING COORDINATOR AND ALL THEIR AGENTS SHALL NOT BE RESPONSIBLE FOR ANY ERRORS OR OMISSIONS THEREIN. IT IS FOR THIS REASON THAT WE RECOMMEND THAT ALL ITEMS BE THOROUGHLY INSPECTED PRIOR TO THE POINT OF SALE.

HYPER 
asset maximization services



Located At Rice Lake



James G. Murphy Co.

Commercial & Industrial Auctioneers
P.O. Box 1127, Marysville, WA 98270

PRESORTED
FIRST CLASS MAIL
U.S. POSTAGE
PAID
SEATTLE, WA
PERMIT NO. 963



2020 KOMATSU WA270-8

THREE PUBLIC WEBCAST AUCTIONS BESSE FOREST PRODUCTS

BY ORDER OF COURT APPOINTED RECEIVER

Auction: 10AM CST | December 5th
Preview: December 4th
Rice Lake
Complete Hardwood Veneer Mill
38 E. Messenger St, Rice Lake, WI
Real Estate For Sale



Auction: 10AM CST | December 10th
Preview: December 9th
Goodman Complete Green Hardwood,
Veneer Mill & Dry Kiln Facility
200 C Ave, Goodman, WI 54125
Real Estate For Sale



Auction: 10AM CST | December 12th
Preview: December 11th
Mattoon Complete Green Hardwood
Lumber & Veneer Mill
610 Railroad Ave, Mattoon, WI 54450
Real Estate For Sale

