

# PUBLIC ONLINE AUCTION - WOODLAND, WA



2014 JOHN DEERE 245G LC



2012 HITACHI ZX160LC-5



2006 HITACHI ZX135US



2018 KUBOTA KX057-4



2016 KUBOTA KX057-2



2015 KUBOTA KX040-4



1996 CAT CS-563C



1997 CAT 815F



2017 KUBOTA SVL75-2



1998 JOHN DEERE 744H-MH



1999 JOHN DEERE 544H



2008 CAT 980H



1990 JOHN DEERE 8760



2003 BROCE BROOM RJ350



CLARK C500Y155



2001 ASPHALT ZIPPER AZ-480

## TERMS & CONDITIONS

- 13% BUYERS PREMIUM ON ALL PURCHASES -

**PAYMENT:** FULL PAYMENT MUST BE MADE BY 5:00 PM - WEDNESDAY, MAY 3RD.

**REMOVAL:** ALL ITEMS MUST BE REMOVED NO LATER THAN 4:00 PM - THURSDAY, MAY 11TH

**REMOVAL HOURS:** 8:00 AM – 4:00 PM MAY 4TH - 11TH

\*NO WEEKEND REMOVAL\*

**WARRANTY DISCLAIMER:** ALL SALES ARE FINAL. ALL ITEMS ARE BEING SOLD "AS IS, WHERE IS," WITH ALL FAULTS AND WITHOUT ANY WARRANTIES AS TO MERCHANTABILITY.

COMPLETE TERMS AND CONDITIONS OF SALE WILL BE AVAILABLE AT THE TIME OF SALE.



1.800.426.3008 - 425.486.1246 - [murphyauction.com](http://murphyauction.com)



# HEAVY EQUIPMENT, TRUCKS, TRAILERS & VEHICLES

1,633 HRS



2021 JOHN DEERE 750L LGP



**James G. Murphy Co.**

Commercial & Industrial Auctioneers  
P.O. Box 1127, Marysville, WA 98270

PRESORTED  
FIRST CLASS MAIL  
U.S. POSTAGE  
PAID  
SEATTLE, WA  
PERMIT NO. 963



**REGISTER  
TO BID @  
MURPHYAUCTION.COM**



# James G. Murphy Co.

Commercial & Industrial Auctioneers



## **PUBLIC ONLINE AUCTIONS**

### **Columbia Pacific Construction LLC**

**Heavy Equipment, Trucks, Trailers & Vehicles**

**Start Date: 10:00 AM | Wednesday - April 26**

**End Date: 10:00 AM | Wednesday - May 3**

**Preview: 8:00 AM to 4:00 PM | Tuesday, May 2**

**Location: 115 Butte Hill Road, Woodland, WA 98674**

**By Order of Receiver**

**1.800.426.3008 - 425.486.1246 - [murphyauction.com](http://murphyauction.com)**





# PUBLIC ONLINE AUCTION

## COLUMBIA PACIFIC CONSTRUCTION LLC



Heavy Equipment, Trucks, Trailers & Vehicles

**Start Date:** 10:00 AM | Wednesday - April 26

**End Date:** 10:00 AM | Wednesday - May 3

**Preview:** 8:00 AM to 4:00 PM | Tuesday, May 2

**Location:** 115 Butte Hill Road, Woodland, WA 98674

By Order of Receiver



2011 CAT D8T



2020 JOHN DEERE 245G LC



2019 KENWORTH T800



2016 KENWORTH T880

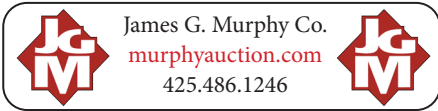


# PUBLIC ONLINE AUCTION - WOODLAND, WA

## HEAVY EQUIPMENT:

- 2011 CAT D8T CRAWLER DOZER**, 14' U-BLADE W/TILT, 4 BBL MULTI-SHANK RIPPER, A/C CAB, TOPCON MC-R3 GPS, HOUR METER READS: 8,736, S/N: FCT00154
- 2002 CAT D8R SERIES II CRAWLER DOZER**, 14' U-BLADE W/TWIN TILTS, 4BBL MULTI-SHANK RIPPER, CAB, HOUR METER READS: 14,481, S/N: 64Z00943
- 2007 CAT D6T XW CRAWLER DOZER**, 6 WAY BLADE, MULTI-SHANK RIPPER, TOPCON GX-60 GPS, SYSTEM 1 UNDERCARRIAGE, HOUR METER READS: 14,042, S/N: CAT00D6TJDJG00322
- 2021 JOHN DEERE 750L LGP CRAWLER DOZER**, 6-WAY BLADE, MULTI-SHANK RIPPER, CAB, SMART GRADE, HOUR METER READS: 1,633, S/N: 1T0750LXHMF402328
- 2015 HITACHI ZX350LC-6N HYDRAULIC EXCAVATOR**, PIN GRABBER, AUX. HYDRAULICS, CLEAN OUT BUCKET, HOUR METER READS: 8,455, S/N: 1FFDDR70AFF940081
- 2019 JOHN DEERE 345G LC HYDRAULIC EXCAVATOR**, PIN GRABBER, BUCKET, AUX HYDRAULICS, TOPCON GRADE SYSTEM, HOUR METER READS: 3,038, S/N: 1FF345GXKKF020442
- 2020 JOHN DEERE 245G LC HYDRAULIC EXCAVATOR**, PIN GRABBER, AUX. HYDRAULICS, CLEAN OUT BUCKET, REAR CAM, HOUR METER READS: 3,238, S/N: 1FF245GXLKF801397
- 2014 JOHN DEERE 245G LC HYDRAULIC EXCAVATOR**, PIN GRABBER, AUX. HYDRAULICS, HYD THUMB, DIGGING BUCKET, AUTO LUBE, HOUR METER READS: 7,580, S/N: 1FF245GXECE600111
- 2012 HITACHI ZX160LC-5 HYDRAULIC EXCAVATOR**, PIN GRABBER, BUCKET, HYD THUMB, AUX HYD, S/N: 1FFDBC70CCE230009
- 2006 HITACHI HYDRAULIC EXCAVATOR**, PIN GRABBER, PSM THUMB, BUCKET, BLADE, HOUR METER READS: 12,827, S/N: FF01SCQ071245
- 2016 KUBOTA KX057-4 MINI HYDRAULIC EXCAVATOR**, PIN GRABBER, BUCKET, HYDRAULIC THUMB, SWING BOOM, BLADE, CANOPY, RUBBER TRACKS, HOUR METER READS: 4,953, S/N: 27882
- 2018 KUBOTA KX057-4 MINI HYDRAULIC EXCAVATOR**, BUCKET, HYD THUMB, AUX. HYDRAULICS, SWING BOOM, BLADE, CAB, RUBBER TRACKS, HOUR METER READS: 5,222, S/N: 29273
- 2015 KUBOTA KX040-4 MINI HYDRAULIC EXCAVATOR**, BUCKET, HYD THUMB, AUX. HYDRAULICS, SWING BOOM, BLADE, CANOPY, RUBBER TRACKS, HOUR METER READS: 4,792, S/N: 23982
- 1985 CAT 16G MOTOR GRADER**, PUSH BLOCK, 16' MOLD BOARD, MULTI-SHANK RIPPER, 8F/8R, CAB, HOUR METER READS: 18,345, S/N: 93U02514
- 2000 VOLVO A35C ARTICULATED ROCK TRUCK 6X6**, 26.5R25, ODOMETER READS: 59,218, HOUR METER READS: 18,077, S/N: A35CV60583

- 2008 CAT 980H WHEEL LOADER**, SPADE NOSE BUCKET, CAB, 29.5R25, HOUR METER READS: 12,869, S/N: CAT0980HAJMS04128
- 2016 JOHN DEERE 544K WHEEL LOADER**, AUX. HYDRAULICS, QUICK CONNECT, GP BUCKET, 20.5R25, HOUR METER READS: 7,815, S/N: 1DW544KZCGF675872
- 1999 JOHN DEERE 544H WHEEL LOADER**, QUICK CONNECT BUCKET, CAB, 3 RD VALVE, 20.5R25, HOUR METER READS: 22,625, S/N: DW544HX572746
- 1998 JOHN DEERE 744H-MH WHEEL LOADER**, S/N: DW744HM566977
- 2009 JOHN DEERE 310SJ 4X4 LOADER BACKHOE**, Q/C BUCKET, CANOPY, EXTENDAHOE W/HOE PAC, AUX. HYDRAULICS, HOUR METER READS: 5,325, S/N: T0310SJ172190
- 2017 KUBOTA SVL75-2 TRACKED SKIDSTEER LOADER**, QUICK CONNECT BUCKET, AUX. HYDRAULICS, CAB, HOUR METER READS: 1,413, S/N: 31470
- 1990 JOHN DEERE 8760 ARTICULATING TRACTOR 300 HP**, 4X4, (2) REMOTES, TOW BAR, CAB, FRONT/REAR DUALS, 24.5-35, HOUR METER READS: 9,598, S/N: RW8760H002206
- 2003 BROCE BROOM RJ350 BROOM**, DIESEL, FRONT WATER TANK, CAB, HOUR METER READS: 2,125, S/N: 403355
- CLARK C500Y155 11,750 LB CAP. DUAL SOLID TIRED FORKLIFT**, 149" 2-STAGE MAST, SIDE SHIFT, PROPANE, HOUR METER READS: 1,930, S/N: Y015-140-7013
- 2003 DYNAPAC CA262D VIBRATORY SMOOTH DRUM ROLLER**, CUMMINS, 84" DRUM, DRUM DRIVE, CANOPY, 23.1X26, HOUR METER READS: 7,908, S/N: 67220541
- 1997 CAT 815F PADFOOT COMPACTOR**, BLADE, CANOPY, HOUR METER READS: 15,024, S/N: 1GN00424
- 1996 CAT CS-563C VIBRATORY SMOOTH DRUM ROLLER**, 84" DRUM, DRUM DRIVE, CAB, 23.1X26, HOUR METER READS: 4,090, S/N: 4LN00348



2002 CAT D8R SERIES II



2007 CAT D6T XW



2000 VOLVO A35C



2019 JOHN DEERE 345G LC



2015 HITACHI Z350LC-6N



2019 ASPEN HHT/RL



1985 CAT 16G



2016 JOHN DEERE 544K



2009 JOHN DEERE 310SJ



2003 DYNAPAC CA262D



# HEAVY EQUIPMENT, TRUCKS, TRAILERS & VEHICLES

## HEAVY TRUCKS:

**2016 KENWORTH T800** 5-AXLE DUMP TRUCK, PACCAR MX13 - 475HP, RTLO16908LL - 8LL, RT46-164EH - 46,000 REARS W/4.30 RATIO, CHALMERS SUSPENSION, DOUBLE FRAME, 20,000 FRONT, (3) DROPS, 20' STEEL BOX W/VIBRATOR, PLUMBED FOR PUP, ODOMETER READS: 308,972, S/N: 1NKDXPTX8GR121829

**2016 KENWORTH T880** 5-AXLE DUMP TRUCK, PACCAR MX13 - 475 HP, FO-16E308LL-VCS AUTO, D46170HP - 46,000 REARS W/4.30 RATIO, DOUBLE LOCKERS, DOUBLE FRAME, CHALMERS SUSPENSION, 20,850 FRONT, (3) DROPS, 20' 6" STEEL BOX W/VIBRATOR, PLUMBED FOR PUP, ODOMETER READS: 329,143, S/N: 1NKZXPTX7GJ480262

**1997 KENWORTH W900** TRI/A DUMP TRUCK, CAT 3406-475HP, 13 SPD, CHALMERS SUSPENSION, DOUBLE FRAME, DROP AXLE, 16' 6" STEEL BOX, PLUMBED FOR PUP, TARP, ODOMETER READS: 755,989, S/N: 1NKWLB9X2VR752474

**2003 INTERNATIONAL 7600** T/A DUMP TRUCK, CAT C12, EATON TRANS., 13' STEEL BOX, TALLS 312 PLOW, ODOMETER READS: 253,773, S/N: 1HTWXAXT03J071115

**2000 FREIGHTLINER FL70** S/A DUMP TRUCK, CAT 3126-190HP, 7 SPD, 10' STEEL BOX, 26,000 GVW, HYD BRAKES, ODOMETER READS: 76,305, S/N: 1FV3HJAA3YHB19538

**2019 KENWORTH T880** TRI/A TRACTOR, CUMMINS ISX15 - 565HP, RTLO18915B - 18 SPD, D46 - 170HP - 46,000 REARS W/3.73 RATIO, LOCKERS, 14,320 FRONT, 237" WHEEL BASE, DROP AXLE, WET KIT, ODOMETER READS: 277469, S/N: 1XKZP4EX4KJ258202

**2009 KENWORTH T800** TRI/A TRACTOR, CAT C15 - 475HP, RTLO18918B2 - 18 SPD, D46-170P - 46,000 REARS W/3.73 RATIO, 14,320 FRONT, 237" WHEEL BASE, DROP AXLE, WET KIT W/1972 GENERAL T/A LOG TRAILER, S/N:DAL3718, ODOMETER READS: 740941, S/N: 1XKDB0X69R254369

**2019 KENWORTH T800** TRI/A TRACTOR, CUMMINS ISX15, RTLO20918B-18 SPD, RT46-164PEH-46,000 REARS W/4.30 RATIO, DOUBLE LOCKERS, DOUBLE FRAME, AUTO SIGN, DROP AXLE, WET KIT, PROTECH HEADACHE RACK, ODOMETER READS: 189,927, S/N: 1XKDP4TXXKR239555

**2001 INTERNATIONAL 4900** T/A TRACTOR, DT466E, 7 SPD, DOUBLE FRAME, WET KIT, ODOMETER READS: 16,200, S/N: 1HSSDAAN81H357871

**2006 KENWORTH T300** FUEL LUBE TRUCK, CUMMINS ISC, AUTO, FUEL TANK, PRODUCT TANKS, HOSE REELS, PUMPS, DISPENSERS, WASTE OIL RECOVERY SYSTEM, AIR COMPRESSOR, ODOMETER READS: 100,814, S/N: 2NKMHZ7X76M145483

**1985 OSHKOSH 6X6** WATER TRUCK, CUMMINS 6 CYL, 9 SPD, APPROX. 4,000 GALLON STEEL TANK, FRONT, REAR, SIDE SPRAY, PUMP, ODOMETER READS: 391,956, S/N: 10T2D3EC3F1025491

**1988 KENWORTH T800** T/A WATER TRUCK, CUMMINS DIESEL, 18 SPD, FRONT, SIDE, REAR SPRAY, PUMP, ODOMETER READS: 962,646, S/N: 2NKDL29X8JM502617

**1988 KENWORTH T800** T/A WATER TRUCK, CUMMINS 6 CYL, 13 SPD, FRONT, BOTH SIDE, REAR SPRAY, PTO SELF LOADING PUMP, HOSE REEL, S/N: 1NKBHB8XXJJ009370

**2018 GMC 3500HD** DURAMAX CREW CAB SERVICE BODY TRUCK, AUTO, 9' BODY, ODOMETER READS: 80,903, S/N: 1GD41VCY0JF122302

**2012 CHEV 3500HD** DURAMAX 4X4 SERVICE BODY TRUCK, AUTO, 11' BODY, PRODUCT TANKS, REELS, ODOMETER READS: 110,613, S/N: 1GB3KZCL5CF125969

**2009 CHEV 3500HD** DURAMAX CREW CAB 4X4 SERVICE TRUCK, AUTO, 8' BODY, ODOMETER READS: 245,048, S/N: 1GCJK936X9F126640

**2006 CHEV 4500** DURAMAX SERVICE BODY TRUCK, AUTO, 13' BODY W/RACK, AUX. FUEL TANK, LIFT GATE, ODOMETER READS: 269,839, S/N: 1GBE4C1286F408140

**2006 CHEV 2500HD** EXTENDED CAB SERVICE BODY TRUCK, V8, AUTO, RACK, 8' BODY, ODOMETER READS: 353,424, S/N: 1GBHC29U36E180764

**2020 GMC 2500HD** CREW CAB 4X4 UTILITY TRUCK, V8, AUTO, 8' BODY W/RACK, ODOMETER READS: 84,834, S/N: 1GD19LE75LF229207

**2011 GMC 2500HD** DURAMAX CREW CAB 4X4 UTILITY TRUCK, AUTO, 8' BODY, ODOMETER READS: 213,392, S/N: 1GC1KXC84BF107688

**INTERNATIONAL 4900** S/A CAB & CHASSIS, DT466, 7 SPD, 187" WHEEL BASE, PTO, DOUBLE FRAME, HOUR METER READS: 36,477

**2003 ISUZU NPR** CAB/OVER VAN TRUCK, DIESEL, SIDE BOXES, S/N:JALC4B14937011474



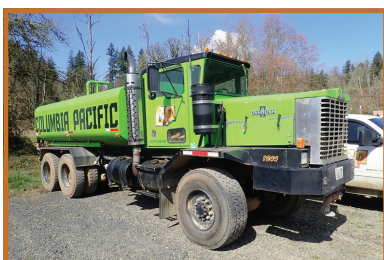
**REGISTER TO BID @ MURPHYAUCTION.COM**



2016 KENWORTH T800



1997 KENWORTH W900



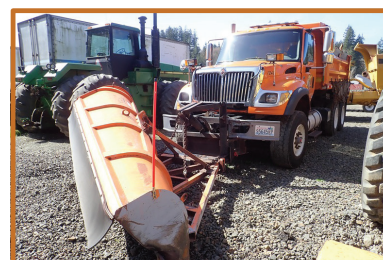
1985 OSHKOSH 6X6



2019 KENWORTH T800



2009 KENWORTH T800



2003 INTERNATIONAL 7600



1988 KENWORTH T800



2000 FREIGHTLINER FL70



2020 GMC 2500HD



2006 KENWORTH T300



# PUBLIC ONLINE AUCTION - WOODLAND, WA

**TRAILERS:**  
**2019 ASPEN HHT/RL TRI/A LOWBOY** 55 TON TRI-AXLE DETACHABLE NARROW NECK LOWBOY, 8' 6"X24' 6" DECK, OUT RIGGERS, SELF CONTAINED POWER UNIT, 2019 ASPEN LDD/CRC S/A BOOSTER, S/N:2A9LB553XKN125051 (LOWBOY), S/N:2A9TD1010KN125052 (BOOSTER)  
**(2) 2016 CROSS COUNTRY** QUAD AXLE SIDE DUMP TRAILERS, REAR LIFT AXLE, PUSH BLOCK, AIR SUSPENSION, S/N'S: 2C9SBX424GM183935 & 2C9SBX42XGM183731  
**2001 WHEELER** 14' SPREAD AXLE PUP TRAILER, SPRING SUSPENSION, EXTENDABLE REACH, S/N: 1W9PNDL231M011059  
**1994 HAUL ALL** 15' TRI-AXLE PUP TRAILER, SPRING SUSPENSION, EXTENDABLE REACH, S/N: OR56804  
**2017 OLYMPIC 30TDT-3** TRI-AXLE TILT BED EQUIPMENT TRAILER, 8' 6" X 27' DECK (4' STATIONARY), D-RINGS, 215/75R17.5, 9' AXLE SPREAD, S/N: 1C9TT3635T997094  
**2015 TRAILING TKT124** T/A TILTBED EQUIPMENT TRAILER, 6' 9" X 20 DECK (4' STATIONARY), 235/85R16, S/N: 1TKU02020FR037075  
**1998 LINCOLN LLTR** T/A LOG TRAILER, S/N: 1L9L02620W1104213  
**DITCHWITCH S7B** S/A TILTBED EQUIPMENT TRAILER  
 T/A PRESSURE WASHER TRAILER, LANDA PG4-3500 PRESSURE WASHER, 500 GALLON POLY TANK, S/N: 0396  
**2001 ASPHALT ZIPPER AZ-480** 48" ASPHALT GRINDER WITH T/A TRAILER, S/N: 0774  
**2011 LINCOLN COMMANDER 500** TRAILER MOUNTED WELDER, HOUR METER READS: 5,050, S/N: 4GNFU1225BB027209  
**IDAHO NORLAND** S/A STRAW BLOWER  
**2013 DOOSAN C185WKUB-T4I** 185 CFM TRAILER MOUNTED AIR COMPRESSOR, HOUR METER READS: 3,317, S/N: 3698  
**INGERSOLL RAND P185** TRAILER MOUNTED AIR COMPRESSOR, HOUR METER READS: 1,437  
**2014 ALLMAND NIGHT-LITE PRO II** TRAILER MOUNTED LIGHT TOWER, HOUR METER READS: 2,785, S/N: 1128PR0214  
**2007 WANCO WTMMB** TRAILER MOUNTED MESSAGE BOARD, S/N: 5F12S161171005168  
**2000 ISOMETRICS** 8,000 GALLON T/A FUEL TRAILER, S/N: 523T8002  
**2005 PEERLESS 53-DC** QUAD AXLE CHIP TRAILER (FLOOR NEEDS WORK, MISSING SOME WHEELS), S/N: 1PLE053445PJ54047  
**1984 TRAILMOBILE** S/A APPROX. 30' VAN TRAILER, S/N: 1PT07DRE4E9009712  
**1990 TRAILMOBILE** T/A APPROX. 48' VAN TRAILER, S/N: 1PT017AJ5L9009600

**PICKUPS:**  
**2015 CHEV 2500HD** CREW CAB 4X4 PICKUP TRUCK, V8, AUTO, ODOMETER READS: 163,677, S/N: 1GC2KUEG2FZ144010  
**2015 CHEV SILVERADO 1500** CREW CAB 4X4 PICKUP TRUCK, V6, AUTO, ODOMETER READS: 50,813, S/N: 3GCUKPEH7FG491738  
**2018 GMC 2500HD DURAMAX** CREW CAB 4X4 PICKUP TRUCK, AUTO (NO REAR BUMPER), ODOMETERS READ: 105,874, S/N: 1GT12REY1JF142101  
**2016 GMC SIERRA 1500** 4X4 PICKUP TRUCK, V8, AUTO, ODOMETER READS: 119,670, S/N: 1GTN2LEC0GZ307579  
**2018 GMC SIERRA 1500** CREW CAB 4X4 PICKUP TRUCK, V8, AUTO, ODOMETER READS: 43,647, S/N: 1GTV2LEC3JZ300620  
**2008 CHEV SILVERADO 1500** 2WD PICKUP TRUCK, V8, AUTO, PROTECH HEADACHE RACK & TRUCK BOX, ODOMETER READS: 279,022, S/N: 1GCEC14C58Z122349  
**2008 CHEV SILVERADO 1500** 2WD PICKUP TRUCK, V8, AUTO, ODOMETER READS: 312,659, S/N: 1GCEC14C08Z106723

**EQUIPMENT & INVENTORY:**  
**ALLIED HOE** PACK  
**KELLO-BILT 275** OFFSET DISC (DISCS NOT ATTACHED), S/N: WM091567  
 (25) EXCAVATOR BUCKETS, ROLLER PADS, RIPPER, COMPACTION WHEEL ATTACHMENT, PALLET RACKING, WELDER, AIR COMPRESSORS, TRUCK BOXES, REELS, JOBSITE SUPPLIES, COMPACTORS, JUMPING JACKS, BLOWERS, HAND TOOLS, SIGNS, CONES, BARRELS, STANDS, SHOP SUPPLIES  
 544 BROOM ATTACHMENT  
 SELF CONTAINED SNOW BLOWER, DIESEL, S/N:P3-1176 (FITS 744)  
 (5) TRENCH BOXES & GRAVEL SKID  
 20' CONTAINER  
 (3) 40' CONTAINERS  
**AND MUCH MORE!**



2016 CROSS COUNTRY



2016 CROSS COUNTRY



2017 OLYMPIC 30TDT-3



2000 ISOMETRICS



2018 GMC 2500HD



2018 GMC SIERRA 1500



2006 CHEV 4500



2011 GMC 2500HD



2018 GMC 3500HD



2012 CHEV 3500HD