

**JG M NO MINIMUMS - NO RESERVES JG M**

# PUBLIC AUCTION



**DATE: 9:00 AM | THURSDAY - NOVEMBER 8**

**PREVIEW 8:00 AM TO 4:00 PM | WEDNESDAY, NOVEMBER 7**

**7829 S. 206TH STREET, KENT, WA 98032**

**★ ★ ★ RETIRING AFTER 41 YEARS ★ ★ ★**

**HEAVY EQUIPMENT, CONTRACTORS EQUIPMENT  
& CONCRETE FINISHING EQUIPMENT**



**2002 JOHN DEERE 650H LT**



**1997 CAT 938F**



**2004 FL COLUMBIA 120**



**1985 CAT 130G**



**1997 KOMATSU PC300LC-5**

**James G. Murphy Co.**  
Commercial & Industrial Auctioneers



**1.800.426.3008 - 425.486.1246**  
***murphyauction.com***



# PUBLIC AUCTION

## 9AM - THURS - NOV. 8

### DPK INC GENERAL CONTRACTORS



**BLASTRAC USF EBE350  
SHOTBLASTER & VACUUM**



**James G. Murphy Co.**

Commercial & Industrial Auctioneers  
P.O. Box 82160, Kenmore, WA 98028

PRESORTED  
FIRST CLASS MAIL  
U.S. POSTAGE  
**PAID**  
SEATTLE, WA  
PERMIT NO. 963

**NO MINIMUMS • NO RESERVES  
BID LIVE OR BID ONLINE**



**James G. Murphy Co.**

Commercial & Industrial Auctioneers

# PUBLIC AUCTION



**GENERAL CONTRACTING**

**DATE: 9:00 AM | THURSDAY - NOVEMBER 8**

**PREVIEW 8:00 AM TO 4:00 PM | WEDNESDAY, NOVEMBER 7**

**7829 S. 206TH STREET, KENT, WA 98032**

**★ ★ ★ RETIRING AFTER 41 YEARS ★ ★ ★**

**HEAVY EQUIPMENT, CONTRACTORS EQUIPMENT  
& CONCRETE FINISHING EQUIPMENT**

**FOR MORE INFORMATION GO TO [MURPHYAUCTION.COM](http://MURPHYAUCTION.COM) • PHONE 425.486.1246**



# 9AM - THURS - NOV 8



1993 KOMATSU PC200LC-5



1999 KOMATSU PC120-6E



1990 KOMATSU PC120



1986 KOMATSU PC120-3



1990 CASE 580K



1990 CASE 580K



1990 CASE 580K



1978 CASE 580C



1989 CAT 950E



1979 RAYGO 320



1998 BOMAG BW118AD



ROSCO RB48



1979 CAT V180B



1990 LAYMOR 8B



1991 BEALL



1991 BEALL



1986 BEALL



1986 BEALL

BID LIVE OR BID ONLINE



# NO MINIMUMS - NO RESERVES



**BLAZER 10'X32'**



**BLAZER 10'X32'**



**1993 DW 3500DD**



**1993 DW 3500DD**



**WELLS CARGO**



**1993 STRICK**



**2001 GREAT DANE**



**1972 BROWN**



**2004 FREIGHTLINER M2**



**1978 MACK RD686S W/TEREX BT3000**



**2004 CHEV 1500**



**1999 CHEV 1500**



**1999 CHEV 3500HD**



**1990 CHEV 3500**



**1991 MACK RD688S**



**1991 MACK RD688S**



**2000 CHEV 3500**



**1984 CHEV 3500**

**1.800.426.3008 - 425.486.1246 - [murphyauction.com](http://murphyauction.com)**



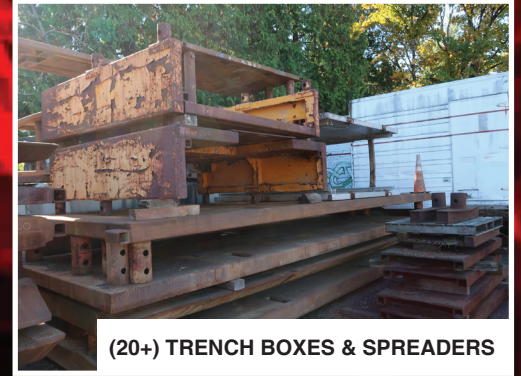
# 9AM - THURS - NOV 8



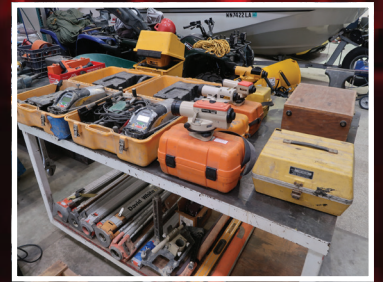
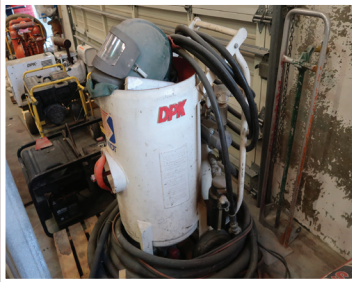
1991 TRAILING 20 TON



(90+) STEEL ROAD PLATES



(20+) TRENCH BOXES & SPREADERS



## TERMS AND CONDITIONS

**10% BUYERS PREMIUM ON ALL ITEMS**  
**15% BUYERS PREMIUM ON ALL ONLINE PURCHASES**

**DUE TO INSURANCE AND SAFETY REASONS, CHILDREN UNDER 12 CANNOT BE ADMITTED**

**PAYMENT:** FULL PAYMENT MUST BE MADE BY THE CLOSE OF BUSINESS AUCTION DAY. CASH, CASHIERS CHECK, WIRE TRANSFER, MASTERCARD OR VISA ONLY. CHECKS ARE ACCEPTED ONLY WITH BANK LETTER OF GUARANTEE.

**REMOVAL:** CUSTOMERS ARE RESPONSIBLE FOR REMOVING THEIR ITEMS FROM THE AUCTION SITE. NO PURCHASES MAY BE REMOVED DURING THE AUCTION UNLESS ANNOUNCED BY THE AUCTIONEER. NO PURCHASES MAY BE REMOVED UNTIL ALL PURCHASES ARE PAID FOR. ALL ITEMS MUST BE REMOVED BY 4:00 PM, THURSDAY, NOVEMBER 15TH.

**REMOVAL HOURS:** ONE HOUR AFTER THE AUCTION OR BETWEEN 8:00 AM - 4:00 PM, FRIDAY, NOVEMBER 9TH THROUGH FRIDAY, NOVEMBER 15TH. NO WEEKEND OR HOLIDAY REMOVAL.

**COMPLETE TERMS AND CONDITIONS OF SALE WILL BE AVAILABLE AT THE TIME OF SALE. FOR COMPLETE RULES REGARDING ABSENTEE BIDS CALL OUR OFFICE OR INQUIRE AT THE AUCTION SITE.**

**BID LIVE OR BID ONLINE**





**ADDITIONAL ITEMS NOT PICTURED:  
FOR MORE DETAILS VISIT OUR NEW WEBSITE  
MURPHYAUCTION.COM**

1985 HITACHI UH16 HYDRAULIC EXCAVATOR  
1979 CAT V180B 18,000 LB FORKLIFT  
1984 - 1999 CHEV 3500 FLATBED UTILITY TRUCKS  
1981 FORD F700 S/A MECHANICS TRUCK  
1980 GMC 7000 S/A FLATBED DUMP TRUCK  
FORD F600 S/A FLATBED DUMP TRUCK  
1973 FORD 600 COE FUEL TRUCK  
1973 TEMPTTE 48' T/A VAN TRAILER  
UTILITY 27' S/A VAN TRAILER  
1972 BROWN 30' S/A VAN TRAILER  
(2) 2004 SOLAR TECH MESSAGE BOARDS  
(2) 1999 ALLMAND ECLIPSE ARROW BOARDS  
1992 BEMIS PORTABLE ARROW BOARD  
1993 INGERSOLL RAND 185 AIR COMPRESSOR  
SULLAIR 185 AIR COMPRESSOR  
SULLAIR 100 AIR COMPRESSOR  
2 STAGE AIR COMPRESSOR  
2010 LEE BOY 150/250 PORTABLE TACK TANK  
GILCREST 413 PAVER BOX  
WELLS CARGO 6' X 10' S/A CARGO TRAILER  
MULTIQUIP S/A TRAILER  
(4) 1999 - 2004 CHEV 1500 4X4 PICKUPS  
2002 CHEV TAHOE LS 4X4 SUV, V8, AUTO  
1998 OLDSMOBILE INTRIGUE SEDAN  
RAMMER 11,000 HYDRAULIC HAMMER  
ROCKHOUND 40EXHD BRUSH CUTTER  
2011 RUWAX DS2720 VACUUM SYSTEM  
MULTIQUIP 45 KVA GENERATOR  
MGM 45 KVA TRANSFORMER  
GREEN MACHINE 414RS WAREHOUSE SWEEPER  
ENGINEERED 8'X17' DEEP DITCH TRENCH FRAME  
2011 HUSQVARNA PG820 FLOOR POLISHER  
WELDCO BEALLS 60" DIGGING BUCKET  
WELDCO BEALLS 39" DIGGING BUCKET  
(5) TEMPTTEST FANS  
(4) HYDRAULIC HAMMERS  
(3) HOE PACS  
5' X16' & 7'X14' BEDDING BOXES W/WHEELS  
6' X 6' TRENCH BOX  
10' X 4' MANHOLE BOX  
EFFICIENCY ARCH SPREADER  
ASSORTED BACKHOE BUCKETS  
12"-36" BACKHOE & EXCAVATOR BUCKETS  
(30+) TRENCH BOXES  
8' X 20' SHORING PLATES, T-1 MATERIAL  
1900 LF OF SPREADER PIPE 8" SCH. 80  
(2) FLOOR GRINDER/POLISHERS  
DIESEL FUEL TANK W/PUMP  
FUEL TANK W/PUMP  
20' STORAGE CONTAINER W/SIDE ROLL UP DOORS  
MOIL POINTS  
BACKHOE FORKS  
BRUSH RAKE  
CLAMP ON MATERIAL FORKS  
(4) 4' X 20' X 12" CRANE MATS  
(250+) ECOLOGY BLOCKS  
(4) 14-1/2"X14-1/2"X30' I-BEAMS  
LARGE ASSORTMENT OF DUCTILE PIPE

(16) 12' K-RAILS  
BASIN LIDS/COVERS  
1"X 6" X 14' T&G BOARDS  
4" & 5" FIBERGLASS PIPE SWEEPS  
(2) CONCRETE BUCKETS  
ASPHALT TRENCH PAVER  
(3) SECTIONS OF PALLET RACKING  
(3) LIGHT POLES  
PIPE LASER, SURVEY EQUIPMENT, CHOP SAW,  
MIKASA PLATE COMPACTOR, WACKER TRASH  
PUMP, STIHL CUTOFF SAW, ROAD SIGNS, CANDLE  
STICKS, CONES, BARRICADES, STANDS, RACKS,  
GROUP OF STIHL SAWS, GRINDERS, CONTRACTORS  
SUPPLIES, SURVEY EQUIPMENT, STIHL CHAIN  
SAW, (3) CONCRETE MIXERS, GENERATOR, CORE  
DRILL W/STAND, BANDING MACHINE, AIR MOVER,  
JUMPING JACK, GENERATORS, TEST EQUIPMENT,  
SUB PUMP W/HOSE, BANDSAW, FLOOR GRINDER,  
FLOOR JACK, ENGINE HOIST, JACK STANDS, TIRE  
JACK, LINCOLN WELDER, WACKER GENERATOR,  
BLAST POT & HOSE, WACKER HP50 SCREED  
W/HONDA 5.5HP, CONCRETE TOOLS, PIPE  
TEST PLUGS, 4"X6"X8' TIMBERS, LUNCH ROOM  
FURNITURE, DESKS, OFFICE EQUIPMENT, FILE  
CABINETS, CHAIRS AND MUCH MORE!

**MURPHYAUCTION.COM**  
**4 2 5 - 4 8 6 - 1 2 4 6**



**ONLINE  
BIDDING  
AVAILABLE**



**1976 CAT 950B**

**FOR MORE INFORMATION GO TO MURPHYAUCTION.COM • PHONE 425.486.1246**