

PUBLIC AUCTION - **HARDWARE STORE**

6142 CRATER LAKE AVE., CENTRAL POINT, OR 97502



1999 INTERNATIONAL 4900



James G. Murphy Co.

Commercial & Industrial Auctioneers
P.O. Box 82160, Kenmore, WA 98028

PRESORTED
FIRST CLASS MAIL
U.S. POSTAGE
PAID
SEATTLE, WA
PERMIT NO. 963



**ONLINE
BIDDING
AVAILABLE**

NO MINIMUMS - NO RESERVES

PUBLIC AUCTION

ECONOMY PLYWOOD

**LUMBER YARD, HARDWARE STORE, ROLLING STOCK
-LIVE AUCTION-**

9:00 AM WEDNESDAY - JULY 31

PREVIEW 8AM-4PM TUESDAY, JULY 30

6142 CRATER LAKE AVE., CENTRAL POINT, OR 97502

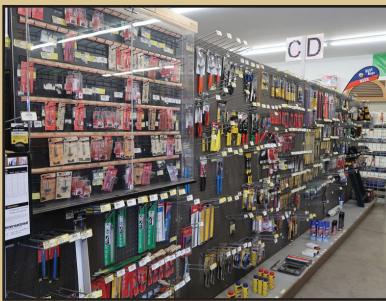
James G. Murphy Co.

Commercial & Industrial Auctioneers



BID LIVE OR ONLINE
MURPHYAUCTION.COM

1.800.426.3008 - 425.486.1246 - find us on facebook!



ROLLING STOCK:

1999 INTERNATIONAL 4900 4X2 DUAL WHEEL TILT DECK FLATBED TRUCK, INTERNATIONAL DIESEL ENGINE, MANUAL TRANSMISSION, 20' FLATBED W/HEADACHE RACK, 18' TILT BED, PTO, DUAL FUEL TANKS, TRUCK BOX , ODOMETER READS: 99,897

2000 FORD F250 EXTENDED CAB 2WD PICKUP, 5.4L TRITON GAS ENGINE, AUTO TRANSMISSION, TRUCK RACK & TOOLBOX , ODOMETER READS: 91,092, S/N: 1FTNX20L6YEC95157

HYSTER CHALLENGER 250 25,000 LB CAPACITY FORKLIFT, DIESEL ENGINE, 2-SPEED AUTO TRANSMISSION, APPROX 212" 2-STAGE MAST W/8"X52" FORKS, DUAL PNEUMATIC TIRES, S/N: C7P3291A

HYSTER H80XL APPROX 8,150 LB CAPACITY FORKLIFT, PROPANE, 145" 2-STAGE MAST W/SIDE SHIFT, 8"X46" FORKS, PNEUMATIC TIRES, HOUR METER READS: 3,605, S/N: F005D05250M

HYSTER H80E 8,000 LB CAPACITY FORKLIFT, PROPANE, 169.3" 2-STAGE MAST, 7"X47" FORKS, PNEUMATIC TIRES , HOUR METER READS: 2,686, S/N: D005D02835E

SHOP TOOLS & EQUIPMENT:

NORTHFIELD 36" VERTICAL TILT TABLE BANDSAW W/5 HP/900 RPM MOTOR, S/N:741-809F, MILWAUKEE 4'X8' PANEL SAW W/8" SAW, IRVINGTON 16" RADIAL ARM SAW, 16"X12' BELT CONVEYOR W/GEARHEAD MOTOR, (3) 10" CHOP SAWS, 1 HP DUST COLLECTOR, MAKITA LS1 12" COMPOUND MITER SAW, DELTA SHOPMASTER 10" MITER SAW, PROJECT PRO 10" MITER SAW, MILWAUKEE 12 AMP SAWZALL, DEWALT DWE5010 1/2" HAMMER DRILL (UNUSED IN BOX), (2) WERNER 8' FIBERGLASS STEP LADDERS, HONEYWELL I-CLASS MARK II LABEL PRINTER, PERFORMANCE 040 SERIES KEY MACHINE, HARBIL 12-STATION PAINT COLORANT DISPENSER, HARBIL G8 HIGH SPEED PAINT MIXER, HARBIL 5G-HD MIXER, COLOR RESOURCES MIXER, (1) 6-TRAY & (2) 5-TRAY ROTARY PARTS BINS, BOLT BINS, NUMEROUS SMALL WOOD BUILDINGS

HARDWARE STORE & WOOD INVENTORY:

TREATED & UNTREATED LUMBER, PLYWOOD, MDF, FLAKEBOARD, MOULDING LATTICE, WINDOWS, SCREENS, SHEET ROCK, PLASTIC PIPE, GUTTERS, 3TAB & ROLLED ROOFING, FLASHING, INSULATION, SAND, WOOD PELLETS, STAKES, PAINT, NUTS, BOLTS, SCREWS, NAILS, WASHERS, STRAPPING, ANCHORS, FASTENERS, POWER & HAND TOOLS, CONSUMABLES, DOOR & WINDOW HARDWARE, ELECTRICAL, LAWN & GARDEN, PIPE, FITTINGS, PAINTING ACCESSORIES, SHELVING, OFFICE EQUIPMENT & SUPPLIES

EQUIPMENT LOCATED OFFSITE:

APPROX 10' DIA X 31'L HORIZONTAL STEEL TANK W/CRADLES (EQUIPMENT LOCATED OFF-SITE APPROX 3 MILES FROM AUCTION SITE. PLEASE CALL FOR PREVIEW, OWNER WILL LOAD THESE ITEMS)

APPROX 8' DIA X 20'L APPROX 6,500 GALLON SKID MOUNTED STEEL TANK (EQUIPMENT LOCATED OFF-SITE APPROX 3 MILES FROM AUCTION SITE. PLEASE CALL FOR PREVIEW, OWNER WILL LOAD THESE ITEMS)

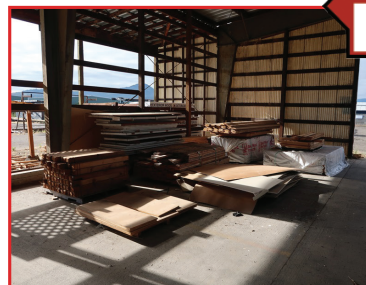
APPROX 90" DIA X 96"H STEEL TANK (EQUIPMENT LOCATED OFF-SITE APPROX 3 MILES FROM AUCTION SITE. PLEASE CALL FOR PREVIEW, OWNER WILL LOAD THESE ITEMS)

APPROX 7' X7' X 12-1/2' BOLT-TOGETHER STEEL FRAME W/14' I-BEAM (FOR TROLLEY, EQUIPMENT LOCATED OFF-SITE APPROX 3 MILES FROM AUCTION SITE. PLEASE CALL FOR PREVIEW, OWNER WILL LOAD THESE ITEMS)

VINYL COVERED 4"X4"X8' STEEL POSTS & 2"X6"X16' RAILS (EQUIPMENT LOCATED OFF-SITE APPROX 3 MILES FROM AUCTION SITE. PLEASE CALL FOR PREVIEW, OWNER WILL LOAD THESE ITEMS)

42"W X 11' & 14'L INSULATED COOLER PANELS (EQUIPMENT LOCATED OFF-SITE APPROX 3 MILES FROM AUCTION SITE. PLEASE CALL FOR PREVIEW, OWNER WILL LOAD THESE ITEMS)

AND MUCH MORE!!!



James G. Murphy Co.

Commercial & Industrial Auctioneers
18226 68TH AVENUE NE, KENMORE, WA 98028
425.486.1246 - MURPHYAUCTION.COM

MURPHYAUCTION.COM
FOR TERMS AND
ADDITIONAL INFORMATION