



PUBLIC ONLINE AUCTION



James G. Murphy Co. - 425.486.1246 - Murphyauction.com

FODGE PULP INC. - ONLINE AUCTION

Whole Log Chipping Facility

Start Date: 11:00 AM | Wednesday - September 14

End Date: 11:00 AM | Wednesday - September 21

Preview 8:00 AM to 4:00 PM | Tuesday, September 20

Location: 6683 Cow Creek Rd., Bonners Ferry, ID 83805



1988 KOMATSU WA600-1L

(MOUNTED ON LOG DECK)



PETERSON DDC-5000G FLAIL DEBARKER



NICHOLSON 27" 6-ARM RING DEBARKER

(REBUILT 1,250 HP-MOTOR)



(2) BLACK CLAWSON 6'X12' 2-DECK CHIP SCREENS

murphyauction.com



425.486.1246

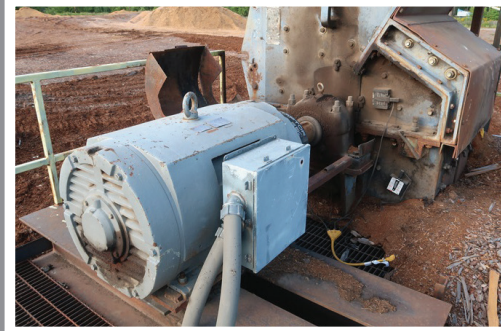
NO MINIMUMS - NO RESERVES



PRENTICE HYDRO AX 180D



BLACK CLAWSON 116" 6-KNIFE



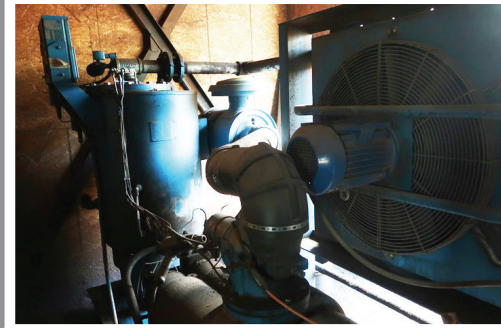
JEFFREY 42X36B



30" RE-CHIPPER W/40 HP MOTOR



2004 WESTERN PNEUMATICS



1990 QNW 740B

STATIONARY LOG LOADER

PRENTICE HYDRO AX 180D REMOTE OPERATED HYDRAULIC STATIONARY LOG LOADER W/75 HP MOTOR, S/N: 39515

DEBARKERS

NICHOLSON 27" 6-ARM RING DEBARKER W/APPROX. 100 HP RING DRIVE MOTOR, AIR SEAL, (4) INFEED & (4) OUTFEED ROLLS, SUPPORT EQUIPMENT

PETERSON DDC-5000G HYDRAULIC OPERATED FLAIL DEBARKER (MOUNTED ON LOG DECK), DUAL FLAIL STATIONS, POWERED FEED THRU ROLLS, 200 HP HYDRAULIC UNIT (ORIGINAL MACHINE WAS IN A FIRE, REMAINDER OF MACHINE AVAILABLE), S/N: 2G58484

WHOLE LOG CHIPPER

BLACK CLAWSON 116" 6-KNIFE WHOLE LOG CHIPPER W/IGGESUND KNIFE CONVERSION, GE 1,250 HP/327 RPM/2,300V (MOTOR REBUILT IN APRIL 2020, INFEED SPIKE ROLL, BEARING OILER, SPARE WEAR PLATES, ANVILS, MOTOTRONICS 1,250 HP SOLID STATE STARTER)

HOG

JEFFREY 42X36B HAMMER HOG, REBUILT TECO 250 HP/1,180 RPM MOTOR, TOP INFEED, BOTTOM DISCHARGE, S/N: 8720574

CHIP SCREENS - RE-CHIPPER

(2) **BLACK CLAWSON 6'X12' 2-DECK** CHIP SCREENS APPROX. 30" RE-CHIPPER W/40 HP MOTOR

BLOWERS - FEEDER

2004 WESTERN PNEUMATICS 42"X36" HIGH PRESSURE CHIP BLOWER W/150 HP MOTOR
APPROX. 30" BLOWER W/50 HP MOTOR
32"X45" CHIP FEEDER W/MOTOR TO SHAFT MOUNTED REDUCER

COMPRESSOR - DRYER - AIR RECEIVER

1990 QNW 740B ROTARY SCREW COMPRESSOR W/150 HP MOTOR, AIR COOLED, ATTACHED ELECTRICS, S/N: 900449

PNEUMATECH EE-500 AIR DRYER, HEAT REACTIVATED REGENERATIVE, 500 SCFM, 150 PSIG, TWIN TOWER, S/N: 986056

ROY HANSON 650 GALLON AIR RECEIVER

SCALES

RICE LAKE 60 TON X 20 LB. LOAD CELL OPERATED TRUCK SCALES W/10'X60' PLATFORM, CONCRETE DECK, CARDINAL DRO & EPSON PRINTER

MILL ELECTRICS

SUNBELT 1,500/1,680 KVA PAD MOUNTED TRANSFORMER, HIGH VOLTAGE 13,200V DELTA, LOW VOLTAGE 2,400Y/1,385V

ALLEN BRADLEY 7-SECTION MCC W/(27) SWITCHES

2009 AUTO DIRECT/SPRECHER & SCHUH PCS 300 HP SOFT START (HOG)

ALLEN BRADLEY 5555 PLC W/(1) ETHERNET IP, (1) DH+R10, (1) DC INPUT MODULE W/ALLEN BRADLEY REMOTE I/O W/(14) MODULES ASSORTED MILL ELECTRICS W/(3) EMERSON UNIDRIVE FREQUENCY DRIVES, WESTINGHOUSE POW-R-LINE PRL-4 PANEL BOARD, ASSORTED STARTERS, DISCONNECTS, WIRE & CONDUIT LOT

CHIP BINS - WIG WAG - TARPING STATION - TRAILER LOADER

(2) APPROX. 30-UNIT HYDRAULIC OPERATED BINS W/20' GATES, HYDRAULIC UNIT

WIG WAG SINGLE HOOD RAIL CAR LOADER W/RAIL WINCH & ELECTRICS
RAIL CAR TARPING STATION
DISMANTLED TRAILER LOADER

LOG DECKS - LOG HAULS - LOG STOP & LOADER

APPROX. 20' 7-STRAND H-CHAIN TREE LENGTH INFEED LOG DECK (BARKERS), H-SHAFT, T-SPROCKETS, MOTOR TO REDUCER DRIVE

15' 8-STRAND H-CHAIN TREE LENGTH LOG DECK

(BARKERS), S-DRIVE, MOTOR TO REX REDUCER DRIVE

14' 10-STRAND H-CHAIN TREE LENGTH LOG DECK

(CHIPPER), 8-ARM LS&L, EURODRIVE GEARHEAD MOTOR DRIVE

15' 7-STRAND H-CHAIN TREE LENGTH LOG DECK

(BARKERS), MOTOR TO REDUCER DRIVE

24"X120' OUTFEED BELT LOG HAUL (FROM NICHOLSON)

W/(5) KICKERS, MOTOR TO REDUCER DRIVE

24"X56' INFEED BELT LOG HAUL (TO NICHOLSON) W/MOTOR TO

REDUCER DRIVE

FLARE 18"X52' INFEED BELT LOG HAUL (TO FLAIL) W/GEARHEAD DRIVE

25' 6"X11-1/2" OUTFEED CHAIN LOG HAUL (FROM FLAIL) W/GEARHEAD DRIVE

75' 6"X11-1/2" OUTFEED CHAIN LOG HAUL (FROM FLAIL) W/GEARHEAD DRIVE

EXCO 50' 15-ARM LOG STOP & LOADER W/SAS 20 HP HYDRAULIC UNIT

1.800.426.3008 - 425.486.1246 - murphyauction.com

PUBLIC ONLINE AUCTION



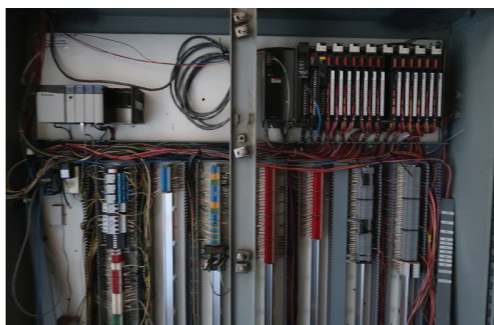
ALLEN BRADLEY



EXCO 50' 15-ARM LOG STOP



18"X60' OUTFEED CONVEYOR



ALLEN BRADLEY 5555



(2) 30-UNIT CHIP BINS



6'X6' SOUNDPROOF CAB

CONVEYORS - MISCELLANEOUS EQUIPMENT

CUSTOM BUILT APPROX. 48"X32' PORTABLE LOADING CONVEYOR, SINGLE AXLE TRAILER MOUNTED, HYDRAULIC DRIVEN W/SEPARATE SINGLE AXLE TRAILER MOUNTED PT DRIVEN HYDRAULIC UNIT
 APPROX. 36"X55' OUTFEED CHEVRON TROUGHING BELT CONVEYOR (FROM CHIPPER), MOTOR TO SHAFT MOUNTED REDUCER (APPROX. 40 HRS USE ON BELT)
 APPROX. 36"X45' OUTFEED CHEVRON TROUGHING BELT CONVEYOR (FROM CHIPPER), MOTOR TO REDUCER DRIVE
 APPROX. 24"X80' BELT CONVEYOR W/SPEED-UP BELT (TO YARD), MOTOR TO SHAFT MOUNTED REDUCER
 APPROX. 18"X60' OUTFEED CONVEYOR (CHIPPER AREA), MOTOR TO FALK REDUCER DRIVE
 APPROX. 75' 6"X11-1/2" BOX CHAIN W/FLITES CONVEYOR (TO HOG), EURODRIVE GEARHEAD DRIVE
 APPROX. 50' 6"X11-1/2" OUTFEED CONVEYOR (BARKERS), EURODRIVE GEARHEAD DRIVE
 APPROX. 36' 6"X11-1/2" OUTFEED CONVEYOR (BARKERS), EURODRIVE GEARHEAD DRIVE
 APPROX. 42' 2-STRAND H78 OUTFEED CONVEYOR W/MOTOR TO REDUCER DRIVE
 NUMEROUS BELT & CHAIN CONVEYORS (NOT INSTALLED)
 6'X6' SOUNDPROOF OPERATORS CAB

ROLLING STOCK - ATTACHMENTS

1988 KOMATSU WA600-1L RUBBER TIRE LOG LOADER W/FORKS, TURBO DIESEL ENGINE, 65.35-33 TIRES, HOUR METER READS: 35,534, S/N: A10091
KOMATSU WA500-1L RUBBER TIRE LOG LOADER W/MEDFORD FORKS (BLOWN ENGINE), 29.5-25 TIRES, S/N: A50244
CAT D6 CRAWLER TRACTOR, CAT TURBO DIESEL ENGINE, 12' PUSH BLADE, 20" SINGLE GROUSER TRACKS, HYSTER D6D WINCH, S/N: 10K899
INTERNATIONAL 1800 SINGLE AXLE FUEL TRUCK, DIESEL ENGINE, MANUAL TRANSMISSION, APPROX. 2,000 GALLON TANK, S/N: AA185KHA15246
 35' TANDEM AXLE LOG TRAILER W/(4) SETS OF BUNKS
PETERSON DDC-5000G PARTS MACHINE (WAS IN A FIRE) W/PRECISION HUSKY 66-23 CHIPPER, S/N: C-2634, CAT 3412 ENGINE (BLOWN), ASSORTED ACCESSORIES, S/N: 2G58484
 ASSORTED ATTACHMENTS TO INCLUDE (2) SETS OF KOMATSU WA500 FORKS, SLIP BUCKET, PUSH BLADE, LOG BUNKS, ASSORTED TIRES



James G. Murphy Co.
 Murphyauction.com
 425.486.1246

TERMS AND CONDITIONS

13% BUYERS PREMIUM ON ALL ITEMS

PAYMENT: Full payment must be made by no later than 5 PM, Thursday, September 22nd. Payment must be made by CASHIERS CHECK, WIRE TRANSFERS OR ONLINE CREDIT CARD ONLY. Checks are accepted ONLY with Bank Letter of Guarantee.

REMOVAL: ALL ITEMS MUST BE REMOVED BY NO LATER THAN 4 PM FRIDAY, NOVEMBER 18th.

REMOVAL HOURS: 8:00 AM – 4:00 PM, Monday through Friday. NO WEEKEND REMOVAL.

Purchased lots are at the buyer's risk. It is the responsibility of the buyer to provide adequate property insurance coverage for the items purchased and buyer's own equipment at the auction site.

WARRANTY DISCLAIMER: ALL SALES ARE FINAL. All items are being sold "As Is, Where Is," With All Faults and without any warranties as to merchantability of fitness for a particular purpose. The principal, the auctioneer, the advertising coordinator, and any of their agents makes no express or implied warranties of any type. Complete terms and conditions of sale will be available at the time of sale. All information was obtained from sources deemed reliable. Although every precaution has been taken to ensure accuracy, the principal, the James G. Murphy Co., the advertising coordinator, and all of their agents shall not be responsible for any errors or omissions therein. It is for this reason that we recommend that all items be thoroughly inspected prior to the point of sale.

1.800.426.3008 - 425.486.1246 - murphyauction.com



James G. Murphy Co.

Commercial & Industrial Auctioneers
P.O. Box 82160, Kenmore, WA 98028

PRESORTED
FIRST CLASS MAIL
U.S. POSTAGE
PAID
SEATTLE, WA
PERMIT NO. 963

CAT D6

CRAWLER TRACTOR, CAT TURBO DIESEL
ENGINE, 12' PUSH BLADE, 20" SINGLE
GROUSER TRACKS, HYSTER D6D WINCH



**REGISTER
TO BID @**
MURPHYAUCTION.COM



PUBLIC ONLINE AUCTION



James G. Murphy Co. - 425.486.1246 - Murphyauction.com

FODGE PULP INC. - ONLINE AUCTION

Whole Log Chipping Facility

Start Date: 11:00 AM | Wednesday - September 14

End Date: 11:00 AM | Wednesday - September 21

Preview 8:00 AM to 4:00 PM | Tuesday, September 20

Location: 6683 Cow Creek Rd., Bonners Ferry, ID 83805



FOR MORE INFORMATION GO TO MURPHYAUCTION.COM • PHONE 425.486.1246