



James G. Murphy Co.
Commercial & Industrial Auctioneers
murphyauction.com - 425.486.1246



PUBLIC ONLINE AUCTION

THE FORMER GEORGIA PACIFIC MILL IN COOS BAY

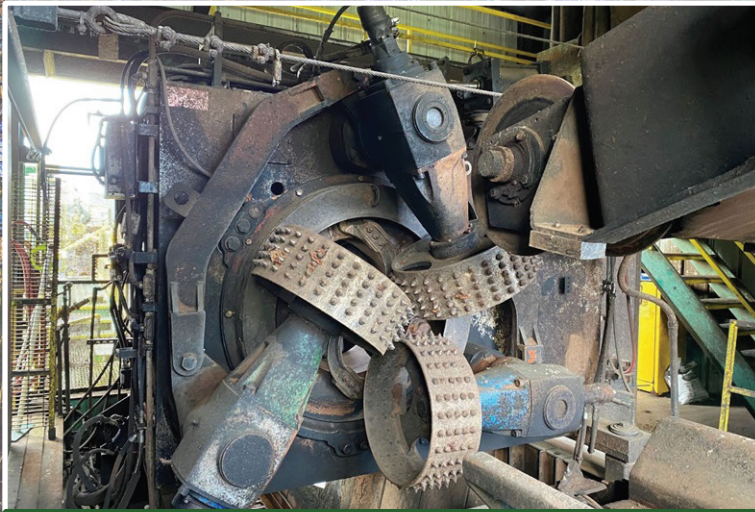


Start Date: 9:00 AM | Wednesday - August 18

End Date: 9:00 AM | Wednesday - August 25

Preview: 8:00 AM to 4:00 PM | Tuesday, August 24

Location: 63779 Mullen Rd., Coos Bay, OR 97420



FORANO



LUCKY L-1020D



STROHM L0-84



JEFFREY 45WB

BID ONLINE AT
MURPHYAUCTION.COM



PUBLIC ONLINE AUCTION
COMPLETE SAW MILL

NO MINIMUMS - NO RESERVES

DEBARKER:

FORANO 30" 6-ARM CAMBIO STYLE DEBARKER, AIR SEAL RING, GE 100 HP/1,185 RPM MOTOR, (3) INFEED & (3) OUTFEED HYDRAULIC DRIVEN FEED ROLLS, FORANO AC-30-110L 15' INFEED CENTERING CONVEYOR, 4"X30" CAPACITY, 300 FPM, LINDSAY 750 GW OUTFEED MODULE W/(2) 35" HYDRAULIC DRIVEN ROLLS, CAB & CONTROLS, SUPPORT HYDRAULICS & ELECTRICS, SPARE PARTS

LOG LOADER:

LUCKY L-1020D LOG LOADER, HYDRAULIC OPERATED, PEDESTAL MOUNT, REMOTE OPERATED, 27' KNUCKLE BOOM W/4145CW SWIVEL GRAPPLE, LINCOLN APPROX. 50 HP MOTOR W/HYDRAULIC PUMP & TANK, S/N: 711961146

WHOLE LOG CUT OFF SAWS:

STROHM L0-84 CUT OFF SAW, 84" INSERT TOOTH SAW, 100 HP MOTOR, LOG HOLD DOWN, APPROX. 48' 4"X5" CHAIN INFEED LOG HAUL W/(3) KICKERS, TOSHIBA 50 HP MOTOR TO REX POLARIS 73 RPM REDUCER, APPROX. 26' 4"X5" CHAIN OUTFEED LOG HAUL W/TOSHIBA 50 HP MOTOR TO REX POLARIS 73 RPM REDUCER, SPARE SAW

DIAMOND BLUE BABE SERIES 965 6' BAR TYPE CUT OFF SAW W/TOSHIBA 20 HP MOTOR, SERING 5 HP HYDRAULIC UNIT, DOUBLE PLATE LOG LIFT, SPARE BARS & CHAINS

STEP FEEDERS & LOG DEALERS:

MAGNUM 43' HYDRAULIC OPERATED STEP FEEDER, 2-SECTIONS W/(4) STEPS, 4"-36" CAPACITY, SHARED HYDRAULICS

(2) PRICE LOG PRO 45' ROTARY LOG INDEXERS W/(9) & (15) ARMS, (2) TOSHIBA 30 HP MOTORS TO (2) BONFIGLIOLI 452:1 REDUCERS

MAGNUM 20' 4-STEP HYDRAULIC OPERATED STEP FEEDER W/12' AIR OPERATED LOG SWEEP, SHARED HYDRAULICS

(2) MAGNUM 18' 4-STEP HYDRAULIC OPERATED STEP FEEDERS, SHARED HYDRAULICS

LOG DECKS - LOG HAULS - LOG BELT:

40' SPLIT DRIVE, 8-STRAND 6-1/2"X6-1/2" CHAIN LOG DECK, S-DRIVE W/(2) MOTORS TO REX REDUCER DRIVES

(2) 20' 5-STRAND 4"X4" CHAIN LOG STORAGE TRANSFER DECKS, S-DRIVE W/DRIVE MOTORS

PRICE LOG PRO APPROX. 80' LOG HAUL W/4-1/2"X4-1/2" CHAIN (FROM BARKER) W/BALDOR SUPER E 50 HP M MOTOR TO BONFIGLIOLI REDUCER, (3) LOG KICKERS W/TOSHIBA 15 HP MOTORS TO 2017 NORD 28 RPM REDUCERS APPROX. 125' 6"X6" CHAIN LOG HAUL (FROM 84" SAW), S-DRIVE W/MOTOR TO REX DRIVE

APPROX. 61' 8"X17" BOX CHAIN LOG HAUL (TO 6' SAW), S-DRIVE, (2) KICKERS, MOTOR TO REX DRIVE

ESCO APPROX. 60' 6"X6" CHAIN LOG HAUL (TO STORAGE DECKS), S-DRIVE W/MOTOR TO REX DRIVE

APPROX. 30' 8"X17" BOX CHAIN LOG HAUL (FROM 6' SAW), (9) LOG STOPS, S-DRIVE, MOTOR TO RED DRIVE

APPROX. 30"X28' LOG BELT TRANSFER (FROM 18' STEP FEEDERS), MOTOR TO REX VENUS DRIVE

PRIMARY LOG BREAKDOWN SYSTEM:

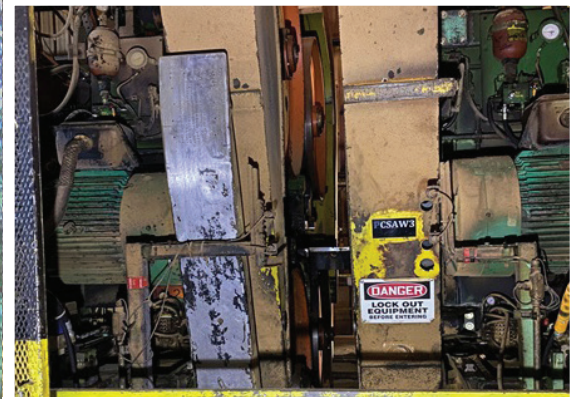
CSMI 6' QUAD HIGH STRAIN BANDMILL SYSTEM, TEMPOSONIC POSITIONING, RELIANCE 150 HP/1,180 RPM/445T FRAME ARBOR DRIVES, DUAL KNURLED FEED THRU ROLLCASES, (2) SIDE ROLLS, BOTTOM SPLINE REMOVABLE HEAD, SUPPORT HYDRAULICS, ELECTRICS, SPARE PARTS & SAWS

(2) 30" TEMPOSONIC POSITIONED SIDE HEAD SLABBERS W/TOSHIBA 200 HP/1,760 RPM MOTORS, 30" TOP HEAD SLABBER, CANCAR BOTTOM SPLINE SLABBER HEAD, ALL DRIVES

USNR/COE NEWNES/MCGEHEE SL3000 INFEED POSITIONING MODULE W/(4) ROLL POSITIONING ROLLS, (10) FLUTED & SPIKED INFEED ROLLS, PNEUMATIC HOLD DOWN ROLLS, POWER TRANSITION ROLLS, ALL ELECTRIC DRIVES ARE MOTOR/REX, SUPPORT HYDRAULICS & ELECTRICS (NO SCANNING)

USNR VEE FLIGHT AUTO ROTATE CONVEYOR W/MOTOR TO REX EARTH 73 RPM REDUCER (NO SCANNING)

APPROX. 26' OUTFEED MODULE W/SHARP CHAIN, (8) 78" ROLLS, (5) HOLD DOWNS, DRIVE



CSMI 6' QUAD BANDMILL



SCHURMAN 4TA30



IRVINGTON MOORE



IRVINGTON MOORE

COMPLETE SAW MILL - COOS BAY, OR

EDGERS - SCANNER:

UKIAH 12"X60" SPLINED TOP & BOTTOM ARBOR GANG EDGER W/(2) TOSHIBA 400 HP/1,770 RPM/505UZ FRAME ARBOR DRIVES, MOTOR TO REDUCER FEED DRIVE, 20' POWERED INFEED ROLLCASE W/(10) 60" ROLLS, 6' 5-STRAND INFEED TRANSFER, 24' 5-STRAND 81X 2-SECTION INFEED TRANSFER W/PIN STOPS, ALL DRIVES, 72"X36' POWERED OUTFEED ROLLCASE, CAB & CONTROLS, SUPPORT HYDRAULICS & ELECTRICS, SPARE SAWS, GUIDES & PARTS

SCHURMAN 8"X42" SPLINED BOTTOM ARBOR BOARD EDGER W/(2) TOSHIBA 300 HP/1,780 RPM/N587UZ FRAME MOTORS, TOSHIBA TO SM CYCLO FEED DRIVE, 24' POWERED INFEED ROLLCASE W/(8) 42" ROLLS, 11' POWERED OUTFEED ROLLCASE W/(5) 42" ROLLS, CAB & CONTROLS, SUPPORT HYDRAULICS & ELECTRICS, SPARE SAWS, GUIDES & PARTS

SCHURMAN 4TA30 SPLINED BOTTOM ARBOR SAWING EDGER W/TOP HEAD CHIPPING SEGMENT, TOSHIBA 250 HP/1,770 RPM/505UZ FRAME MOTOR, MOTOR TO REX FEED DRIVE MOTOR, APPROX. 20' TEMPOSONIC POSITIONED FEED TABLE W/SHARP CHAIN & DRIVE, APPROX. 36"X30' POWERED OUTFEED ROLLCASE W/EDGE PICKER & DRIVE, CONTROL CHAIR, SUPPORT HYDRAULICS & ELECTRICS, SPARE SAWS, GUIDES & PARTS, S/N: 2903

USNR/PERCEPTRON EDGER MAXIMIZER, SCAN 24', PASS 26' W/(6) USNR G26D7D SCANNERS, 5' 7-STRAND 81X & 10' 7-STRAND 81X FEED THRU TRANSFERS, EVEN END ROLLCASE, TIPPLE, UNSCRAMBLER (LOCATED AT SCHURMAN EDGER)

TRIMMERS - SCANNERS - LUG LOADER:

IRVINGTON MOORE 24' LH TRIMMER W/(14) 10 HP INDIVIDUALLY MOTORIZED AIR LIFT SAWS, ZERO SAW, 3-STAGE FENCE, 15' 11-STRAND 81X LUGGED FEED THRU TRANSFER, 12' 9-STRAND 81X LUGGED INFEED TRANSFER W/(6) 9' EVEN END ROLLS, SPARE SAWS & PARTS (SAWMILL), S/N: 21534L

USNR/IRVINGTON MOORE 24' RH TRIMMER W/(13) 10 HP INDIVIDUALLY MOTORIZED AIR LIFT SAWS, ZERO SAW, SINGLE STAGE FENCE, 20' 13-STRAND 81X LUGGED FEED THRU TRANSFER W/(7) 55" EVEN END ROLLS, LUG LOADER, 50' 7-STRAND 81X INFEED TRANSFER W/(7) 55" EVEN END ROLLS, ENGINEERED CORNER, SPARE SAWS & PARTS (PLANER MILL), S/N: 21549RH

USNR/PERCEPTRON 24' TRIMMER SCANNER W/(6) USNR G26D7D SCANNERS, 15' 9-STRAND 81X LUGGED FEED THRU TRANSFER W/36" EVEN END ROLLS (SAWMILL)

2009 CARBOTECH HI-SPEED LUG LOADER W/11' 2-SECTION INFEED TRANSFER W/(9) EVEN END ROLLS, 6"X6' EVEN END BELTS, UNSCRAMBLER (SAWMILL), S/N: 09-038-12

LUCIDYNE M5 COLOR SCAN GRADE READER (PLANER MILL)

IRVINGTON MOORE RH 10-STATION GRADE STAMPER (PLANER MILL), S/N: 21541R

SORTERS - BUILDING - STACKERS:

IRVINGTON MOORE 24' 24-BIN LH J-BAR SORTER W/TOSHIBA 100 HP/1,780 RPM/405T FRAME MOTOR TO REX DELTA 102 RPM REDUCER, 5-STRAND FEED THRU TRANSFER, 45" CENTER-TO-CENTER BINS, (5) REMOTE PANELS, 20' 5-STRAND 81X TAKE AWAY TRANSFER W/5 HP MOTOR TO SM CYCLO REDUCER, (1) 40' & (2) 30' 5-STRAND 81X TAKE AWAY TRANSFERS W/15 HP MOTOR TO SM CYCLO REDUCERS, 25' 11-STRAND 81X LUGGED INFEED TRANSFER W/(10) 16' EVEN END ROLLS, 24' & 22' 6-STRAND 81X INFEED TRANSFERS, HYDRAULIC UNIT W/(3) 40 HP & (2) 30 HP PUMPS (SAWMILL) APPROX. 35'-38'H X 44'W X 120'L ALL STEEL CLEAR SPAN SORTER BUILDING (SAWMILL)

IRVINGTON MOORE 24' 32-BIN RH J-BAR SORTER W/BALDOR 100 HP/1,780 RPM/405T FRAME MOTOR TO 2016 SM CYCLO 15:1 REDUCER, 5-STRAND FEED THRU TRANSFER, 36" CENTER-TO-CENTER BINS, (6) REMOTE PANELS, AUTO LOG TOUCHSCREEN (NO PLC), 24' 5-STRAND 81X TRANSFER W/TOSHIBA 10 HP MOTOR, 56' & 50' 5-STRAND TAKE AWAY TRANSFERS W/TOSHIBA 20 HP MOTORS TO SM CYCLO REDUCERS, 12' 6-STRAND 81X INFEED TRANSFER, 20' 11-STRAND 81X INFEED TRANSFER W/(10) 15' EVEN END ROLLS, 20 HP HYDRAULIC UNIT, SUPPORT ELECTRICS (PLANER MILL)

LUNDEN 24' RH HYDRAULIC OPERATED STACKER, 6' PACKAGE W/6-ARM X 90" LUMBER LOWERING HOIST, (9) LUMBER PLACING ARMS W/RAKE OFF, 17' 6-STRAND 81X INFEED TRANSFER, 10' 6-STRAND 81X INFEED TRANSFER, APPROX. 16' 10-STRAND UNSCRAMBLER W/HYDRAULIC DRIVE, 14' 6-STRAND 81X INFEED TRANSFER, BRAKE W/MOTOR TO SM CYCLO REDUCER, SHARED HYDRAULIC UNIT, SUPPORT CONTROLS & ELECTRICS (SAWMILL)



LARGE ASSORTMENT OF ELECTRICS



MILL POWER



PROGRESS 70



BM&M SCREEN

NO MINIMUMS - NO RESERVES

LUNDEN 24' RH HYDRAULIC OPERATED STACKER W/6-ARM X 60" LUMBER LOWERING HOIST, (6) LUMBER PLACING ARMS W/RAKE OFF, (5) LATH MAGAZINES W/48" LATH, 9' 6-STRAND 81X INFEED TRANSFER, 12' 10-STRAND UNSCRAMBLER, 15' 6-STRAND 81X INFEED TRANSFER, 30' 5-STRAND 81XH OUTFEED TRANSFER W/20' JUMP ROLLCASE W/(6) 60" ROLLS, ALL DRIVES, HYDRAULIC UNIT W/(2) 40 HP MOTORS, SUPPORT CONTROLS & ELECTRICS (PLANER MILL)

HOG - CHIPPERS - SCREEN:

JEFFREY 45WB HAMMER HOG W/TOSHIBA 250 HP/1,780 RPM/505UZ FRAME MOTOR, TOP INFEED, BOTTOM DISCHARGE, APPROX. 30"X8' INFEED GRIZZLY ROLLS, 28"x17' INFEED BELT W/5' TUB, MDI CR85 METAL DETECTOR, APPROX. 135' 8"X15" BOX CHAIN W/FLITES (CONVEYOR TO BIN) W/MOTOR TO REX NEPTUNE REDUCER, SPARE PARTS (SAWMILL), S/N: 12863

PROGRESS 70 CHIPPER W/TOSHIBA 250 HP/1,785 RPM/505UZ FRAME MOTOR, (6) KNIVES W/KEY KNIFE CONVERSION, HORIZONTAL INFEED, BOTTOM OUTFEED, POWER HOOD (UNUSED SPARE HOODS, SPARE KNIVES & PARTS (SAWMILL), S/N: 000082

ARASMITH DRUM CHIPPER 50-50HDC1510-1295 SALVAGER RE-CHIPPER W/TOSHIBA 150 HP/1,770 RPM/FBK-1 FRAME MOTOR, TOP INFEED, BOTTOM OUTFEED, APPROX. 32' 3-STRAND H78 INFEED CONVEYOR, APPROX. 60' 8"X15" BOX CHAIN W/FLITES OUTFEED CONVEYOR (SAWMILL)

NICHOLSON 30" RE-CHIPPER W/TOSHIBA 100 HP/1,185 RPM/444T FRAME MOTOR, TOP INFEED, BOTTOM OUTFEED (SAWMILL)

CHIP SCREEN - VIBRATORY CONVEYORS - METAL DETECTOR:

BM&M 10'X14' 3-DECK CHIP SCREEN, S/N: 15053

MILL POWER 24"-10" X 44' BALANCED VIBRATORY CONVEYOR (TO CHIPPER) W/12' FINES DROP OUT, 4' TUB, MDI CR85 3000 DIGITAL CONTROL CHASSIS, S/N: EV11170 (SAWMILL), S/N: V0634

MILL POWER 24"X125' BALANCED VIBRATORY CONVEYOR (TO CHIPPER), 1" STROKE, 425 RPM (SAWMILL)

MILL POWER 24"X32' BALANCED VIBRATORY CONVEYOR (TO CHIPPER), 1" STROKE, 425 RPM (SAWMILL), S/N: 93552

MILL POWER 24"X56' BALANCED VIBRATORY CONVEYOR, (2) FINES DROP OUT SECTIONS, 5' TUB, MDI CR85 METAL DETECTOR, S/N: 940244 STROKE, 445 RPM (PLANER MILL), S/N: 94551

BINS - DUST COLLECTION EQUIPMENT:

(2) APPROX. 40-UNIT HYDRAULIC OPERATED SHAVINGS BINS W/CROSS TOP CONVEYOR, CYCLONE, 15 HP HYDRAULIC UNIT (PLANER MILL)

(2) PEERLESS APPROX. 30-UNIT HYDRAULIC OPERATED CHIP BINS W/(2) 5 HP HYDRAULICS UNITS (SAWMILL)

USMW 23-UNIT HYDRAULIC OPERATED BARK BIN, APPROX. 5 HP HYDRAULIC UNIT (SAWMILL)

PLANER DUST COLLECTION SYSTEM W/CLARKES APPROX. 40" CBI FAN W/TOSHIBA 200 HP/1,780 RPM/447TZ FRAME MOTOR, FISHER KLOSTER MANXQ-120-42 CYCLONE SYSTEM TO CLARKES 30"X30" ER FEEDER W/MOTOR TO SHAFT MOUNTED REDUCER, STODDARD SILENCER, SUTORBILT GAGAEM 7"X21" BLOWER W/TOSHIBA 50 HP MOTOR, STODDARD 161H-10 SILENCER, HIGH & LOW PRESSURE BLOWPIPE (PLANER MILL), S/N: 4598

CHIP LOADING EQUIPMENT - SCALES:

PEERLESS IN GROUND 50-TON CHIP TRUCK DUMP W/35' DECK, 30 HP HYDRAULIC UNIT, APPROX. 30' 4-STRAND 8"X11-1/2" BOX CHAIN TRANSFER CONVEYOR W/MOTOR TO SM CYCLO REDUCER, CONTROLS & ELECTRICS, SPARE CYLINDER IN SHOP (CHIP FACILITY)

WIG WAG RAILCAR LOADING STATION W/THAYER S521 BELT SCALES, HIGH PRESSURE BLOWPIPE, WINCH, HOOKS & CONTROLS, 72' HOOD, LOYD RAILCAR WINCH (CHIP FACILITY)

FALL PROTECTION SYSTEMS RAILCAR TARPING STATION, APPROX. 200' LONG, 18' BETWEEN STANDS, 12" BOX STEEL BOLT TOGETHER FRAME (CHIP FACILITY) APPROX. 48"X50' COVERED CHEVRON BELT CONVEYOR (TO 150' CONVEYOR) W/DRIVE (CHIP FACILITY)

APPROX. 36"X40' CHEVRON BELT (FROM TRUCK DUMP) W/SKK DRIVE (CHIP FACILITY)

(2) APPROX. 24"X110' COVERED CHEVRON BELT CONVEYORS W/10 HP DRIVES (FROM SAWMILL CHIP BINS)

RADER CC2000 CHIP CLASSIFIER (CHIP FACILITY), S/N: 207

RICE LAKE/METLER TOLEDO LOW PROFILE LOAD CELL TRUCK SCALES, 60-TON X 20 LB. CAPACITY, 10'X70' STEEL & CONCRETE DECK, RICE LAKE 480 LEGEND PLUS DIGITAL READOUT



(2) PEERLESS



PEERLESS



LUNDEN



1995 QNW 241D/A

COMPLETE SAW MILL - COOS BAY, OR

RICE LAKE/FAIRBANKS LOAD CELL, 60-TON X 20 LB. CAPACITY, 10'X70' CONCRETE IN GROUND DECK W/RICE LAKE IQ-710-20 DIGITAL READOUT

PLANER - DEFECT SCANNER - STAIN TUNNEL - RE-ENTRY HOIST:

YATES AMERICAN/S.A. WOODS 409MI PLANER & MATCHER, 6"X15" CAPACITY, (6) HEADS, 18-KNIFE, 125 HP TOP HEAD, 75 HP BOTTOM HEAD, APPROX. 60 HP LEFT SIDE HEAD, 40 HP RIGHT SIDE HEAD, 30 HP TOP PROFILE, 60 HP BOTTOM PROFILE, (4) HYDRAULIC DRIVEN INFEED & (2) HYDRAULIC DRIVEN OUTFEED ROLLS, WATER COOLED LINE BAR, HYDRAULIC UNIT W/(2) 50 HP PUMPS, 5"X18-KNIFE SPARE, 4"X18-KNIFE, (6) 2"X18-KNIFE, (3) 5"X12-KNIFE & (2) 4"X12-KNIFE SPARE HEADS, (20+/-) PALLETS OF ASSORTED SPARE PARTS (PLANER MILL), S/N: 33665

YATES B MODEL 24' HYDRAULIC DRIVEN DUAL PINEAPPLE FEED TABLE W/SLOW DOWN ROLL, (5) 12"X28" SPIRAL & (2) 12"X28" SMOOTH ROLLS, 5' 7-STRAND H78 INFEED TRANSFER, 75 HP HYDRAULIC UNIT (PLANER MILL), S/N: 29683

18" HYDRAULIC DRIVEN LIVE BRIDGE W/(10) 12"X18" CANTED SMOOTH ROLLS (PLANER MILL)

APPROX. 18"X32' COVERED PLANER OUTFEED BELT, 20 HP MOTOR TO AUTO LOG (PLANER MILL)

APPROX. 60"X11' PLANER SLOW DOWN BELT W/MOTOR TO SM CYCLO REDUCER, HYDRAULIC ADJUSTMENT (PLANER MILL)

2012 AUTO LOG UPT2005 LINEAR PLANER MILL OPTIMIZER W/KNOT DETECTION, PASS THRU SYSTEM W/IN & OUTFEED ROLLS, APPROX. 18"X22' OUTFEED BELT W/DRIVE (PLANER MILL), S/N: 20053814-288

APPROX. 22" STAINLESS STEEL PASS THRU STAIN TUNNEL W/IN & OUTFEED ROLLS, (4) AUTO LOG SPRAY POTS (ALL OTHER EQUIPMENT & TANKS REMOVED), APPROX. 18"X90' COVERED INFEED CONVEYOR, 60"X21' OUTFEED BELT (PLANER MILL)

APPROX. 15' 4-ARM X 60" MECHANICAL OPERATED RE-ENTRY HOIST W/14' 5-STRAND 81X INFEED TRANSFER (PLANER MILL)

BANDER - UNIT SAW - DIP TANK:

SAMUEL SLP25(6)VK30 PLASTIC BANDER, VK30 PLASTIC BANDING HEAD (SPARE HEAD) W/MOTORIZED BANDING FEEDER, (4) MAGAZINE BOTTOM BUNK FEEDERS, TOP, BOTTOM & SIDE SQUEEZE, BUMP GATES, (2) HYDRAULIC UNITS, APPROX. 28' & 15' POWERED 60" INFEED ROLLCASES, APPROX. 18' 2-STRAND OUTFEED TRANSFER, ALL DRIVES, SUPPORT ELECTRICS & CONTROLS (PLANER MILL), S/N: A-1598

L&M VERTI-CUT 2000 PACKAGE SAW W/6' BAR, APPROX. 22"X14' CLEAN OUT BELT, 16' 2-STRAND 81X INFEED TRANSFER, (3) BUMP & STOP GATES, SIDE CARRIAGE ROLLS, 12'-40'-28' 2-STRAND 81X TRANSFERS W/ALL DRIVES, 36' 5-STRAND H78 OUTFEED TRANSFER, S-DRIVE W/SKK GEARHEAD MOTOR, SUPPORT CONTROLS & ELECTRICS (PLANER MILL)

2001 EAGLE 6'H X 6'W X 25'L STAINLESS STEEL LINED DIP TANK W/POWERED CARRIAGE & CLAMP, MILD STEEL FRAME, 7-1/2 HP HYDRAULIC UNIT, POLY TANKS, LMI PUMP (PLANER MILL)

COMPRESSORS - DRYERS - AIR RECEIVERS:

1995 QNW 241D/A ROTARY SCREW COMPRESSOR, 50 HP MOTOR, AIR COOLED W/ZEKS OSB1250PG OIL SEPARATOR (SAWMILL), HOUR METER READS: 90,983, S/N: 950538

1994 QNW 245-D ROTARY SCREW COMPRESSOR, 50 HP MOTOR, AIR COOLED (PLANER MILL), HOUR METER READS: 16,897, S/N: 940175

ZEKS NC SERIES 200NCGA400 NON-CYCLING AIR DRYER W/CFX STAINLESS STEEL HEAT EXCHANGER (SAWMILL), S/N: 308458

(2) 2010 ROY E. HANSON 1,550 GALLON, 150 PSIG AIR RECEIVER TANKS (SAWMILL), S/N'S: 440062, 438420

2010 ROY E. HANSON 240 GALLON, 200 PSIG AIR RECEIVER (PLANER MILL), S/N'S: 302428

FILING & GRINDING ROOM EQUIPMENT (SAWMILL):

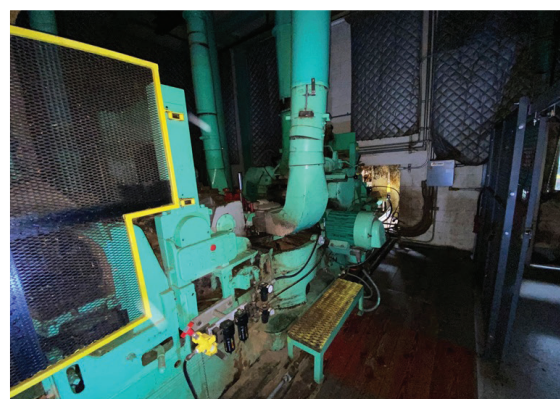
(2) ARMSTRONG PRO-FILER II BANDSAW SHARPENERS W/STANDS, S/N'S: 20188, 20088

(2) ARMSTRONG AUTO TIPPER #85 BANDSAW SHARPENERS W/STANDS, S/N'S: 18226, 17219

(2) ARMSTRONG 3-10C CIRCLE SAW STRETCHER ROLLS, S/N'S: 14659, 11978

ARMSTRONG CIRCLE SAW LEVELER (NOT INSTALLED), S/N: 20207

WESTERN PNEUMATICS 800 SERIES TRAVELING BED KNIFE GRINDER (NOT INSTALLED, LOCATED IN PLANER BUILDING)



YATES AMERICAN/S.A. WOODS 409MI



2012 AUTO LOG UPT2005



USNR/IRVINGTON MOORE



IRVINGTON MOORE

NO MINIMUMS - NO RESERVES

MISC. EQUIPMENT TO INCLUDE: BARNHARDT WHEEL GRINDER, ARMSTRONG #54C HAND SHARPENER, ARMSTRONG TENSION GAUGE GRINDER, BABBIT POT, PRESSES, ANVILS, SPARE BANDSAWS & ROUND SAWS, EDGER GUIDES, CHIPPER & KEY KNIVES

FUEL TANK - CONTAINER - OFFICE TRAILER:

ACE 15,000 GALLON SELF-CONTAINED DUAL FUEL TANK, APPROX. 12'X31',

(2) PUMPS (PLANER MILL)

8'X40' CONTAINER W/8' ROLL UP DOOR, MAN DOOR, BARN DOORS, WINDOWS,

A/C & LIGHTS (SAWMILL)

12'X60' OFFICE TRAILER W/10' ADDITION, BARD UNIT, (3) MAN DOORS, WINDOWS

SHOP - STORES - SPARES:

CRAFTSMAN 5,000-6,250 WATT GENERATOR W/306 CC GAS ENGINE, 120V &

120/240V OUTLETS (BOUGHT NEW IN JUNE 2021), **CRAFTSMAN** 3,500-4,375 WATT

GAS GENERATOR W/196 CC GAS ENGINE, 120V OUTLETS (BOUGHT NEW IN JUNE

2021), (4) **MILLER** PORTABLE GAS WELDER/GENERATORS, (5) **LINCOLN** & **MILLER**

SHOP WELDERS, (2) OXY/ACETYLENE SETS, SHOP PRESS, SANDBLAST CABINET,

DRILL PRESS, 5 HP TANK MOUNTED COMPRESSOR, (5) HAND

BANDERS & CARDS, (8) FAST TAGGERS, SCRAP CHOPPER, (2) **GREENLEE**

CONDUIT BENDERS: (2) FLOOR JACKS, (2) PALLET JACKS, PARTS WASHER,

(3) 10-DRAWER **VIDMAR** TYPE CABINETS, NUMEROUS CHAIN HOISTS TO 5-TONS,

(2) SELF DUMPING HOPPERS, (5) WAREHOUSE LADDERS, NUMEROUS

FLAMMABLES CABINETS, (2) **AMEREX** ROLLING FIRE EXTINGUISHERS,

NUMEROUS HOSE & LUBE REELS, BARREL CART, OIL TANKS, PUMPS, FLOOR

FAN, SAFETY GEAR, NUMEROUS LADDERS, PALLET RACKING, STEEL CABINETS,

PERSONNEL LOCKERS, STEEL RACKS W/INVENTORY

STORES:

MILL STORES & SPARES TO INCLUDE: CHAIN, SPROCKETS, SHEAVES, ROLLS,

VALVES, HYDRAULIC MOTORS & PUMPS, AIR BAGS, CYLINDERS, CHAIN REPAIR

PARTS, SHAFTING, CONVEYOR DRUMS, BELTING, UHMW, GEARS, STEEL STOCK

MILL ELECTRICS (SAWMILL & PLANER MILL):

WIRE & CONDUIT W/7,000+ CONNECTED HP THROUGHOUT MILL SITE

ABB 4-SECTION HIGH VOLTAGE MAIN, 20,800V, 1,200 AMP, WESTINGHOUSE IQ

DATA PLUS II MONITOR, **ABB** TYPE MMCO MULTI-PHASE CURRENT RELAY,

EPOXYCAST HIGH VOLTAGE TRANSFORMER, (3) **GE** TRANQUELL 15 KV SURGE

ARRESTERS, **ALCAD** SERIES AT STANDBY BATTERY STATION, **ABB** 19.0 KV

POWER CIRCUIT BREAKER (LOCATED BY SAWMILL SORTER)

(2) **RTE** 2,500/2,800-3,215/3,500 KVA TRANSFORMERS, 20,800V TO 480Y/277V,

(2) **ABB** VERSA RUPTOR 27 KVA SWITCH PANELS, (2) **ABB** 3-SECTION MAINS

W/(4) 1,200 AMP SWITCHES (LOCATED AT BACK SIDE OF SAWMILL)

(2) **RTE** 2,000/2,240-2,300/2,500 KVA TRANSFORMERS, 20,800V TO 480Y/277V,

(2) **ABB** VERSA RUPTOR 27 KVA SWITCH PANELS, (2) **ABB** 3-SECTION MAINS

W/(4) 1,200 AMP SWITCHES (LOCATED AT SAWMILL LOG DECK & PLANER MILL)

(2) **ABB** 3-SECTION MAINS W/WESTINGHOUSE IQ DATA PLUS II MONITORS

W/(6) 1,200 AMP SWITCHES, HOISTS, SPARE BUCKETS (PROGRESS CHIPPER)

ALLEN BRADLEY 7-SECTION MCC W/(6) SWITCHES, **POWERFLEX** 753 60 HP,

POWERFLEX 700 60 HP, **POWERFLEX** 700 40 HP, **POWERFLEX** 700 30 HP &

POWERFLEX 700 20 HP DRIVES W/TOUCHPADS (BARKER)

ALLEN BRADLEY BULLETIN 2190 6-SECTION MCC W/(9) SWITCHES, (2) **POWER-**

FLEX 700 75 HP, **POWERFLEX** 60 HP, **POWERFLEX** 50 HP & (2) **POWERFLEX** 40 HP

DRIVES W/TOUCHPADS (BARKER)

ALLEN BRADLEY 6-SECTION MCC W/(7) SWITCHES, (1) **POWERFLEX** 700 60 HP,

(2) **POWERFLEX** 40 HP, **POWERFLEX** 7-1/2 HP & **POWERFLEX** 5 HP DRIVES

W/TOUCHPADS (UPSTAIRS SAWMILL)

ALLEN BRADLEY CENTERLINE 2100 2-SECTION MCC W/(6) SWITCHES,

(5) **POWERFLEX** 700 5 HP DRIVES W/TOUCHPADS (SAWMILL TRIMMER)

ALLEN BRADLEY CENTERLINE 2100 4-SECTION MCC W/(19) SWITCHES

(PROGRESS CHIPPER AREA)

ALLEN BRADLEY 3-SECTION MCC W/(7) SWITCHES (TRUCK DUMP AREA)

SIEMENS 95 8-SECTION MCC W/(26) SWITCHES, (1) **POWERFLEX** 50 HP &

POWERFLEX 753 50 HP DRIVES W/TOUCHPADS (BARKER)

SIEMENS 95 7-SECTION MCC W/(23) SWITCHES, (3) **ALLEN BRADLEY** SIZE #5

STARTERS (PLANER ROOM)

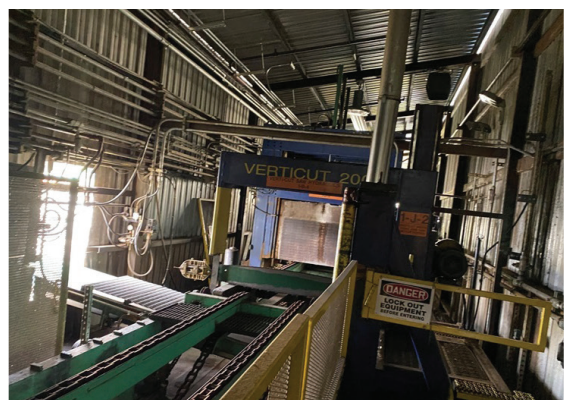
SIEMENS 95 6-SECTION MCC W/(20) SWITCHES, (3) **POWERFLEX** 20 HP DRIVES

W/TOUCHPADS (BARKER)

SIEMENS 95 6-SECTION MCC W/(15) SWITCHES, **ALLEN BRADLEY** SIZE #5, **ALLEN**

BRADLEY SIZE #4 & **POWERFLEX** 700 3 HP DRIVES W/TOUCHPADS (PLANER

ROOM)



L&M



1994 QNW 245-D



(2) ALLEN BRADLEY



ASSORTED SINGULATORS

COMPLETE SAW MILL - COOS BAY, OR

SIEMENS 95 10-SECTION MCC W/(45) SWITCHES
SIEMENS 95 9-SECTION MCC W/(36) SWITCHES
SIEMENS 95 8-SECTION MCC W/(14) SWITCHES
SIEMENS 95 7-SECTION MCC W/(29) SWITCHES
SIEMENS 95 6-SECTION MCC W/(24) SWITCHES
SIEMENS 95 5-SECTION MCC W/(14) SWITCHES
SIEMENS 95 4-SECTION MCC W/(27) SWITCHES
SIEMENS 95 4-SECTION MCC W/(16) SWITCHES
SIEMENS 95 4-SECTION MCC W/(10) SWITCHES
SIEMENS 95 3-SECTION MCC W/(13) SWITCHES
SIEMENS 95 3-SECTION MCC W/(10) SWITCHES
SIEMENS 95 3-SECTION MCC W/(8) SWITCHES

WESTINGHOUSE 2-SECTION MCC W/(10) SWITCHES

(4) ALLEN BRADLEY POWERFLEX 755 DRIVES TO 100 HP W/TOUCHPADS

(20+/-) ALLEN BRADLEY POWERFLEX 753 DRIVES TO 125 HP W/TOUCHPADS

(25+/-) ALLEN BRADLEY POWERFLEX 700 DRIVES TO 75 HP W/TOUCHPADS

(3) BENSHAW 300 HP DCB3-300-480 SOLID STATE MOTOR CONTROLLERS

(2) ALLEN BRADLEY SMC FLEX 150-F108EBD 75 HP SOFT STARTS

ALLEN BRADLEY 5561 PLC W/(6) MODULES, ALLEN BRADLEY PANELVIEW 1000 TOUCHSCREEN (SAWMILL TRIMMER)

(50+/-) SPARE MOTORS & REDUCERS TO 500 HP, SPARE SCAN HEADS, TEMPOSONIC VALVES & WANDS, TRANSFORMERS, STARTERS, BREAKERS, RELAYS, CONTACTS, SWITCHES, PUSH BUTTONS, CONTACT POINTS, COILS, OVERLOADS, PROXIMITY SWITCHES, PRESSURE SWITCHES, CONDUIT & FITTINGS, LARGE WIRE & CONDUIT LOT

CONVEYORS - TRANSFERS:

LARGE ASSORTMENT OF CONVEYORS TO 150', TRANSFERS TO 60', ROLL CASES TO 30' & UNSCRAMBLERS



James G. Murphy Co.

murphyauction.com

425.486.1246



ELECTRICS

TERMS AND CONDITIONS

13% BUYERS PREMIUM ON ALL ITEMS

DUE TO INSURANCE AND SAFETY REASONS, CHILDREN UNDER 12 CANNOT BE ADMITTED

PAYMENT: FULL PAYMENT MUST BE MADE NO LATER THAN 5 PM, THURSDAY, AUGUST 26TH. PAYMENT MUST BE MADE BY ONLINE CREDIT CARD OR WIRE TRANSFER ONLY. AFTER THE AUCTION CLOSING & YOU RECEIVE YOUR EMAILED INVOICE, PLEASE REPLY AND WE WILL CHARGE YOUR CARD ON FILE.

REMOVAL: ITEMS THAT DON'T REQUIRE DISMANTLING MUST BE REMOVED BY 4:00 PM SEPTEMBER 15TH. ITEMS THAT REQUIRE DISMANTLING MUST BE REMOVED NO LATER THAN 4:00 PM, FRIDAY, DECEMBER 17TH.

REMOVAL HOURS: 8:00 AM TO 4:00 PM, MONDAY THROUGH FRIDAY. NO WEEKEND OR HOLIDAY REMOVAL. (PLEASE READ REMOVAL PROCEDURES REGARDING COVID-19 ON OUR WEBSITE).

UPON AWARD OF BID DISMANTLERS TAKE RESPONSIBILITY FOR ANY ENVIRONMENT ISSUES THEY CREATE (E.G. SPILLED HYDRAULIC OIL). DISMANTLERS ARE REQUIRED TO PROVIDE THEIR OWN MATERIALS TO CONTAIN & CLEAN UP ANY OIL SPILLAGE.

INSURANCE: ANYONE REMOVING EQUIPMENT THAT REQUIRES RIGGING, CUTTING, DISMANTLING OR ANY ALTERATIONS TO PORT PROPERTY IS REQUIRED TO PROVIDE \$1,000,000.00 DOLLAR GENERAL LIABILITY INSURANCE CERTIFICATE SHOWING THE JAMES G. MURPHY COMPANY AND NORTHWEST HARDWOODS INC AS THE ADDITIONAL INSURED PARTIES. INSURANCE CERTIFICATE AND PROOF OF WORKERS COMPENSATION COMPLIANCE MUST BE ON FILE AT SALE SITE AND WITH THE JAMES G. MURPHY CO. BEFORE DISMANTLING COMMENCES. PURCHASED LOTS ARE AT THE BUYER'S RISK. IT IS THE RESPONSIBILITY OF THE BUYER TO PROVIDE ADEQUATE PROPERTY INSURANCE COVERAGE FOR THE ITEMS PURCHASED AND BUYER'S OWN EQUIPMENT AT THE AUCTION SITE.

FIRE PROTECTION POLICY: NO CUTTING WITHOUT A PERMIT

Ø DISMANTLERS REQUIRED TO PROVIDE THEIR OWN FIRE HOSE & SPRAY NOZZLES.

Ø A SIGNED BURNING PERMIT ISSUED TO DISMANTLERS WILL BE DISPLAYED IN CUTTING AREA

Ø A LIMITED NUMBER OF BURNING PERMITS WILL BE ISSUED. ONE BURNING PERMIT PER HOSE WHILE CUTTING.

Ø EACH MAN USING A CUTTING TORCH WILL HAVE ONE FIREWATCH WITH A HOSE WHILE CUTTING

Ø FIREWATCH TO WET DOWN BEFORE, DURING AND AFTER CUTTING.

Ø FIREWATCH TO STAY IN AREA ONE HOUR AFTER CUTTING IS COMPLETED

CUTTING HOURS ARE: 8:00 AM – 2:00 PM

WARRANTY DISCLAIMER: ALL SALES ARE FINAL. ALL ITEMS ARE BEING SOLD "AS IS, WHERE IS", WITH ALL FAULTS AND WITHOUT ANY WARRANTIES AS TO MERCHANTABILITY OF FITNESS FOR A PARTICULAR PURPOSE. THE PRINCIPAL, THE AUCTIONEER, THE ADVERTISING COORDINATOR, AND ANY OF THEIR AGENTS MAKE NO EXPRESS OR IMPLIED WARRANTIES OF ANY TYPE.

ADVERTISING DISCLAIMER: ALL INFORMATION WAS OBTAINED FROM SOURCES DEEMED RELIABLE. ALTHOUGH EVERY PRECAUTION HAS BEEN TAKEN TO ENSURE ACCURACY, THE PRINCIPAL, THE JAMES G. MURPHY CO., THE ADVERTISING COORDINATOR AND ALL THEIR AGENTS SHALL NOT BE RESPONSIBLE FOR ANY ERRORS OR OMISSIONS THEREIN. IT IS FOR THIS REASON THAT WE RECOMMEND THAT ALL ITEMS BE THOROUGHLY INSPECTED PRIOR TO THE POINT OF SALE.

ONLINE BIDS: FAILURE TO AWARD BID - ONLINE BIDDERS WILL NOT HAVE ANY CLAIM AGAINST THE JAMES G. MURPHY CO. FOR FAILURE TO SUBMIT BIDS TO THE AUCTIONEER OR ANY ERROR ON THE BIDDING PLATFORM. IN SOME INSTANCES, THE BIDDING PLATFORM MAY SHOW AN ITEM AWARDED TO AN ONLINE CUSTOMER; HOWEVER, WE RESERVE THE RIGHT TO WITHDRAW A BID AWARDED IN ERROR.

FULL LIST OF ITEMS AT MURPHYAUCTION.COM

PUBLIC ONLINE AUCTION

THE FORMER GEORGIA PACIFIC MILL IN COOS BAY



James G. Murphy Co.

Commercial & Industrial Auctioneers
P.O. Box 82160, Kenmore, WA 98028

PRESORTED
FIRST CLASS MAIL
U.S. POSTAGE
PAID
SEATTLE, WA
PERMIT NO. 963



**REGISTER
TO BID @**
MURPHYAUCTION.COM



James G. Murphy Co.

Commercial & Industrial Auctioneers

murphyauction.com - 425.486.1246



PUBLIC ONLINE AUCTION

THE FORMER GEORGIA PACIFIC MILL IN COOS BAY

Start Date: 9:00 AM | Wednesday - August 18

End Date: 9:00 AM | Wednesday - August 25

Preview: 8:00 AM to 4:00 PM | Tuesday, August 24

Location: 63779 Mullen Rd., Coos Bay, OR 97420

