

JG M PUBLIC ONLINE AUCTION JG M

85-1383 WAIANAE VALLEY RD, WAIANAE, HI 96792

2,475 HRS



2013 CAT TL1255C



James G. Murphy Co.

Commercial & Industrial Auctioneers
P.O. Box 82160, Kenmore, WA 98028

PRESORTED
FIRST CLASS MAIL
U.S. POSTAGE
PAID
SEATTLE, WA
PERMIT NO. 963



James G. Murphy Co.

murphyauction.com

425.486.1246

PUBLIC ONLINE AUCTION

HAWAII HEAVY EQUIPMENT & TOOLS

Heavy Equipment, Rolling Stock, Tools & Inventory

Start Date: 10AM HST | Tuesday - January 25

End Date: 10AM HST | Tuesday - February 1

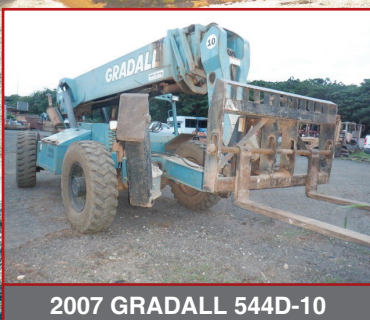
Preview: 8AM to 4PM HST | Monday, January 31

85-1383 Waianae Valley Rd, Waianae, HI 96792

2,167 HRS



2017 CAT 289D



2007 GRADALL 544D-10

1,339 HRS



2007 CAT 236B



1987 KOMATSU PC200LC-6



2008 INTERNATIONAL 7500 SFA



NO MINIMUMS - NO RESERVES



1.800.426.3008 - 425.486.1246 - MURPHYAUCTION.COM

Heavy Equipment, Rolling Stock, Tools & Inventory

NO MINIMUMS - NO RESERVES

HEAVY EQUIPMENT:

2013 CAT TL1255C 12,000LB TELEHANDLER FORKLIFT, C4 DIESEL ENGINE, 4X4, HYDRAULIC LEVELING, OUTRIGGERS, Q/C FORK ATTACHMENT, AUX. HYDRAULICS, HOUR METER READS: 2,475, S/N: DHW00781 (THIS ITEM LOCATED AT 890 LEILANI STREET, HILO - PLEASE CALL FOR PREVIEW)

2007 GRADALL 544D-10 10,000LB TELEHANDLER FORKLIFT, 4X4, HYDRAULIC LEVELING, OUTRIGGERS, JOHN DEERE DIESEL (HOUR METER NOT OPERATIONAL), S/N: 160022855

2017 CAT 289D TRACKED SKID STEER LOADER, HIGH FLOW HYD., A/C, 4-N-1 BUCKET, 2 SPD, HOUR METER READS: 2,167, S/N: PTAW02781

2007 CAT 236B SKID STEER LOADER, QC BUCKET, HOUR METER READS: 1,339, S/N: CAT0236BAHEN06890

2002 DITCH WITCH HT25 TRENCHER, RUBBER TRACKS, BLADE, A225 BACKHOE, DIESEL ENGINE (NEW TRENCHER CHAIN)

1987 KOMATSU PC200LC-6 HYDRAULIC EXCAVATOR, BUCKET, AUX. HYDRAULICS, CAB, S/N: 30134

2012 TAKEUCHI TB153FR MINI EXCAVATOR, RUBBER TRACKS, YANMAR 38HP DIESEL, HOUR METER READS: 3,229, S/N: 158301298

1988 JOHN DEERE 544D WHEEL LOADER, BUCKET, CANOPY, 17.5 TIRES, 6CYL TURBO DIESEL, HOUR METER READS: 1,163, S/N: DW544DD514382

1989 CASE 1550 CRAWLER TRACTOR, DOZER BLADE, MULTI SHANK RIPPER, CANOPY, CUMMINS 6CT TURBO DIESEL, HYDROSTATIC TRANSMISSION, S/N: JAK 0010849

2017 POLARIS RANGER R17RVA87A1 4X4 SIDE BY SIDE UTV, GAS ENGINE, HOUR METER READS: 1,384, S/N: 4XARVA87XH8025184

DYNAPAC VIBRO CA25 84" SMOOTH DRUM VIBRATORY ROLLER, CAT 3208 DIESEL, HOUR METER READS: 1,958, S/N: 839D24

2000 BOMAG BW 9 AS 50" SMOOTH DRUM ROLLER, HOUR METER READS: 1,988, S/N: 109C14603334

WACKER RD11A 35" SMOOTH DRUM TANDEM VIBRATORY ROLLER, 18 HP HONDA GX610, S/N: 5593189

1997 CAT CB534B SMOOTH DRUM VIBRATORY ROLLER, HOUR METER READS: 99, S/N: 4JL00302

CAT CP433B SHEEPSFOOT VIBRATORY ROLLER, CANOPY, HOUR METER READS: 1,887, S/N: 1MG00436

2000 MOFFETT M5000 5,000LB FORKLIFT, LP ENGINE, S/N: 9393

1988 TOYOTA 02-FG35 5,000LB DUAL PNEUMATIC FORKLIFT

2007 JLG 2630ES SCISSOR LIFT, S/N: 200156293 (THIS ITEM LOCATED AT 890 LEILANI STREET, HILO - PLEASE CALL FOR PREVIEW)

TENNANT S30 LP RIDE ON STREET SWEEPER, S/N: 1361

LAYMOR 6HB MOBILE BROOM, 3CYL DIESEL, HOUR METER READS: 449, S/N: 25088

HEAVY TRUCKS:

2008 INTERNATIONAL 7500 SFA T/A 3,000 GALLON FUEL TRUCK, MAXFORCE DIESEL ENGINE, A/T (CURRENT CONFIGURATION IS FOR AVIATION USE), ODOMETER READS: 7,985, S/N: 1HTWPAZRD8J645754

1999 INTERNATIONAL 4900 S/A LUBE TRUCK, DT466 DETROIT DIESEL, A/T, LINCOLN VANTAGE 500 WELDER/GENERATOR, AIR COMPRESSOR, PRODUCT TANKS, HOSE REELS, ODOMETER READS: 22,747, S/N: 1HTSDAANTYH212102

1988 FORD 7000 S/A CAB OVER ROLL BACK TRUCK, 22' JER-DAN DECK, 29,000 GVW, DIESEL, MANUAL TRANSMISSION, ODOMETER READS: 178,971, S/N: 9BFXH70POJDM00055

1998 FORD S/A DUMP TRUCK, 4X4, CAT C10 DIESEL, ODOMETER READS: 79,000, S/N: 1FDYS92K9WVA33697

2003 FORD F450 DUMP TRUCK, POWERSTAKE, ODOMETER READS: 93,640, S/N: 1FDXF46P53ED86216

TRAILERS & TRAILER MOUNTED EQUIPMENT:

MQ WHISPERWATT DCA25US12C TRAILER MOUNTED GENERATOR, 25 KW, ISUZU DIESEL ENGINE, HOUR METER READS: 7,864, S/N: 8104317

2007 AIRMAN 185 S TRAILER MOUNTED AIR COMPRESSOR, 185 PSI, ISUZU DIESEL ENGINE, HOUR METER READS: 2,789, S/N: B46B43894

2014 AIRMAN 185 TRAILER MOUNTED AIR COMPRESSOR, 185 PSI, ISUZU DIESEL ENGINE, HOUR METER READS: 1,281

2011 AIRMAN 185 TRAILER MOUNTED AIR COMPRESSOR, 185 PSI, ISUZU DIESEL ENGINE, HOUR METER READS: 1,599

LINCOLN SHIELD ARC SA250 TRAILER MOUNTED WELDER/GENERATOR, DIESEL ENGINE, S/N: A-1175834

ASPHALT ZIPPER AZ360 TRAILER MOUNTED ASPHALT ZIPPER, 24" DRUM & 36" DRUM

WANCO D-3309 DIGITAL SIGN BOARD (THIS ITEM LOCATED AT 890 LEILANI STREET, HILO - PLEASE CALL FOR PREVIEW)

WANCO Y-4521 LIGHT TOWER, KUBOTA DIESEL, HOUR METER READS: 34, S/N: 53F25C235KB793966

TRI/A TRAILER W/20' STORAGE CONTAINER

THERMO KING T/A 40' REFRIGERATED VAN TRAILER

2018 CHEETA 20' CONTAINER CHASSIS

VEHICLES:

2007 VOLVO V50 4-DOOR SEDAN

2002 CHEVROLET ASTRO PASSENGER VAN

2002 FORD F150 CREW CAB PICKUP, 8' BED, 4.6L GAS ENGINE, A/C

2003 FORD F250 4WD PICKUP, 6.0L DIESEL ENGINE, AUTO, S/N: 1FTNX21PD3EB52411

2000 CHEVROLET 2500 12' FLATBED TRUCK, (PARTS ONLY)

2000 CHEVROLET 2500 14' FLATBED TRUCK, (PARTS ONLY)

2006 CUSHMAN ELECTRIC UTILITY VEHICLE

ASSORTED EQUIPMENT:

ONAN 20DLL334185 GENSET, CUMMINS DIESEL

LANDHONOR AUGER BUCKET, SKIDSTEER Q/C, 1/2 YARD CAPACITY, MULTILINKED 24" & 36" CHUTES

WOLVERINE MIXER ATTACHMENT FOR SKIDSTEER, 53"X28"

20' SHIPPING CONTAINER

(2) WOLVERINE SWEEPER ATTACHMENTS FOR SKIDSTEER, 48" BRUSH

HMB JAW ATTACHMENT FOR EXCAVATOR

APPROX. 18' X 16' X 24' PAINT BOOTH, G90 GALVANIZED US STEEL

CONSTRUCTION, 42" FAN, 5" CENTER-TO-CENTER (THIS ITEM LOCATED AT 890 LEILANI STREET, HILO - PLEASE CALL FOR PREVIEW)

DEWALT HOPPER

ASSORTED METAL WASTE BINS

(2) 12'X6' WORK TABLES

AND MUCH MORE!

ADDITIONAL ITEMS ADDED DAILY!



TERMS & CONDITIONS

- 13% BUYERS PREMIUM ON ALL PURCHASES -
PAYMENT: FULL PAYMENT MUST BE MADE BY
5:00 PM, FEBRUARY 2ND.

REMOVAL: ALL ITEMS MUST BE REMOVED NO LATER THAN
4:00 PM, FEBRUARY 9TH .

REMOVAL HOURS: 8:00 AM – 4:00 PM FEBRUARY 2ND - 9TH,
NO WEEKEND REMOVAL.

WARRANTY DISCLAIMER: ALL SALES ARE FINAL.
ALL ITEMS ARE BEING SOLD "AS IS, WHERE IS," WITH ALL
FAULTS AND WITHOUT ANY WARRANTIES AS TO
MERCHANTABILITY.

COMPLETE TERMS AND CONDITIONS OF SALE WILL BE
AVAILABLE AT THE TIME OF SALE.



2007 JLG 2630ES



1989 CASE 1550

MURPHYAUCTION.COM FOR ADDITIONAL INFORMATION