

Reman Equipment - South Slocan, BC



TERMS AND CONDITIONS

13% BUYERS PREMIUM ON ALL PURCHASES

ALL BIDS & PAYMENTS WILL BE IN US DOLLARS

PAYMENT: FULL PAYMENT MUST BE MADE BY 5 PM, WEDNESDAY, MARCH 10TH. PAYMENT MUST BE MADE BY ONLINE CREDIT CARD OR WIRE TRANSFER ONLY, NO IN-PERSON PAYMENTS (DUE TO COVID19). AFTER THE AUCTION CLOSING & YOU RECEIVE YOUR EMAILED INVOICE, PLEASE REPLY AND WE WILL CHARGE YOUR CARD ON FILE. TO PAY ONLINE GO TO MURPHYAUCTION.COM CLICK ON THE ONLINE BIDDING DROPDOWN MENU AND GO DOWN TO MAKE PAYMENT.

WARRANTY DISCLAIMER: ALL SALES ARE FINAL. ALL ITEMS ARE BEING SOLD "AS IS, WHERE IS," WITH ALL FAULTS AND WITHOUT ANY WARRANTIES AS TO MERCHANTABILITY OF FITNESS FOR A PARTICULAR PURPOSE. THE PRINCIPAL/SELLER, THE AUCTIONEER, THE ADVERTISING COORDINATOR, AND ANY OF THEIR AGENTS MAKE NO EXPRESS OR IMPLIED WARRANTIES OF ANY TYPE. COMPLETE TERMS AND CONDITIONS OF SALE WILL BE AVAILABLE AT THE TIME OF SALE.

FOR PREVIEW & REMOVAL INFORMATION PLEASE CONTACT GRAHAM WITH KIW AT 250.399.4211

All dismantling will be arranged through KIW. KIW can supply shipping rates through their partners or can load a customer supplied truck. All equipment must be removed from the site by April 5th.

PREVIEW: All previewing needs to be pre-arranged ahead of preview date. No more than 6 people are allowed on the site at one time. Each person must fill out the KIW Covid site visit policy within 48hrs of your visit and masks are mandatory.

1.800.426.3008 - 425.486.1246 - murphyauction.com

START DATE: 11:00 AM | TUESDAY - MARCH 2
END DATE: 11:00 AM | TUESDAY - MARCH 9



1996 MCDONOUGH 54" BAND RESAW



James G. Murphy Co.
Commercial & Industrial Auctioneers
P.O. Box 82160, Kenmore, WA 98028

PRESORTED
FIRST CLASS MAIL
U.S. POSTAGE
PAID
SEATTLE, WA
PERMIT NO. 963



**REGISTER
TO BID @**
MURPHYAUCTION.COM



James G. Murphy Co.

Commercial & Industrial Auctioneers



PUBLIC ONLINE AUCTION

KIW - KOOTENAY INNOVATIVE WOOD

Reman Equipment

Start Date: 11:00 AM | Tuesday - March 2

End Date: 11:00 AM | Tuesday - March 9

Preview By Appointment Only

3020 S. Slocan Station Rd., South Slocan, BC

>>>>> ONLINE AUCTION <<<<<

1.800.426.3008 - 425.486.1246 - murphyauction.com



PUBLIC ONLINE AUCTION

KIW - KOOTENAY INNOVATIVE WOOD



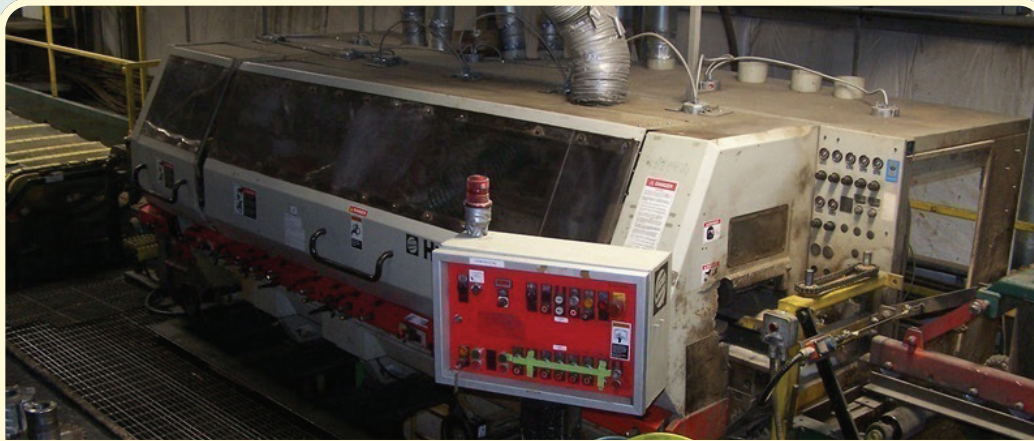
Start Date: 11:00 AM | Tuesday - March 2

End Date: 11:00 AM | Tuesday - March 9



Preview By Appointment Only

Location: 3020 S. Slocan Station Rd., South Slocan, BC



2001 WEINIG HYDROMAT 23



James G. Murphy Co.

murphyauction.com

425.486.1246



WEINIG RONDAMAT 960



OSI VALLEY TRIMMER



TRANSFER MOULDER OUTFEED



2006 OSI END MATCHER



1994 QUINCY QNW 1000D



WAGNER APEX

>>>>> ONLINE AUCTION <<<<<

1.800.426.3008 - 425.486.1246 - murphyauction.com

NO MINIMUMS - NO RESERVES

54" X 31' POWERED INFEED ROLLCASE W/(15) 8" DIAMETER ROLLS, TECO 10HP/1750 RPM MOTOR TO SM CYCLO-HPC3170 17:1 REDUCER, 66" HIGH SIDE WALL FOR LOADING

16' 5-ARM X 54" WIDE X 104" HIGH MECHANICAL PACKAGE TILT HOIST W/TECO 20 HP/1750RPM MOTOR TO RENOLDS 40:1 RATIO REDUCER W/54"X17' POWERED ROLLCASE W/(7) 8" DIAMETER ROLLS, TECO 10 HP/1,750 RPM MOTOR TO SM CYCLO HPS3170 17:1 RATIO REDUCER

6' 6-STRAND X 16' WIDE TRANSFER W/POLY TOP CHAIN, HYDRAULIC DRIVE MOTOR

6' 6-STRAND X 16" WIDE TRANSFER W/O-LINE DEFECT TRIM SAW W/BALDOR 7-1/2 HP/3,450 RPM MOTOR

WAGNER APEX TRANSVERSE IN-LINE MOISTURE METER, (5) SENSORS, S/N: APEX0102M

RAMTECH 54" X 16' HYDRAULIC OPERATED MOULDER FEED TABLE W/(2) PINCH ROLLS, APPROX. 6' 8-STRAND INFEED TRANSFER W/POLY TOP CHAIN, 5' HYDRAULIC OPERATED LIVE BRIDGE ROLLCASE W/HOLD DOWNS, BALDOR 40 HP/1750 RPM HYDRAULIC UNIT, 2 HP CIRCULATION PUMP & OIL COOLER

14" X 40' REJECT CONVEYOR BELT W/BALDOR 5 HP/1,750 RPM MOTOR TO SM CYCLO H3145 11:1 RATIO REDUCER

12" X 40' STICKER RECOVERY BELT W/HYUNDAI 5 HP/17,50 RPM MOTOR TO SM CYCLO H3145 11:1 RATIO REDUCER

STICKER UNSCRAMBLER (FOR 50" STICKS) W/SEW 3HP/52:1 RATIO GEARHEAD MOTOR TO 30' 2-STRAND OUTFEED TRANSFER W/TOSHIBA 5HP MOTOR TO REXNORD REDUCER

2001 WEINIG HYDROMAT 23 8-HEAD MOULDER, 160 MM - 6.3" THICK X 230 MM - 9.06" WIDE CAPACITIES, 6 & 12-KNIFE HEADS, 1ST BOTTOM HEAD 25HP, 1ST TOP HEAD 25 HP, 1ST LEFT HEAD 15 HP, 1ST RIGHT HEAD 15 HP, 2ND RIGHT HEAD 15 HP, 2ND TOP HEAD 25 HP, 2ND BOTTOM HEAD 25 HP, SPARE HYDROLOCK HEADS, PARTS, S/N: 92549

10" X 3' MOULDER OUTFEED W/SEW 2HP GEARHEAD MOTOR

3' 8-STRAND X 16' WIDE TRANSFER W/POLY TOP CHAIN, EURODRIVE 5 HP GEARHEAD MOTOR

OSI 16' VALLEY TRIMMER W/(2) SAWS, 34' LONG 17-STRAND X 16' WIDE LUGGED FEED THRU TRANSFER, (2) INTEGRAL EVEN END ROLLCASES, TRIM RETURN BELTS, TRIMMER DECLINE OUTFEED TRANSFERS, OVERHEAD CUT IN TWO SAW W/10-STRAND LUGGED OVERHEAD TRANSFER, (2) INTEGRAL DROP OUT GATES, INTEGRAL UNDER TRANSFER, SEW EURODRIVE 5 HP/92:1 RATIO REDUCER, ALL INTEGRAL DRIVERS, CONTROLS & ELECTRICS

24" X 20' BELT CONVEYOR W/EURODRIVE 3 HP GEARHEAD MOTOR

24" X 19' BELT CONVEYOR W/EURODRIVE 3 HP GEARHEAD MOTOR

25' 7-STRAND X 15'6" WIDE TRANSFER W/POLY TOP CHAIN, 2 HP GEARHEAD MOTOR

(2) 48" X 45' BELT TRANSFERS W/(1) EURODRIVE 2 HP GEARHEAD MOTOR

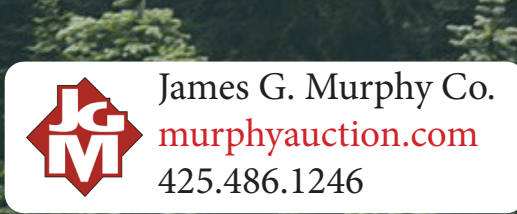
PRECISION 18M-R.H. CHOP SAW, 7-1/2 HP, INFEED GRAVITY ROLLS, OUTFEED LUMBER GAUGES, S/N: 763


FURNIMATE MACHINERY CS18R-R.H. CHOP SAW, 7-1/2 HP, INFEED GRAVITY ROLLS, OUTFEED LUMBER GAUGES, S/N: 33813

PRECISION 18M-R.H. CHOP SAW, 7-1/2 HP, INFEED GRAVITY ROLLS, OUTFEED LUMBER GAUGES, S/N: 5031

FURNIMATE MACHINERY 818114-R.H. CHOP SAW, 7-1/2 HP, INFEED GRAVITY ROLLS, OUTFEED LUMBER GAUGES, S/N: 33884

12" X 40' CONVEYOR W/HYUNDAI 7-1/2 HP/1,750 RPM MOTOR TO NORD REDUCER



 James G. Murphy Co.
murphyauction.com
425.486.1246

PUBLIC ONLINE AUCTION - SOUTH SLOCAN, BC

(2) 48" X 40' BELT TRANSFERS W/(1) SEW EURODRIVE 1 HP GEARHEAD MOTOR
(2) 60" X 18' BELT TRANSFERS W/(1) SEW EURODRIVE 1 HP GEARHEAD MOTOR
2006 OSI END MATCHER - PRECISION MILLED TRANSFER, PROCESS BOARDS
2.25"-8.75" WIDE X 1'-16" LONG, 30-60 LPM, 20 HP GEARHEAD MOTOR,
CONTROLS & ELECTRICS
13" X 21" BELT CONVEYOR W/BALDOR 1 HP GEARHEAD MOTOR
40' 5-STRAND X 16' WIDE TRANSFER W/POLY TOP CHAIN, 24" WIDE FLAT BELT
1993 WEINIG PROFIMAT P22N 5-HEAD MOULDER, 130MM - 5.12" THICK X
220MM - 8.66" WIDE (REBUILT & NOT INSTALLED), S/N: 2267249
1994 QUINCY QNW 1000D ROTARY SCREW AIR COMPRESSOR, 1000 CFM, 200
HP MOTOR, AIR COOLED, HOUR METER READS: 43,122, S/N: 940545
14' 4-STRAND X 16' WIDE H78 CHAIN TRANSFER W/TOSHIBA 7-1/2 HP/87.5:1
RATIO GEARHEAD MOTOR
16' 3-ARM X 6' HIGH MECHANICAL TILT HOIST W/15 HP GEARHEAD MOTOR
12" X 30' STICKER RECOVERY BELT W/TECO 5 HP MOTOR TO SM CYCLO
REDUCER
STICKER UNSCRAMBLER (FOR 50" STICKS) W/BALDOR 3 HP GEARHEAD
MOTOR TO 18' 2-STRAND OUTFEED TRANSFER W/TECO 5 HP MOTOR TO SM
CYCLO REDUCER
7' 5-STRAND 81X CHAIN X 16' WIDE TRANSFER W/HYDRAULIC DRIVE MOTOR
12" X 56' BELT CONVEYOR W/TOSHIBA 5 HP GEARHEAD MOTOR
14" X 24' BELT CONVEYOR W/EURODRIVE GEARHEAD MOTOR
1996 MCDONOUGH 54" VERTICAL BAND RESAW W/TECO 75 HP/1,775 RPM
MOTOR, AIR STRAIN, TILTING/CENTERING HYDRAULIC DRIVEN FEED ROLL
SYSTEM ADJUSTABLE TO 180 FPM, RUNS 2"-6" WIDE BLADES (SPARES),
S/N: 54-1546
12" X 28' BELT TRANSFER W/EURODRIVE 3 HP GEARHEAD MOTOR
1986 QUINCY 1500B ROTARY SCREW COMPRESSOR, 1,500 CRM, 300 HP
MOTOR, AIR COOLED, HOUR METER READS: 27,100, S/N: 86059
1995 WEINIG RONDAMAT MODEL R912 AUTO GRINDER FOR STRAIGHT KNIVES
& CUTTERS, S/N: 912/940
2001 WEINIG RONDAMAT MODEL R960 PROFILE GRINDER, S/N: 92551
2002 WEINIG 970070 PROFILE CUTTER FOR 960 PROFILE GRINDER, S/N: 96903
ARMSTRONG #2 L.H. BANDSAW GRINDER, REBUILT W/LINEAR RAILS,
SIDE-WINDER PUSH FINGER & WHEEL SHAPE UP, FILING CLAMPS & AIR BACK
FEED, SLAVE STANDS, CAMS ARE 1 1/2" TOOTH PITCH, .625 GULLET DEPTH
(NOT INSTALLED), S/N: 18904
QUANTITY OF SPARE 6 & 12-KNIFE HYDROLOCK MOULDER HEADS, KNIVES &
SAWS
QUANTITY OF WEINIG MOULDER & OSI END MATCHER SPARE PARTS
2005 WOODMIZER MULTIHEAD 2-HEAD HORIZONTAL BANDSAW SYSTEM, 12" X
8" CAPACITIES, 8" FEED THRU BELT, S/N: 103109
SALEM 1636HT WOOD WASTE GRINDER W/TECO 50 HP/1765 RPM MOTOR,
HORIZONTAL INFEED, BOTTOM DISCHARGE, S/N: 1141103
LEADERMAC SMARTMAC/CANTEK LMC-5185 5-HEAD MOULDER, 6" X 9"
CAPACITIES, 52-1/2 TOTAL HP, LARGEST MOTOR 15 HP, 230V (PURCHASED
NEW IN 2008, NOT INSTALLED), S/N: 806004
2004 TECHTRONIX MDW1-CO-4300-350/16 35" WHOLE LOG METAL DETECTOR
W/FIBERGLASS 1/2 PIPE CONVEYOR LINER, S/N:2004-08-1046
SAMUEL ACME STRAPPER (NO BANDING HEAD) TOP & SIDE SQUEEZE
(NOT INSTALLED)
NUMEROUS ASSORTED HYDRAULIC UNITS, TANKS, PUMPS & VALVES
(NOT INSTALLED)



James G. Murphy Co.
murphyauction.com
425.486.1246

1.800.426.3008 - 425.486.1246 - murphyauction.com

NO MINIMUMS - NO RESERVES

ASSORTED ROLLCASES & OTHER EQUIPMENT (NOT INSTALLED)

MULTI-DRILL FOR FLOOR DECKING

LOCTITE CPM 3020 CNC TEMPLATE MAKING ROUTER

MITSUBISHI A700 MOTOR CONTROL DRIVES

ALLEN BRADLEY 20 HP REVERSING CONTACTOR

KEB F4 COMBI DRIVE VARIABLE SPEED DRIVE

(2) **ALLEN BRADLEY POWERFLEX 4** VFD MOTOR CONTROLLER

EATON CUTLER HAMMER MVX 9000 3 HP VFD MOTOR CONTROLLER

BALDOR 20 HP/3,520 RPM AC MOTOR

TOSHIBA 75 HP/1,765 RPM AC MOTOR

SPARE PARTS INVENTORY

(5) **TECO** 100 HP/1,770 RPM AC MOTORS

G.E. 350 HP/1,180 RPM AC MOTOR

BALDOR 200 HP/1,750-1,900 RPM/500V DC MOTOR

SUTORBILT 9500V 8" X 20" HIGH PRESSURE BLOWER

SUTORBILT APPROX. 8" X 20" HIGH PRESSURE BLOWER

SUTORBILT GAHLBPA 8" X 18" ROTARY POSITIVE BLOWER

QUANTITY OF CONTROL TECHNIQUES UNIDRIVE MOTOR CONTROLLERS

(3) **ALLEN BRADLEY 1305** 5 HP MOTOR CONTROLLERS

EATON MVX 9000 1 HP SENSORLESS VECTOR DRIVE

TOSHIBA TOSVERT-130G2+ TRANSISTOR INVERTER

(2) **SIEMENS SIKOSTART 3RW3458-ODC34** 75 HP SOFT START

SIEMENS T130504B CONTROLLER BACK PAN

(1) MODICON BRIDGE - AEG NW-BM85-000, (6) MODICON COM ADAPTERS - 170NER 110-21, (4) MODICON OUTPUT CARDS - 140DD035300

(2) PERCEPTRON DIGITAL CONTOUR SCANNER HEAD SENSORS, S/N: 916 & 1025

USNR MILLWORK GEO-2-G26L7D LASER

HERMARY LPS-FCF-16 SENSORY CALIBRATION TOOL

(4) SCHNEIDER MODEL LMHCE572C AC SERVO MOTORS, (1) LMDCE571C AC SERVO MOTOR, (1) LMDCE853C AC SERVO MOTOR, (1) YASKAWA MODEL SGMJV-08A3M61 AC SERVO MOTOR

1974 HYSTER H200ES FORKLIFT, 16,000 LB. CAPACITY, PERKINS 6-CYLINDER DIESEL, APPROX. 179" 2-STAGE MAST, SIDE SHIFT, 47" FORKS, DUAL PNEUMATIC TIRES, HOUR METER READS: 5,619, S/N: B007PO79200

(16) **ACE-CO** HYDRO LOCK HEADS

(6) **TITAN KNIFE** HYDRO-LOCK HEADS

(52) **WEINIG** HYDRO-LOCK HEADS

(2) **ACE-CO** HYDRO-LOCK SAW ARBORS

(2) **ETB HYDROGRIP** HYDRO-LOCK SAW ARBORS

KNIFE STEEL

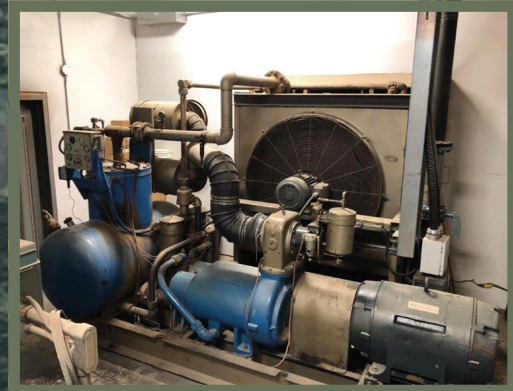
(60) SPLITTER SAWS

(13) EASED EDGE CUTTER SAWS

(54) SPACERS FOR HYDRO-LOCK SAW ARBOR

50MM BORE SPACERS FOR H23-SHAFTS

LIFTING BAR FOR HYDRO CUTTERS **AND MUCH MORE!**



James G. Murphy Co.
murphyauction.com
425.486.1246

1.800.426.3008 - 425.486.1246 - murphyauction.com