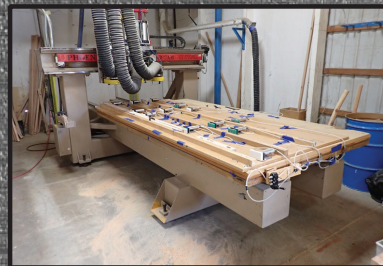




James G. Murphy Co.  
425.486.1246 - [murphyauction.com](http://murphyauction.com)



PHOENIX HDS



NORTHWOOD NW-265



MEREEN JOHNSON 424-DC



POLYMAC AKRON 840



RAVO 1300



ELLIS



MARTIN



HOLZMA HPP-81



WADKIN PBR

# PUBLIC ONLINE AUCTION

NEWOOD DISPLAY FIXTURE MFG. COMPANY

CNC WOODSHOP

**NEWOOD®**  
DISPLAY FIXTURE MFG. COMPANY

Start Date: 10AM | Wednesday - June 11

End Date: 10AM | Wednesday - June 18

Preview: 8AM to 4PM | Tuesday - June 17

Location: 10 N. Seneca Road, Eugene, OR 97402

Go To [murphyauction.com](http://murphyauction.com) For More Information!



SCAN HERE  
FOR FULL  
PREVIEW



James G. Murphy  
425.486.1246  
[murphyauction.com](http://murphyauction.com)



HYSTER H60XM



2016 SCMI SANDYA S600



2020 HOMAG CENTATEQ N-300



### CNC ROUTERS:

**2020 HOMAG CENTATEQ N-300** CNC ROUTER, 60"X144" VACUUM TABLE, MULTI SPINDLE HEAD, WASTE CONVEYOR BELT, BUSCH MINK MV0312B VACUUM PUMP, LASER CURTAINS, CONTROLS, S/N: 0-250-69-0872

**PHOENIX HDS 3-HEAD** CNC ROUTER, 60"X120" VACUUM TABLE, CONTROLS

**NORTHWOOD NW-265** CNC ROUTER, (2) 60"X72" VACUUM TABLES, 12-STATION ATC, MULTI SPINDLES, FANUC CONTROLS, S/N: 10062

### PLANERS:

**2016 SCMI SANDYA S600** 42" WIDE BELT PLANER, 2-HEAD SANDER, CONTROLS, S/N: AB/228834

**CANTEK GT-635ARD** 25 HP 25" DOUBLE SIDED PLANER, GTM-525 CONTROLS, S/N: J2380

### RIP SAW:

**MEREEN JOHNSON 424-DC** 36" RIP SAW, LASERS, GANG, S/N: MJ-4804

### EDGE BANDERS:

**2017 SCMI OLYMPIC K560** EDGE BANDER, S/N: AH/120104

**POLYMAC AKRON 840** EDGE BANDER, S/N: 86301

### MITERING BANDSAW/MITER SAWS:

**ELLIS** HORIZONTAL MITERING BANDSAW

**CTD M25R** 12" MITER SAW

**CTD F255** MITER SAW W/FEED

(6) SLIDING COMPOUND MITER SAWS

**CTD D45X** DOUBLE MITER CORNER SAW

### PANEL SAWS:

**SCMI SIGMA IMPACT** CNC PANEL SAW

**MARTIN** HORIZONTAL SLIDING PANEL SAW W/PERTICI 4-HEAD POWER FEEDER

**ROGERS** VERTICAL PANEL SAW

### NOTCHER/NOTCH SAW:

**PAOLONI TCP-1300** HORIZONTAL NOTCH SAW W/PNEUMATIC CLAMPS & FENCE

CUSTOM BUILT 2-HEAD SHELF NOTCHER, CLAMPS, CONTROLS

### TABLE SAWS:

**SAWSTOP ICS73480** 10" CABINET TABLE SAW W/FENCE

**SAWSTOP** 10" INDUSTRIAL CABINET TABLE SAW

**GRIZZLY G0606X1** TABLE SAW W/4-HEAD POWER FEEDER

### ROUTER TABLES:

STEEL ROUTER TABLE W/EUROPA 380 3-HEAD POWER FEED

SINGLE HEAD ROUTER TABLE W/STEFF 4-HEAD POWER FEED

CUSTOM BUILT 3-HEAD ROUTER TABLE W/(3) UNIVER 3-HEAD POWER FEEDS

### SHAPERS:

CUSTOM BUILT 2-HEAD SHAPER TABLE W/(2) MAGGI 4-HEAD POWER FEEDS

2-HEAD SHAPER W/(3) HOLZHER POWER FEEDS

### SANDERS:

**RITTER R-903** 50" DOUBLE SIDED BELT SANDER

**AEM 602-52HT** 52" 2-HEAD WIDE BELT SANDER, S/N: 27334

**STAR DS-20** 20" DISC SANDER

**WADKIN** 3-HEAD MOLDER

### DRILLING MACHINES:

96" 48 SPINDLE VERTICAL DRILLING MACHINE

**RITTER R-150** 96-SPINDLE VERTICAL DRILLING MACHINE

96" MULTI SPINDLE DRILL

**RITTER R-46** 46-SPINDLE TWIN LINE DRILL

**BLUM MINI PRESS** MULTI SPINDLE DRILL

**CASTLE** POCKET DRILL W/TABLES

CUSTOM BUILT TWIN CAM DRILL ON CASTERS, CLAMP

**POWERMATIC 1200** DRILL PRESS

**PORTER CABLE** DRILL PRESS

**CM MILLING** DRILLING MACHINE

1.5 HP HORIZONTAL DRILLING MACHINE

CUSTOM BUILT 96 MULTI SPINDLE 6-HEAD DRILL



ROGERS



PAOLONI TCP-1300



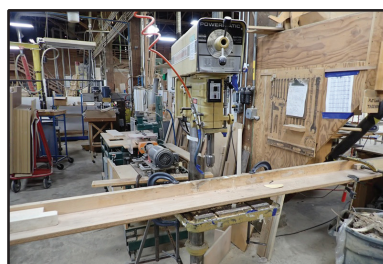
CTD D45X



SAWSTOP ICS73480



WADKIN



POWERMATIC 1200

### ROLLING STOCK:

**HYSTER H60XM** 5,800 LB CAP. CUSHION TIRED FORKLIFT,

181" 3-STAGE MAST, SIDE SHIFT, PROPANE, S/N: D177B41163U, HRS: 8,500

**HYSTER S50XL** 5,100 LB CAP. SOLID TIRE FORKLIFT, 149" 2-STAGE MAST, SIDE SHIFT, PROPANE, S/N: B187V01981L

**DAEWOO G25S-2** 5,000 LB CAP. CUSHION TIRE FORKLIFT,

188" 3-STAGE MAST, SIDE SHIFT, PROPANE, S/N: 10-01381, HRS: 7,060

**BIG JOE PDI 24-A05** 2,000 LB CAP. ELECTRIC WALK BEHIND STACKER T/A CURTAIN TRAILER

**1995 TOYOTA** PICKUP TRUCK, ODOMETER READS: 99,660

### CLAMP TABLES, CLAMP RACKS & CASE CLAMPS:

**RITTER R375V** 46"X96" PNEUMATIC CLAMP TABLE

56"X160" PNEUMATIC CLAMP TABLE

**RITTER** 70"X140" PNEUMATIC CLAMP RACK

(2) **UHLING HP-3000** PNEUMATIC CASE CLAMPS

**TAYLOR 800128** 108" CLAMP RACK

### AIR COMPRESSORS, AIR DRYERS & RECEIVER TANK:

**2017 ROGERS RMC-KI-75-125** 75 HP VSD ROTARY SCREW AIR COMPRESSOR, S/N: 1706522334

**QUINCY QT15P** 10 HP 2-STAGE HORIZONTAL TANK AIR COMPRESSOR

(2) HORIZONTAL TANK AIR COMPRESSORS

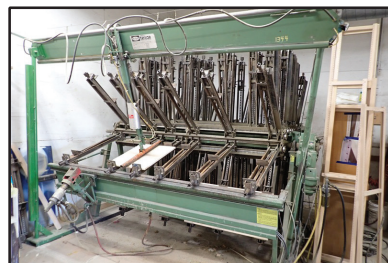
**RADIO FREQUENCY SERVICES RF** DRYER, (2) 60"X100" PNEUMATIC CLAMPING RACKS, HYDRAULIC UNIT, CONTROLS

**ZEKS 400NCGA400** REFRIGERATED AIR DRYER

VERTICAL AIR RECEIVER TANK



CCI



TAYLOR 800128



James G. Murphy Co.

425.486.1246

Murphyauction.com



SCAN HERE  
FOR FULL  
PREVIEW



## MISC. EQUIPMENT:

**RAVO 1300** DOUBLE END TENONER SAW

**POWERMATIC** 2-BAG DUST COLLECTOR

**WADKIN PBR 24"** RESAW W/POWER FEED

**WRIGHT 34"** VERTICAL RESAW (NO DRIVE)

**YATES** SWING SAW W/TABLE

**HOLZMA HPP-81** CNC BEAM SAW

**CONTRX 1/4** FLOOR MOUNTED JIB CRANE W/VACULEX LIFTING

ATTACHMENT & VACUUM PUMP

PEDESTAL MOUNTED JIB CRANE W/VACUUM LIFTING ATTACHMENT

**LOBO BH** VERTICAL & HORIZONTAL BORING MACHINE

**SCAN HUGGER HL3-7-10** WASTE GRINDER, CONTROLS, S/N: 8077

**PRIME HEAT** PORTABLE DRYER

**HEIAN RM-5A** PIN ROUTER

**PACCO 600** 12" SLITTER

**CCI THERMAL HEATING SYSTEMS** DRYING OVEN, APPROX. 15' X 9', 480V,

3-PHASE, DRIQUIK 40-0L1-2500 CONTROL PANEL

(2) DOWN DRAFT SANDING TABLES, 73.5" X 38" X 37.5"

**BARBO EMA 77-1455** JOINTER, 220V

**ARTISAN 797AB** DROP FEED WALKING FOOT SWING/UPHOLSTERY MACHINE

12-TON INDUSTRY UPHOLSTERY H-PRESS

(2) SWEED MACHINE CHOPPERS

**BECKER SPARE** VACUUM PUMP

TRIM STATION W/PRECISION 14A UP CUT SAW, SCISSOR LIFT ON RAILS,

24" WASTE BELT CONVEYOR, LANDING TABLE, CATWALK

(30) SECTIONS OF PALLET RACKING, SHAPER HEADS, (7) FORKLIFT DUMP

HOPPERS, (30) DOUBLE SIDED DRYING RACKS, (40) CRAZY WHEEL

CARTS, (4) PNEUMATIC SPRAYERS, (3) BANDING CARTS, MOLDER HEADS,

(6) PALLET JACKS **AND MUCH MORE!**



James G. Murphy Co.

425.486.1246

Murphyauction.com



HYSTER S50XL



2017 ROGERS RMC-KI-75-125



DAEWOO G25S-2



(2) UHLING HP-3000



WRIGHT



YATES



RITTER R-903



RITTER R-150



STAR DS-20



RADIO FREQUENCY SERVICES



SCAN HUGGER HLS-7-10



RITTER R375V



CONTRX



ARTISAN 797AB



POWERMATIC



LOBO BH



(30) DOUBLE SIDED  
DRYING RACKS



(30) SECTIONS OF  
PALLET RACKING



## TERMS & CONDITIONS

- 13% BUYERS PREMIUM ON ALL PURCHASES -

**PAYMENT:** FULL PAYMENT MUST BE MADE BY

5:00 PM - WEDNESDAY, JUNE 18.

**REMOVAL:** ALL ITEMS MUST BE REMOVED NO LATER THAN

4:00 PM - THURSDAY, JUNE 26TH \*NO WEEKEND REMOVAL\*

**REMOVAL HOURS:** 8:00 AM - 4:00 PM JUNE 19TH - 26TH

**WARRANTY DISCLAIMER:** ALL SALES ARE FINAL.

ALL ITEMS ARE BEING SOLD "AS IS, WHERE IS," WITH ALL FAULTS AND WITHOUT ANY WARRANTIES AS TO MERCHANTABILITY.

COMPLETE TERMS AND CONDITIONS OF SALE WILL BE AVAILABLE AT THE TIME OF SALE.







2017 SCMI OLYMPIC K560



**REGISTER  
TO BID @  
MURPHYAUCTION.COM**



**James G. Murphy Co.**

Commercial & Industrial Auctioneers  
P.O. Box 1127, Marysville, WA 98270

PRESORTED  
FIRST CLASS MAIL  
U.S. POSTAGE  
**PAID**  
SEATTLE, WA  
PERMIT NO. 963

# PUBLIC ONLINE AUCTION

**NEWOOD DISPLAY FIXTURE MFG. COMPANY**

**CNC WOODSHOP NEWOOD®**  
DISPLAY FIXTURE MFG. COMPANY

**Start Date:** 10AM | Wednesday - June 11

**End Date:** 10AM | Wednesday - June 18

**Preview:** 8AM to 4PM | Tuesday - June 17

**Location:** 10 N. Seneca Road, Eugene, OR 97402

Go To [murphyauction.com](http://murphyauction.com) For More Information!



SCAN HERE  
FOR FULL  
PREVIEW



James G. Murphy  
425.486.1246  
[murphyauction.com](http://murphyauction.com)



AEM 602-52HT



CANTEK GT-635ARD



SCMI SIGMA