

PUBLIC ONLINE AUCTION

PILEDIVING & DRILLING CONTRACTOR



LO-DRILL RIG LO-DRILL LLMH-TFB-80
80' DRILLING DEPTH



James G. Murphy Co.

Commercial & Industrial Auctioneers
P.O. Box 1127, Marysville, WA 98270

PRESORTED
FIRST CLASS MAIL
U.S. POSTAGE
PAID
SEATTLE, WA
PERMIT NO. 963



PUBLIC ONLINE AUCTION

Pile Contractors

Piledriving & Drilling Contractor

Start Date: 10:00 AM | Tuesday - December 9

End Date: 10:00 AM | Tuesday - December 16

Preview: 8:00 AM to 4:00 PM | Monday, December 15

Location: 12014 44th Place S., Tukwila, WA 98178

Second Location 24309 WA-530, Arlington, WA 98223

GO TO MURPHYAUCTION.COM FOR MORE INFO!



2012 MANITOWOC 11000-1



1994 MANITOWOC 222HD



2011 DAVEY DRILL DK725



LO-DRILL



1997 APE 200

NO MINIMUMS - NO RESERVES

1.800.426.3008 - 425.486.1246 - MURPHYAUCTION.COM



PUBLIC ONLINE AUCTION - PILE CONTRACTOR NO MINIMUM - NO RESERVES



CRAWLER CRANES:

2012 MANITOWOC 11000-1 110 TON CRAWLER CRANE, 150' BOOM, 3 DRUMS, 332 HP DIESEL, S/N: 11001048

1994 MANITOWOC 222HD 200 TON CRAWLER CRANE, 100' HD BOOM, 3 DRUM, 1 AUX DRUM, CUMMINS M11, S/N: 222HD-001

1990 MANITOWOC M80W 80 TON CRAWLER CRANE, 150' (#42 BOOM), CUMMINS 8.3L (REPOWERED IN 2009) (UNDERCARRIAGE, ROLLERS, & ROTEX REBUILT IN 2019), S/N: 8108388

DRILLS:

2011 DAVEY DRILL DK725 TIE BACK DRILL, 229 HP DIESEL, DUAL DUPLEX ROTARY TORQUE OF 4,050-12,000 FT/LBS, HOUR METER READS: 3,290, S/N: 12864

LO-DRILL RIG LO-DRILL LLM-60 60' DRILLING DEPTH, 24,000 FT/LBS, EXTRA 3" X 60' KELLY PACK, MOUNTED ON 1994 SAMSUNG SE280LC, HOUR METER READS: 6,141, S/N: HAY2050

LO-DRILL RIG LO-DRILL HTFB-60 60' DRILLING DEPTH, 43,000 FT/LBS, MOUNTED ON 1996 HITACHI EX400LC-3C, HOUR METER READS: 13,451, S/N: 16A6039

LO-DRILL RIG LO-DRILL LLMH-TFB-80 80' DRILLING DEPTH, 36,000 FT/LBS, MOUNTED ON 1997 HITACHI EX450H-5, HOUR METER READS: 11,309, S/N: 16E7147

HYDRAULIC EXCAVATORS:

2007 HITACHI ZX450LC-3 HYDRAULIC EXCAVATOR, PIN GRABBER, BUCKET, AUX HYD, HOUR METER READS: 11226, S/N: FF01J3Q020947

1995 HITACHI EX300LC-3 HYDRAULIC EXCAVATOR, S/N: 15L7639

FORKLIFT:

PETTINBONE ROUGH TERRAIN FORKLIFT

VAN TRUCK:

2005 CHEV C4500 VAN TRUCK, DURAMAX, AUTO, ODOMETER READS: 52,100, S/N: 1GBE4V1215F503455

PUMPS:

OLIN GROUT PUMP

2009 OLIN 5/65 PORTABLE GROUT PUMP, S/N: 555143

CHEM GROUT COLLOIDAL CG-6880 GROUT PUMP, 2011 32HP DIESEL, OUT 1 - 45 GPM, 261 PSI

VIBRO HAMMERS:

1997 APE 200 VIBRO HAMMER, CAT V8-503 HP POWER UNIT (S/N:67U14015, ARR. # 4W7474), OIL CONTAINMENT, REBUILT 2015, 160 TON DRIVING, 150 TON EXTRACTION, HOUR METER READS: 4,424, S/N: 8320

VULCAN 1150 VIBRO HAMMER, CAT 3208 POWER UNIT (S/N: 1J3350, DYNAMIC FORCE 42 TON, EXTRACTION FORCE 33 TONS, OIL CONTAINMENT, S/N: 1A3485

2016 ICE 22D VIBRO HAMMER, 140C SHEET JAWS, CAT C9-350 HP TIER 3 POWER UNIT, 2,200 IN-LB ECCENTRIC MOMENT, 54 TONS EXTRACTION LINE PULL, OIL CONTAINMENT, S/N: C0948

PILE DRIVING HAMMERS:

(3) DIESEL PILE DRIVING HAMMERS W/LEADS

BERMINGHAMMER B4505 PILE DRIVING HAMMER, 75,900 FT/LBS, 6,600 LB RAM WEIGHT

BERMINGHAMMER B3505 PILE DRIVING HAMMER, 46,000 FT/LBS, 4,000 LB RAM WEIGHT

BERMINGHAMMER B2505 PILE DRIVING HAMMER, 34,500 FT/LBS, 3,000 LB RAM WEIGHT

PILE DRIVING LEADS:

APE 8"X26"X100' PILE DRIVING LEADS (ORANGE)

APE TYPE 1 8"X26"X90' PILE DRIVING LEADS (BLACK + 10' BLUE)

APE TYPE 2 8"X32"X110' PILE DRIVING LEADS (BLUE)

ICE PILE DRIVING LEADS

BERMINGHAMMER PILE DRIVING LEADS

MISC. EQUIPMENT:

CASING HAMMER

MANITOWOC TYPE #42 80' BOOM & 21' TIP SECTION

APE 32,000 FT/LBS AUGERCAST DRILL TOP DRIVER

ICE 250 HYDRAULIC POWER PACK, CAT 3208T

(2) MULTIQUIP DAW-500S2CV/CC WELDER/GENERATORS

JIB BOOM

20' - 40' CONTAINERS W/CONTENTS

DIGGING BUCKETS

CONTINUOUS AUGERS

DIRT & ROCK AUGERS

CORE BARRELS

STEEL, CASING, LEADS, SHACKLES, BLOCKS, RIGGING AND MUCH MORE!



SCAN HERE
FOR FULL
PREVIEW



James G. Murphy Co. - 425.486.1246
Go To murphyauction.com For More Info



2005 CHEV C4500



1990 MANITOWOC M80W



LO-DRILL RIG LO-DRILL LLM-60



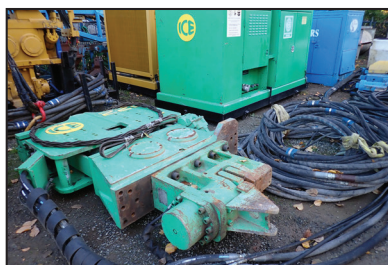
LO-DRILL RIG LO-DRILL LLMH-TFB-80



PILE DRIVING LEADS



CHEM ROUT COLLOIDAL CG-6880



2016 ICE 22D



VULCAN 1150

TERMS & CONDITIONS

- 13% BUYERS PREMIUM ON ALL PURCHASES -

PAYMENT: FULL PAYMENT MUST BE MADE BY
5:00 PM - TUESDAY, DECEMBER 16TH.

REMOVAL: ITEMS MUST BE REMOVED NO LATER THAN
4:00 PM - DECEMBER 30TH. ***NO WEEKEND OR HOLIDAY REMOVAL***
REMOVAL HOURS: 8:00 AM - 4:00 PM DECEMBER 17TH THRU 30TH.

WARRANTY DISCLAIMER: ALL SALES ARE FINAL.

ALL ITEMS ARE BEING SOLD "AS IS, WHERE IS," WITH ALL FAULTS AND
WITHOUT ANY WARRANTIES AS TO MERCHANTABILITY.

**COMPLETE TERMS AND CONDITIONS OF SALE WILL BE
AVAILABLE AT THE TIME OF SALE.**

MURPHYAUCTION.COM FOR ADDITIONAL INFORMATION