



PUBLIC ONLINE AUCTIONS

THE FORMER QUALITY INN & SUITES

(1 OF 2)



2015 FORD TRANSIT 350HD ECOBOOST



James G. Murphy Co.

Commercial & Industrial Auctioneers
P.O. Box 82160, Kenmore, WA 98028

PRESORTED
FIRST CLASS MAIL
U.S. POSTAGE
PAID
SEATTLE, WA
PERMIT NO. 963



James G. Murphy Co.

murphyauction.com

425.486.1246

PUBLIC ONLINE AUCTIONS

THE FORMER QUALITY INN & SUITES

UNUSED HOTEL ROOM FURNISHINGS, COMMERCIAL LAUNDRY, KITCHEN
EQUIPMENT & ROLLING STOCK



Start Date: 11:00 AM | Wednesday - November 24

End Date: 11:00 AM | Wednesday - December 1

Preview: 8:00 AM to 4:00 PM | Tuesday, November 30

618 John Street, Seattle, WA 98109



THE FORMER QUALITY INN & SUITES

UNUSED HOTEL FURNISHINGS

Start Date: 11:00 AM | Wednesday - November 24

End Date: 11:00 AM | Thursday - December 2

Preview: 8:00 AM to 4:00 PM | Wednesday, December 1

9090 S. March Point Road, Anacortes, WA 98221



NO MINIMUMS - NO RESERVES



1.800.426.3008 - 425.486.1246 - MURPHYAUCTION.COM



Unused Hotel Furnishings NO MINIMUMS - NO RESERVES



618 John Street, Seattle, WA 98109:

(2) 2015 FORD TRANSIT 350HD ECOBOOST PASSENGER VANS
(70+) UNUSED FURNISHED ROOMS TO INCLUDE BEDS, TV'S, NIGHT STANDS, SLIDING DOORS, MIRRORS & MORE
UNIMAC UW60PVXU80001 INDUSTRIAL WASHING MACHINE W/PROCTOR & GAMBLE TOTAL ECLIPSE PRO CONTROLS, 60 LB MAX LOAD, 200-240V, SINGLE OR 3-PHASE
(2) **UNIMAC UWN0085T4VQV4001** INDUSTRIAL WASHING MACHINES, PROCTOR & GAMBLE TOTAL ECLIPSE PLUS CONTROLS, 85 LB MAX LOAD, 220/240V, 3-PHASE
WASCOMAT TD75 INDUSTRIAL GAS DRYER W/RESIDENTIAL MOISTURE CONTROL
(3) **UNIMAC** INDUSTRIAL GAS DRYERS
TURBO AIR M3 M3F47-2 52" 2-DOOR REACH-IN FREEZER
BLUE AIR BASF2 56" 2-DOOR REACH-IN REFRIGERATOR
BEVERAGE AIR KR46-1AS 54" 2-DOOR REACH IN REFRIGERATOR
TRISTAR 16" DEEP FRYER
TRISTAR 36" 6-BURNER GAS RANGE
TRUE 48" 2-DOOR REFRIGERATED PREP STATION
SILVER KING MILK DISPENSER
BUNN 2-POT COFFEE MAKER
80" SS 3-COMPARTMENT SINK
120" SS TABLE W/DISPOSAL
DYNAGLO PROTABLE HEATER
(24) **GREAT FLOORS PREMIUM XL-PS** PRESSURE SENSITIVE ADHESIVES
(8) PALLETS OF DONG PENG FG183022-A GLAZED PORCELAIN TILE (CARRARA)
(2+) **BRYAN ASHLEY** MINI BAR DRESSERS
BRYAN ASHLEY NIGHTSTAND
(8+) **BRYAN ASHLEY** KING LOUNGE CHAIRS
(8+) **BRYAN ASHLEY** SIDE TABLES
(13+) **BRYAN ASHLEY** WALL MOUNT VANITIES
(60+) **BRYAN ASHLEY** LOUNGE CHAIRS
(3+) **BRYAN ASHLEY** SIDE TABLES
(200+) CASES OF NYLON CARPET SQUARES
(2) **MANITOWOC IY0324A-161** ICE MACHINES W/DISPENSERS
(10) **STREAMLINE** COPPER PIPE SETS
(3+) **FRIEDRICH WALL MASTER** A/C UNITS
CLIPPER FLOOR SCRUBBING MACHINE
(80+) MCS 60"X30"X4" CULTURED MARBLE SHOWER PANS
(5+) **BRYAN AHSLEY** 2-BAY DINING TABLES
(6) MIRROR CHROME LUGGAGE RACKS
(25+) **ASHLEY RYAN** SIDE TABLES
(16+) **BRYAN ASHLEY** KING VANITY BENCHES
(48+) **NIAGRA** TOILETS
(100+) **BRYAN ASHLEY** BATHROOM AMENITY SHELVES
(50+) **SCOTT** TABLE LAMPS
(4) **CYBER POWER UPS** BATTERY SYSTEMS
FIRE EXTINGUISHERS, (60+) INTERIOR DOORS, (18+) EXTERIOR DOORS, LINEN SUPPLIES, (3) HOUSEKEEPING CARTS, EXTRA HAND SHEET SPREAD FOLDER, ASSORTED INVENTORY, LINEN BASKETS, LOBBY FURNITURE, TABLE & CHAIR INVENTORY, ASSORTED 48", 60", 72" SS TABLES, (2) TOASTERS, CEREAL DISPENSERS, JUICE MACHINE, STORAGE RACKING, SHEET ROCK, GYM EQUIPMENT **AND MUCH MORE!**



(70+) UNUSED FURNISHED ROOMS



UNIMAC UW60PVXU80001

9090 S. March Point Road, Anacortes, WA 98221:

(54+) **BRYAN ASHLEY** 64" MINIBAR DRESSERS
(10) **MANDY LI COLLECTION** 48" DRESSERS
90" WOOD END TABLE W/3-DRAWERS
(2) 72" WOOD DRESSERS W/6-DRAWERS
(2) 48" WOOD CABINETS
(12) **BRYAN ASHLEY** ROUND SIDE TABLES
(40) **BRYAN ASHLEY** END TABLES
(9+) **MANDY LI COLLECTION** END TABLES
(6) **MANDY LI COLLECTION** COFFEE TABLES
(130+) **BRYAN ASHLEY** NIGHT STANDS
(36) **CALIFORNIA FINEST** MAIN DINING CHAIRS
(30+) **CARSON'S HOSPITALITY** GREY FABRIC SLEEPER CHAIRS
(18+) **BRYAN ASHLEY** 3 CUSHION SLEEPER SOFA'S W/TROW PILLOW
(4+) GREY FABRIC LOUNGE CHAIRS
(30+) **BRYAN ASHLEY** BLUE FABRIC KING LOUNGE CHAIRS
(14+) **ERIC BRAND** BROWN WICKER CHAIRS
(6+) **LILY JACK** WHITE LOUNGE CHAIRS
(4+) **HALLMARK LIGHTING** CUSTOM CEILING PENDANTS
(9+) **VISUAL COMFORT & CO.** PAULO BRACKET LIGHTS
(3) **THOMAS O'BRIEN** LARGE HICKS PENDANT IN BRONZE & HAND RUBBED ANTIQUE BRASS
(12+) **LASPEC LIGHTING** 36" DRUM SHADE CEILING FIXTURES
(65+) **SCOTT LAMP CO.** POLISHED CHROME PORTABLE LAMPS
(8+) **ARTERIORS HOMES** TABLE LAMPS
(10+) IVORY CRACKLE PORCELAIN LAMPS
(36+) **SCOTT LAMP CO.** BLACK CHROME TABLE LAMPS
(48+) 5' POLISHED CHROME LAMPS
(9) **ARTERIORS HOMES** 5' FLOOR LAMPS
(8) **VANTEAL** 4.5' FLOOR LAMPS
(24) **BRYAN ASHLEY** VANITY WALL MOUNTS
(50+) **MANDY LI COLLECTION** 3-TIER METAL BAR CARTS
(85+) LG 47" LED TV'S
(33+) **BRYAN ASHLEY** 58" PADDED HEADBOARDS
(25+) **BRYAN ASHLEY** KING PADDED HEADBOARDS
(7) **BRYAN ASHLEY** BLUE FABRIC OTTOMANS
(9) **BRYAN ASHLEY** BLUE PADDED SUITE BENCHES
(5+) LUGGAGE RACKS
(9) **BRYAN ASHLEY** GREEN ADA DRY VANITY
(2) **HOST** HERRINGBONE 36" X 51" RECTANGLE MIRRORS
(50+) 70" X 40" FRAMELESS VANITY MIRRORS
(20+) **MAJESTIC MIRRORS & FRAMES** 72" X 52" DECORATIVE MIRRORS
(9+) **MAJESTIC MIRRORS & FRAMES** 36" X 36" DECORATIVE MIRRORS
(130+) **MAJESTIC MIRRORS & FRAMES** 30" X 40" DECORATIVE MIRRORS
LARGE ASSORTMENT OF MIRRORS
LARGE ASSORTMENT OF POLISHED GLAZED PORCELAIN
LARGE ASSORTMENT OF THROW PILLOWS
LARGE ASSORTMENT OF FABRIC
(75+) **TRED-MOR** 2580 54" X 60' 30 SQ YARDS CARPET CUSHION
AND MUCH MORE!



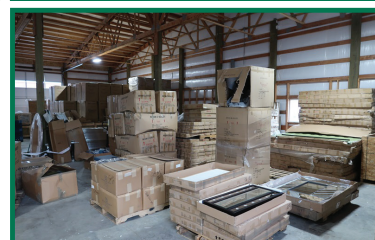
(54+) BRYAN ASHLEY



(18+) BRYAN ASHLEY



(85+) LG



UNUSED HOTEL FURNISHINGS



James G. Murphy Co.
425.486.1246
murphyauction.com

MURPHYAUCTION.COM FOR ADDITIONAL INFORMATION