

TC HEALTHCARE BOTTLING

Healthcare Bottler

Start Date: 10AM | Wednesday - March 22

End Date: 10AM | Wednesday - March 29

Preview: 8AM to 4PM | Tuesday, March 28

Location: 8109 River Dr. SE, Olympia, WA 98501

Closing Olympia Location



REVERSE OSMOSIS WATER SYSTEM



2021 ACASI TCAP-3-V
SPINDLE CAPPER



2021 ACASI TRUSPORT
48 BOTTLE UNSCRAMBLER



2013 MERCEDES BENZ SPRINTER 2500

NO MINIMUMS - NO RESERVES

REVERSE OSMOSIS WATER SYSTEM:

REVERSE OSMOSIS WATER SYSTEM TO INCLUDE: AXEON M1-6240 6-STAGE R/O SYSTEM, (3) LOCHINVAR ON DEMAND HEATERS, (3) SQUIRE INDIRECT HEATERS, (4) CARESOFT TANKS, PUMPS, SKID MOUNTED FILTER TREATMENT RACK, (2) 5,000 GALLON VERTICAL HOLDING TANKS, PIPING, SUPPORT EQUIPMENT, S/N:100595

FILLERS & SEALERS:

2021 EASTEY L-BAR SEALER W/HEAT TUNNEL, EASTEY CONVEYOR W/DUAL HEAD INKJET PRINTER

(5) INTERPACK USA 2024-BFF CASE SEALERS

2016 RIGAO RGNF-30B SEMIAUTOMATIC TUBE FILLER & SEALER, VSD OUTFEED CONVEYOR, CA1.5 CHILLER & ROLL CONVEYOR

2013 RIGAO RGNF-30B SEMIAUTOMATIC TUBE FILLER & SEALER, VSD OUTFEED CONVEYOR, RIGAO AC-2 CHILLER

ACASI PI-3100 8-HEAD INLINE PISTON FILLER

ACCUTEK 02-518-000 4-HEAD PISTON FILLER W/DIAPHRAGM PUMP & HOPPER

JDA UTS15 3-HEAD FILLER

ACCUTEK 02-004-000 SINGLE HEAD FILLER W/HOPPER & DIAPHRAGM PUMP

(2) ACCUTEK 02-003 SINGLE HEAD FILLERS

UNIFILLER COMPACT FILLER W/HOPPER TOPPER

LABELERS:

2018 PACK LEADER PRO-625W DUAL HEAD LABELER

2021 ACASI T-LABELER-W1 SINGLE HEAD LABELER

2018 LABELETTE 24-APS-108 SINGLE HEAD LABELER

(2) LABELETTE 24-APS-108 SINGLE HEAD LABELERS

UNIVERSAL SINGLE HEAD LABELER

2017 KETAN LR-290 SINGLE HEAD LABELER

KETAN LCT-200 LABELER

UNSCRAMBLER:

2021 ACASI TRUSORT 48 BOTTLE UNSCRAMBLER W/HOPPER, S/S BOTTLE HOPPER, ROTARY FEEDER

CAPPERS:

2021 ACASI TCAP-3-V SPINDLE CAPPER W/UNSCRAMBLER, HOPPER & ELEVATOR

2010 ACCUTEK ASC-6 22-001-000 SPINDLE CAPPER

(2) ACCUTEK 22-001-000 CAPPERS

PRINTERS & BOTTOMLESS CONVEYORS:

(2) 2018 LEIBINGER JET2NEO INKJET PRINTERS

EASTEY DUAL SIDED CASE PRINTER, FLEX OUTFEED CONVEYOR

2016 LEIBINGER JET2NEO INKJET PRINTER W/BOTTOMLESS CONVEYOR

(3) HITACHI PB-260 INKJET PRINTERS W/BOTTOMLESS CONVEYORS

EASTEY CONVEYOR W/DUAL HEAD INKJET PRINTER, OUTFEED CONVEYOR

EASTEY CONVEYOR W/DUAL INKJET PRINTERS, 90' OUTFEED CONVEYOR

(2) KETAN TC-34M BOTTOMLESS CONVEYORS

90 DEGREE OUTFEED CONVEYORS

ASSORTED FLEX CONVEYORS

ACCUMULATION TABLES:

APACKS VSD S/S ACCUMULATION TABLE

(3) E-PAK VSD S/S ACCUMULATION TABLES

(2) INLINE VSD S/S ACCUMULATION TABLES

(2) ACCUTEK VSD S/S ACCUMULATION TABLES

KETAN VSD S/S ACCUMULATION TABLE

COMPRESSORS:

2017 ATLAS COPCO GA18FF AIR COMPRESSOR

2012 ATLAS COPCO GA11FF AIR COMPRESSOR & SEPARATOR

2011 ATLAS COPCO GX5 AIR COMPRESSOR W/BEKO AIR DRYER

ROLLING STOCK:

2013 MERCEDES-BENZ SPRINTER 2500 CARGO VAN, DIESEL, AUTO, ODOMETER READS: 80,858, S/N: WDZPE7CC0D5744513

2012 TOYOTA 8FGCSU20 3,450 LB CAP. SOLID TIRED FORKLIFT, 3-STAGE MAST, SIDE SHIFT, PROPANE, HOUR METER READS: 9,038, S/N: 19594

2013 TOYOTA 8FGCU25 4,500 LB CAP. SOLID TIRED FORKLIFT, 3-STAGE MAST, SIDE SHIFT, PROPANE, HOUR METER READS: 6,966, S/N: 46578

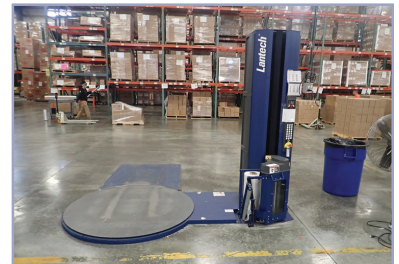
FACTORY CAT MAG-HD ELECTRIC WALK BEHIND FLOOR MACHINE, S/N: 92454



HOBART M-802



BENKO SAHARA 20E24-CS



2016 LANTECH Q300



(10) 6-BURNER GAS RANGES



James G. Murphy Co.

murphyauction.com

425.486.1246



PUBLIC ONLINE AUCTION

ASSORTED EQUIPMENT:

BENKO SAHARA 20E24-CS 3-DOOR PORTABLE HOT DRUM OVEN, S/N: J142117

OVAL SHAPED OVERHEAD GANTRY CRANE, (3) DAYTON 2-TON CHAIN HOISTS, (2) SILVERSON GX25 BATCH MIXERS, 7.5 HP MIXER, PALLET JACKS, DIAPHRAGM PUMP & SUPPORT EQUIPMENT

APPROX. (317) SECTIONS OF INDUSTRIAL PALLET RACKING

LOCOSC LP7620 10,000 LB CAP. PALLET SCALE W/DUAL RAMPS

2016 LANTECH Q300 SEMIAUTOMATIC PALLET WRAPPER W/RAMP

SILVERSON L5M-A BENCH TOP LABRATORY SCALE MIXER

HOBART M-802 80 QT MIXER W/BOWLS & ATTACHMENTS, S/N: 11-449-488

GENERAL SEM120 MIXER

(10) 6-BURNER GAS RANGES, S/S TABLES, IMMERSION BLENDER, SCALES, POTS, CURING RACKS, TRAY RACKS, SHELTER, FLAMMABLE CABINET, FANS, WASH STATIONS, DRUM CARTS, PALLET JACKS, S/S SINKS, KETTLES, DRY GOODS BINS, S/S DRUMS, STANDS, PALLETS, REELS, RACKS, XL DRUM DOLLY, CARTS, DIAPHRAGM PUMPS, SHELVING, GRINDERS, BENDER, SPARE PARTS, HAND TOOLS, WARMERS, DRUM HEATERS, LADDERS, BANDING CARTS, DRUM DOLLIES, MITER SAW, TABLES, CHAIRS, BINS, PACKING STATIONS, CUSTOM BUILT CUBICLE SYSTEM, COMPUTERS, TRANSFORMER, SHED, DRUM LIFTER, HEAT TUNNELS, BENCHES, DUST COLLECTOR, SHELVING PARTS, DIGITAL SCALES, FANS **AND MUCH MORE!**



2013 RIGAO RGNF-30B



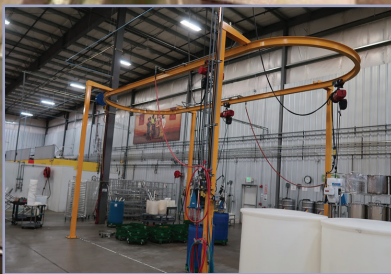
ACASI PI-3100



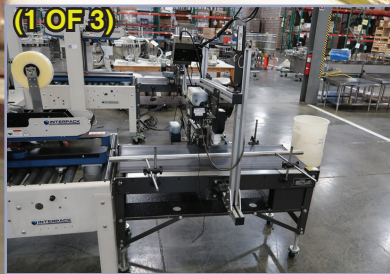
ACCUTEK 02-518-000



2018 PACK LEADER PRO-625W



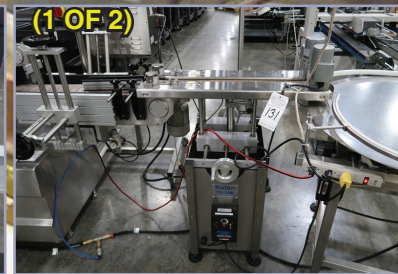
OVERHEAD GANTRY CRANE



EASTEY



E-PAK



KETAN TC-34M



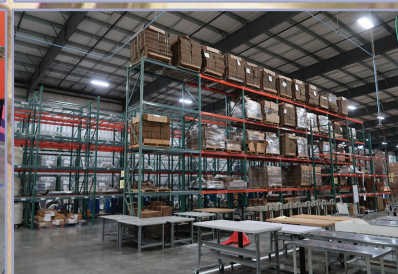
2017 ATLAS COPCO GA18FF



2012 TOYOTA 8FGCSU20



2013 TOYOTA 8FGCU25



(350+) PALLET RACKING

TERMS & CONDITIONS

13% BUYERS PREMIUM ON ALL PURCHASES

PAYMENT: FULL PAYMENT MUST BE MADE BY 5:00 PM WEDNESDAY, MARCH 29.

REMOVAL: ALL ITEMS MUST BE REMOVED NO LATER THAN 4:00 PM THURSDAY, APRIL 6TH

REMOVAL HOURS: 8:00 AM – 4:00 PM MARCH 30TH THRU APRIL 6TH

NO SHIPPING & NO WEEKEND REMOVAL.

WARRANTY DISCLAIMER: ALL SALES ARE FINAL. ALL ITEMS ARE BEING SOLD "AS IS, WHERE IS," WITH ALL FAULTS AND WITHOUT ANY WARRANTIES AS TO MERCHANTABILITY. COMPLETE TERMS AND CONDITIONS OF SALE WILL BE AVAILABLE AT THE TIME OF SALE.

PLEASE SEE AUCTION CATALOG FOR COMPLETE TERMS AND CONDITIONS



1.800.426.3008 - 425.486.1246 - murphyauction.com



UNIFILLER



(1 OF 3)
LABLETTE 24-APS-108



(1 OF 2)
ACCUTEK 22-001



UNIVERSAL



2021 EASTEY
L-BAR SEALER



James G. Murphy Co.

Commercial & Industrial Auctioneers
P.O. Box 1127, Marysville, WA 98270

PRESORTED
FIRST CLASS MAIL
U.S. POSTAGE
PAID
SEATTLE, WA
PERMIT NO. 963



**REGISTER
TO BID @
MURPHYAUCTION.COM**

PUBLIC ONLINE AUCTION

TC Healthcare Bottling
Healthcare Bottler



James G. Murphy Co.
murphyauction.com
425.486.1246



Start Date: 10AM | Wednesday - March 22

End Date: 10AM | Wednesday - March 29

Preview: 8AM to 4PM | Tuesday, March 28

Location: 8109 River Dr. SE, Olympia, WA 98501

Closing Olympia Location



2016 RIGAO RGNF-30B
SEMIAUTOMATIC TUBE FILLER & SEALER

NO MINIMUMS - NO RESERVES



2021 ACASI T-LABELER-W1



(1 OF 5)
INTERPACK USA-2024-BFF



JDA UTS15



(1 OF 2)
ACCUTEK 02-003

FOR MORE INFORMATION GO TO MURPHYAUCTION.COM • PHONE 425.486.1246